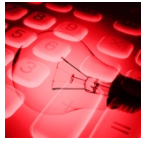


Export CueList for gma3



This is simple tool to Export Cue List (Sequence) to the grandMA3.

Change Cue Number (renumber), Cue Fade or Info from within the application. You can also print your Cue List (Sequence).

You can export cue list from midi file. Midi file you can prepare in almost all music application like Pro Tools, Logic Pro, Cubase, Reaper etc.

In this help we show you how export cue list from Reaper.

Just import to Reaper multimedia file (music or video) you're working on.

Prepare all Cues (Markers in Reaper) – light changes, accents, solos, etc. that you want to use in show.

Export CueList for gma3 will finish all work for you by importing to console **Of Course**:

- Cue List (Sequence)
- Sequence number
- Sequence name
- Page number
- Page name
- Executor number
- Cue Time – for Trigger Time
- Cue Fade

As simple as that!

Don't miss that chance! Do not hesitate and try it completely for free!

Description:

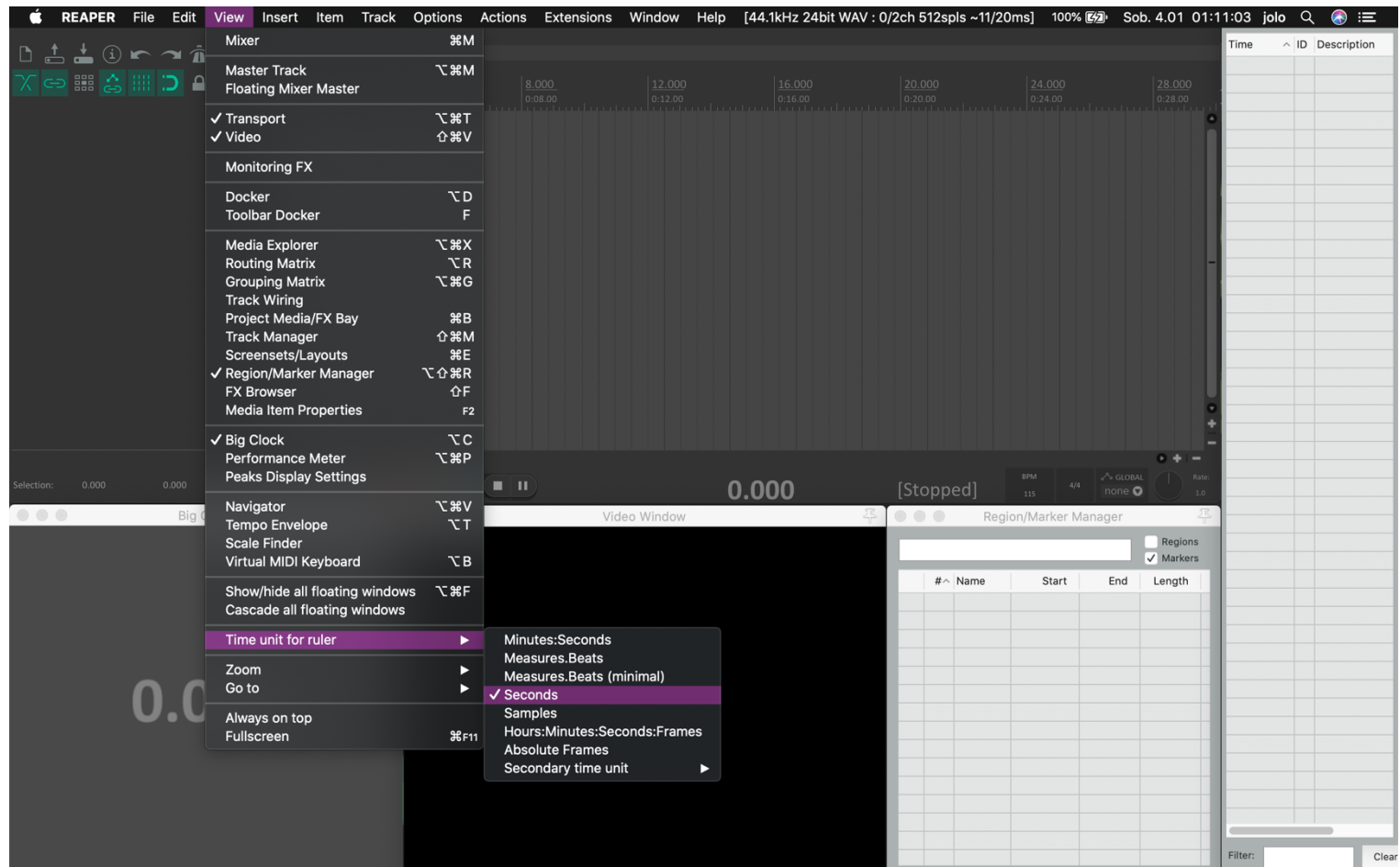
Download and install "Reaper":

<http://www.reaper.fm/download.php>

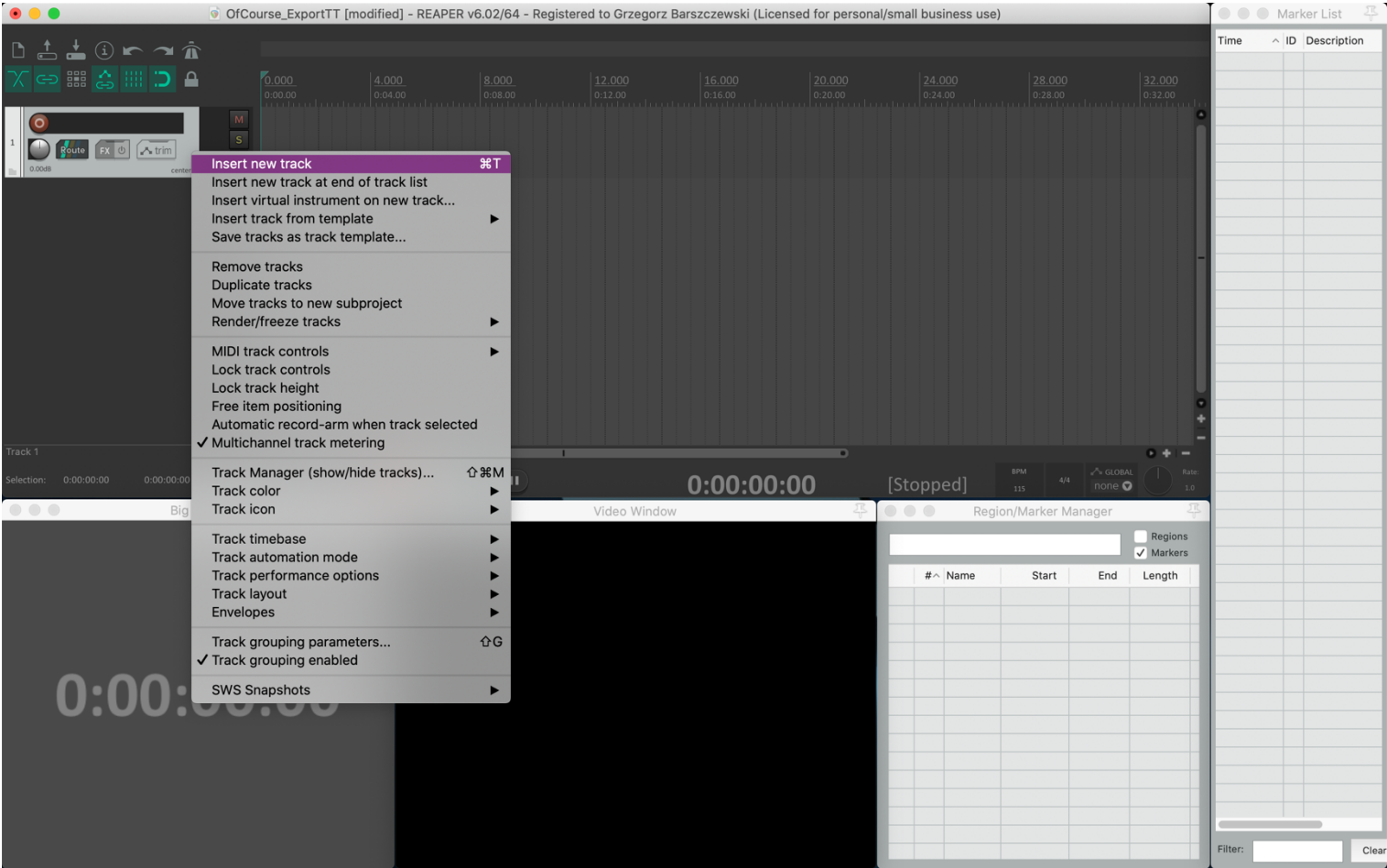
Download and install "SWS Extension" for Reaper:

<http://www.sws-extension.org/>

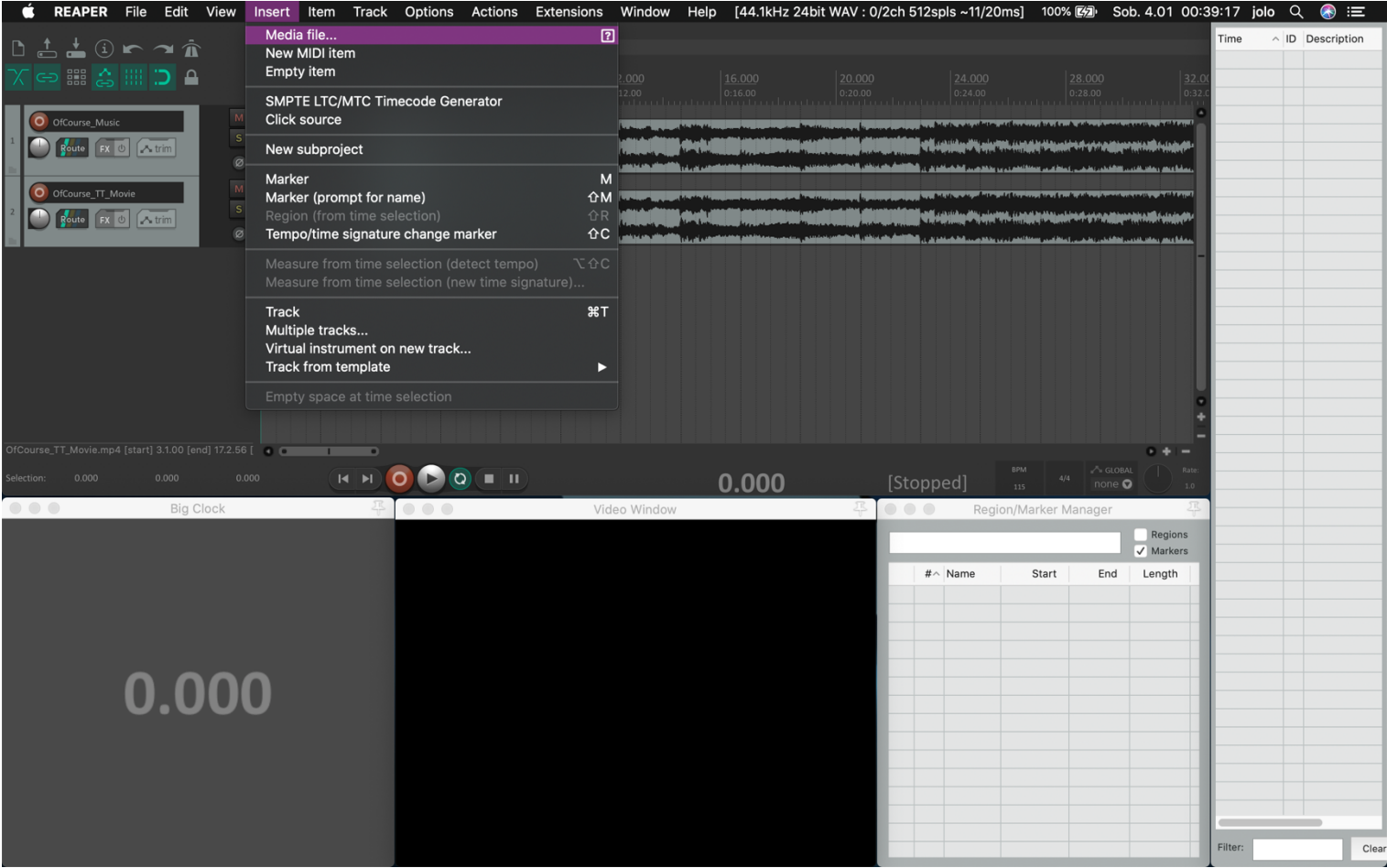
1. Run Reaper.
2. Open View tab and set Time unit for ruler to Seconds.



3. Open Insert tab and insert new Track.



4. Open Insert tab and Import your media file.



5. Create a Cue List (Sequence) use the Markers and give the names for Cues. **Important: don't use comma (",") in cue name.**

The screenshot shows the REAPER v6.02/64 interface. The 'Add Marker' dialog box is open, with the following fields:

- Name: hit
- Position: 6.261
- ID: 3

The background shows the REAPER interface with audio tracks and a marker list on the right. The marker list has the following data:

Time	ID	Description
0.000	1	pre show
4.174	2	start

6. Open Extension tab and open Marker List, click right mouse button and use the tab Convert markers to regions.

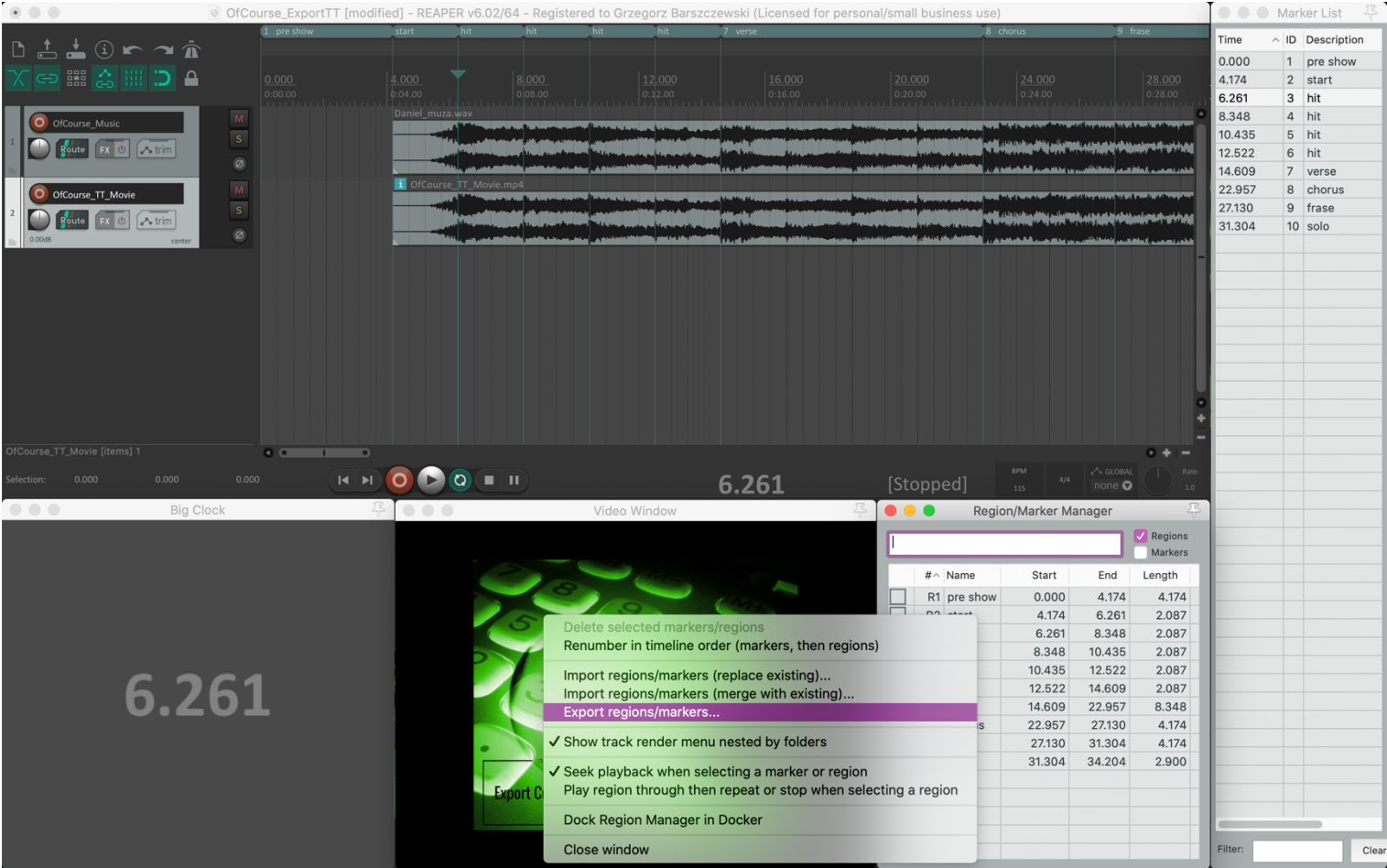
The screenshot shows the REAPER v6.02/64 interface with the 'Marker List' panel open. The marker list has the following data:

Time	ID	Description
0.000	1	pre show
4.174	2	start
6.261	3	hit
8.348	4	hit
10.435	5	hit
12.522	6	hit
14.609	7	verse
22.957	8	chorus
27.130	9	frase
31.304	10	solo

A right-click context menu is open over the marker list, showing the following options:

- Rename
- Set color...
- Save marker set...
- Delete marker set...
- Copy marker set to clipboard
- Paste marker set from clipboard
- Reorder marker IDs
- Reorder region IDs
- Delete selected marker(s)
- Delete all markers
- Delete all regions
- Export formatted marker list to clipboard
- Export formatted marker list to file
- Export format...
- Convert markers to regions**
- Convert regions to markers
- Dock Marker List in Docker
- Close window

7. Save Reaper Project.
8. Open View tab and open Region/Marker Manager.
9. Click right mouse button and use the tab Export region/markers, name the text file (*.csv) and save it.

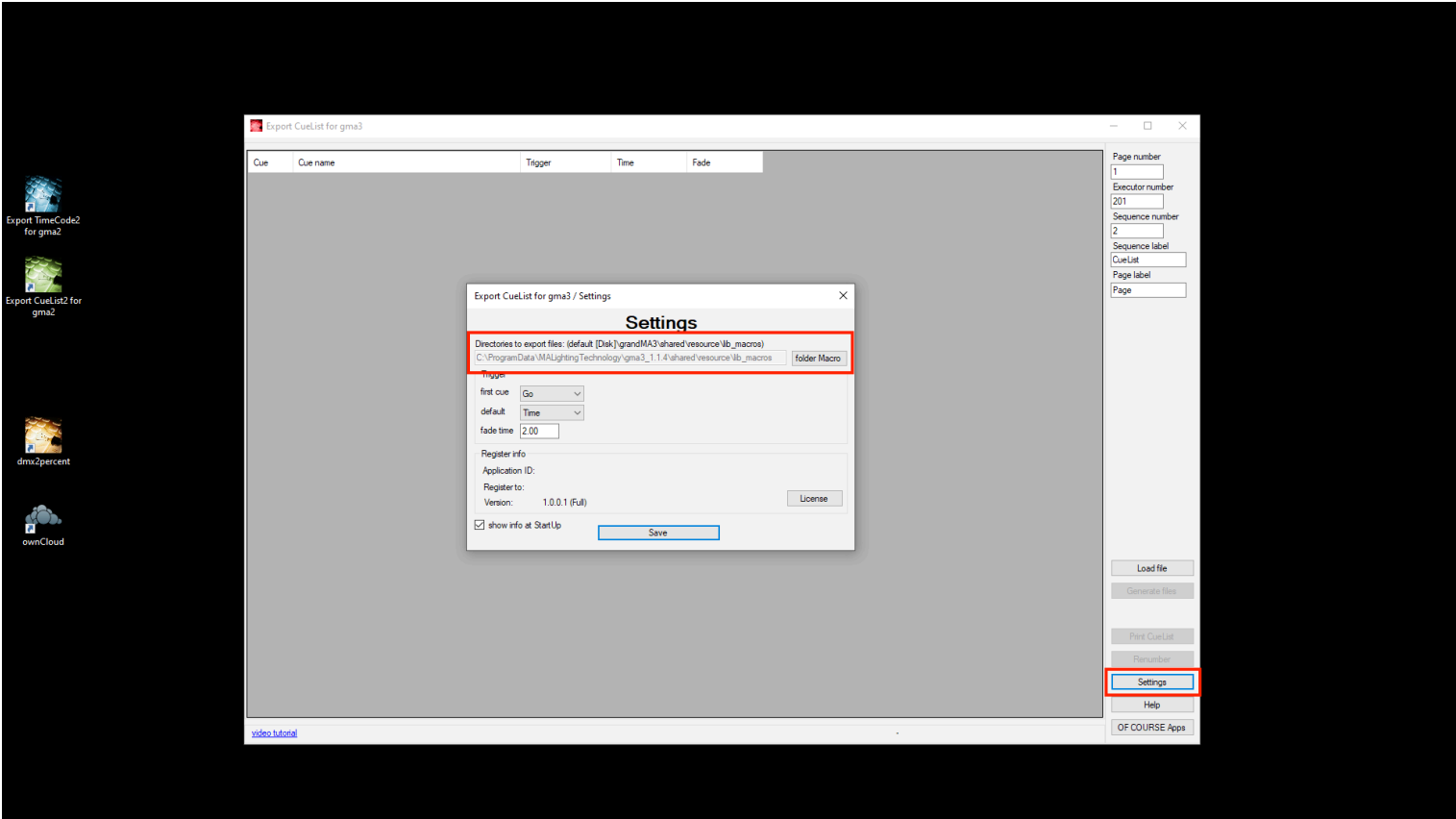


Your Cue List (Sequence) is ready and now. You can export it to the grandMA3 use *Export CueList for gma3*.

Run *Export CueList for gma3*.

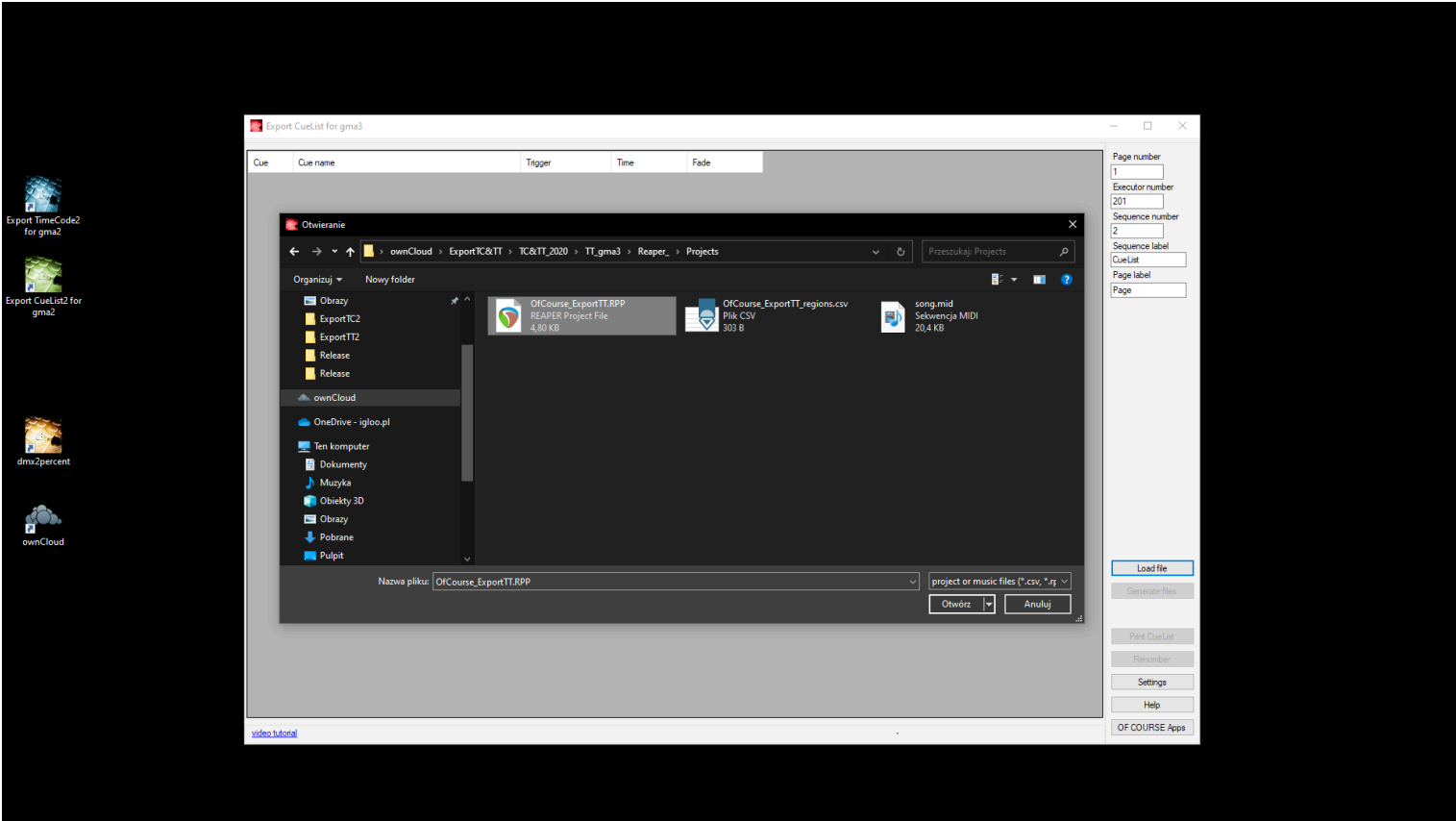
Click tab Settings.

1. Set directories for Macro – grandMA3 OnPC Macro Folder or USB Memory Stick Macro Folder, default is: [Disk]\grandMA3\shared\resource\lib_macros\
2. You can also set default Trigger, Fade.
3. Save settings.

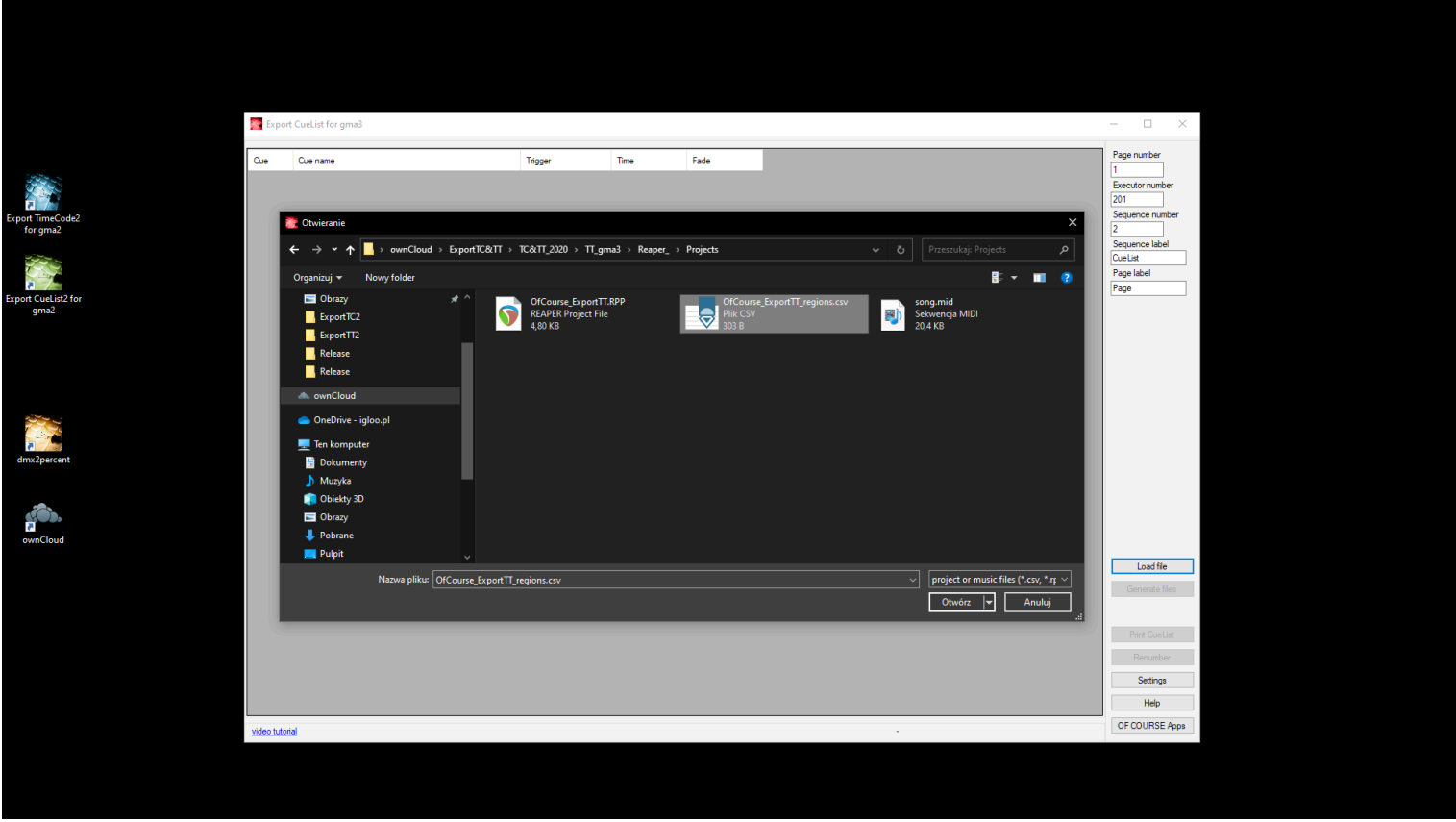


4. Click tab Load file and select your Cue List (Sequence).

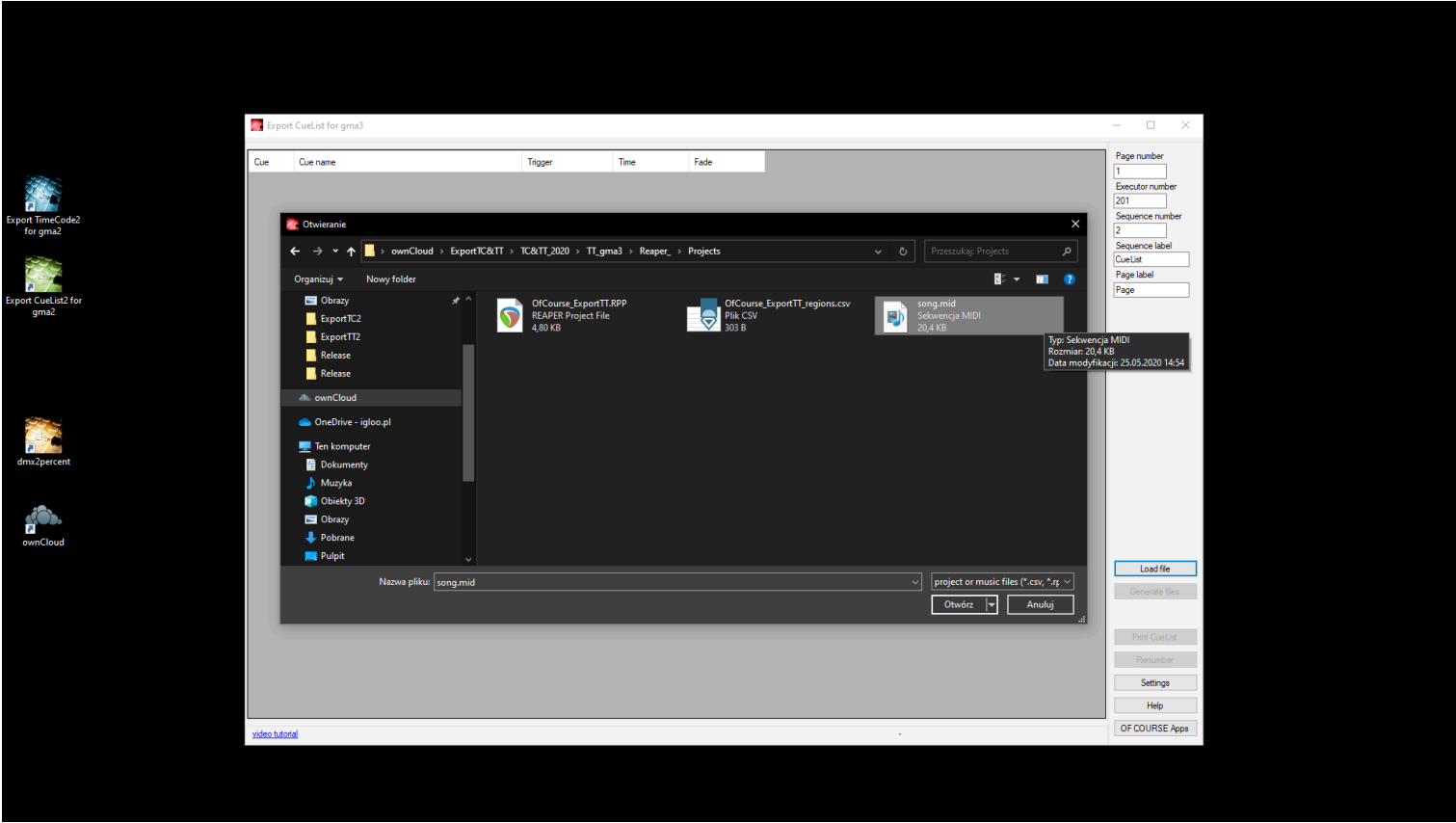
Directly from Reaper Project.



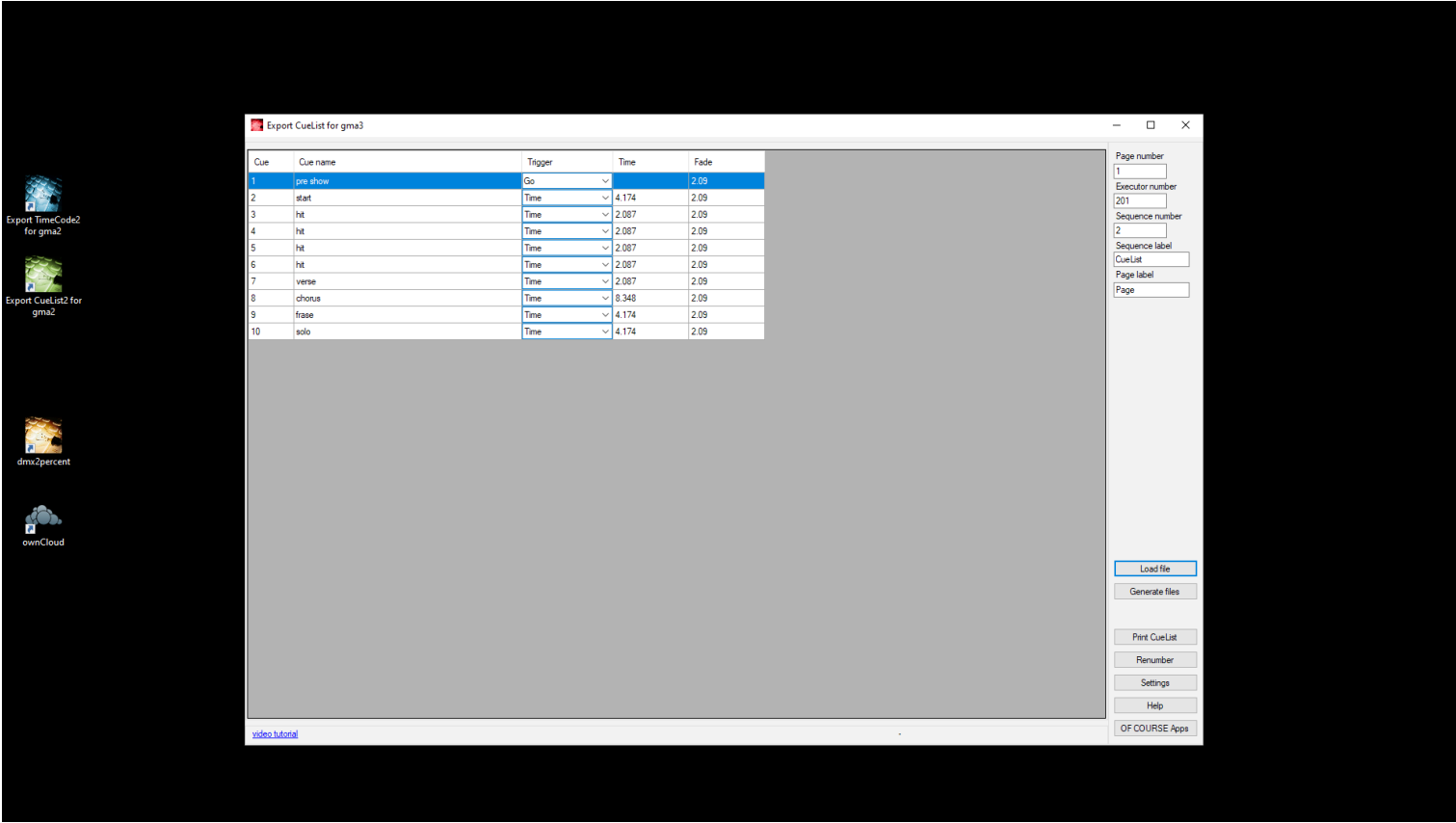
Or, from exported text file from Reaper Project (*.csv).



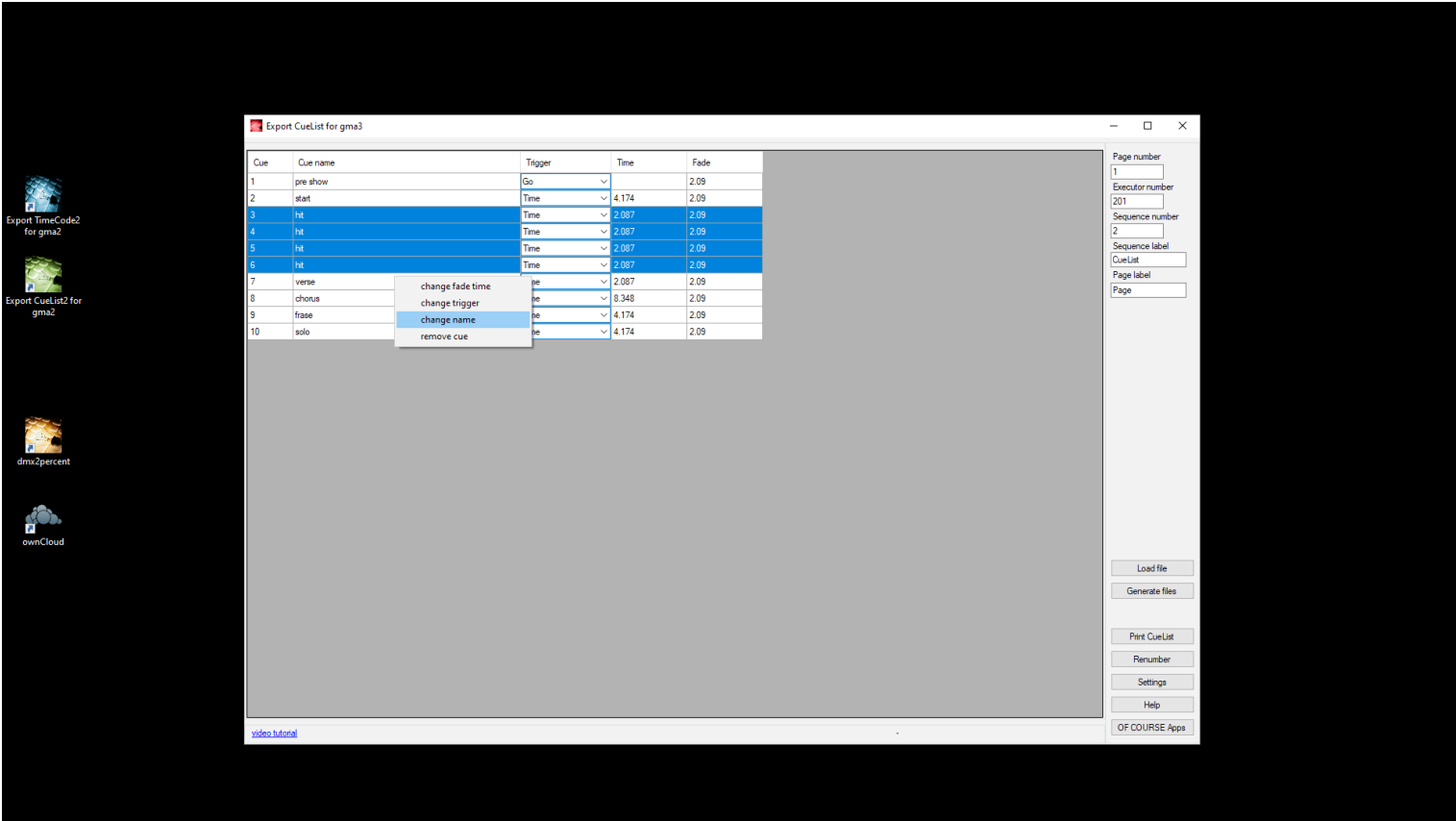
Or from midi file,



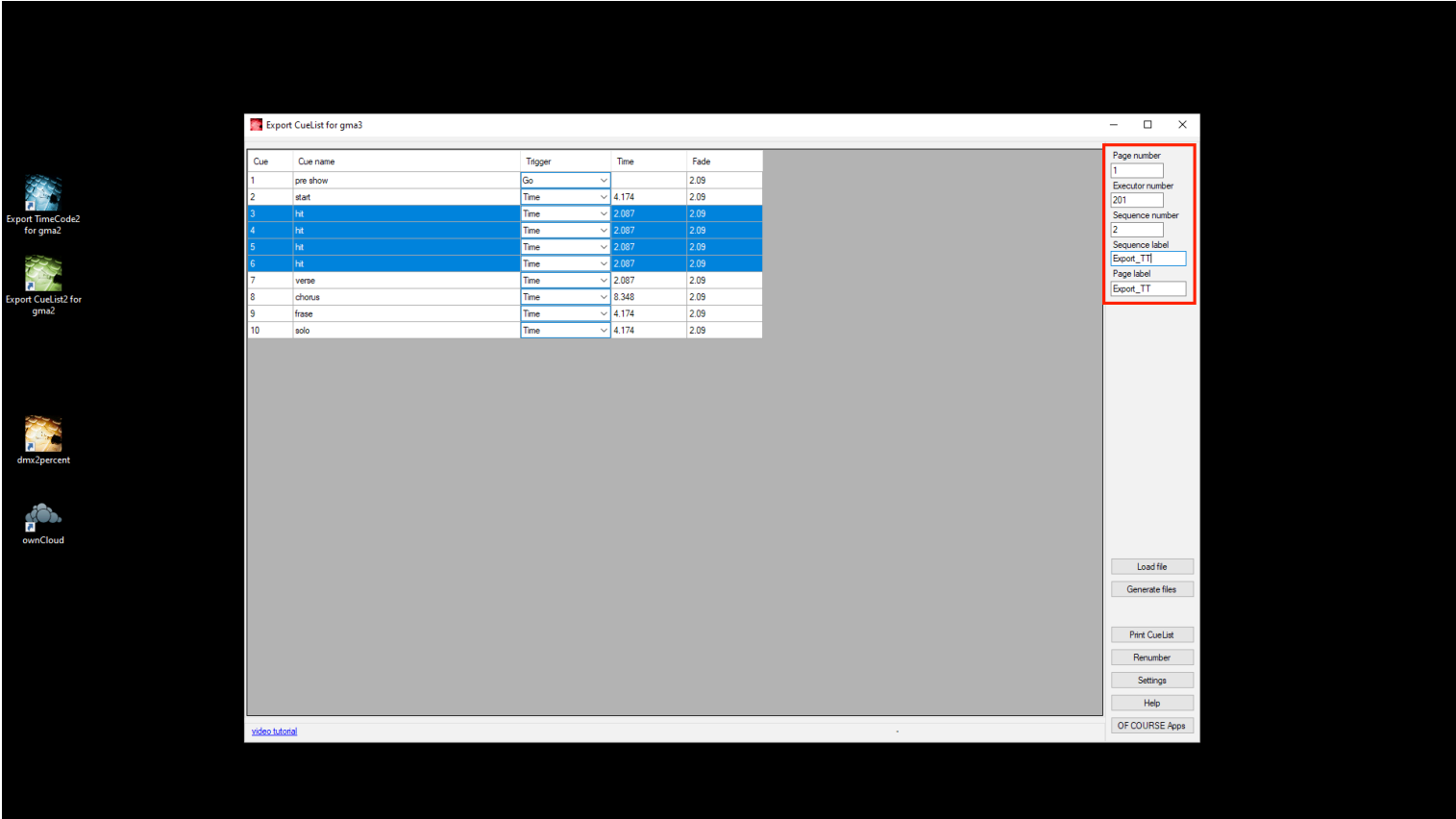
As a result, you will see your Cue List (Sequence).



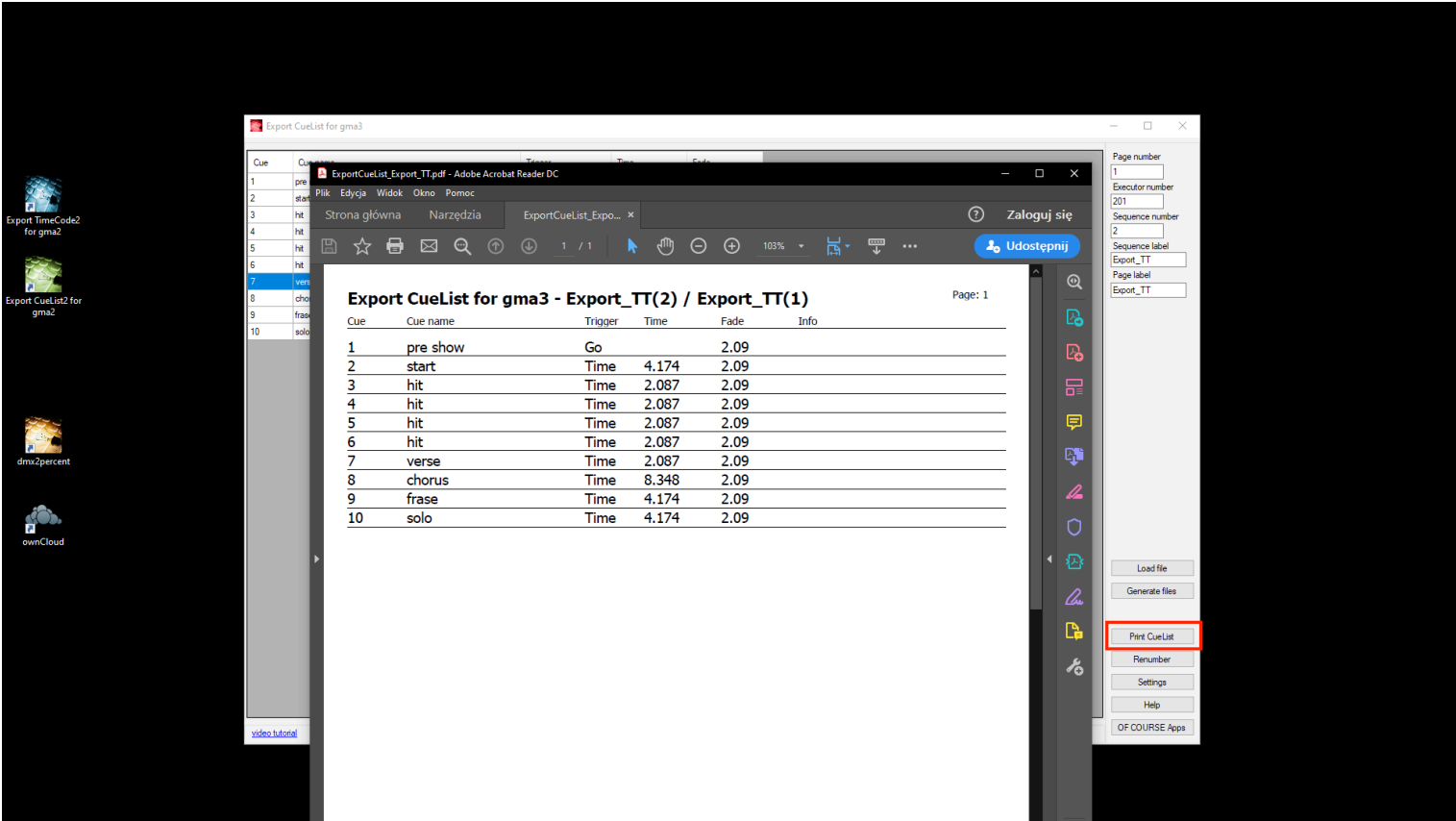
Now you can change the Name, Number, Fade for cues.



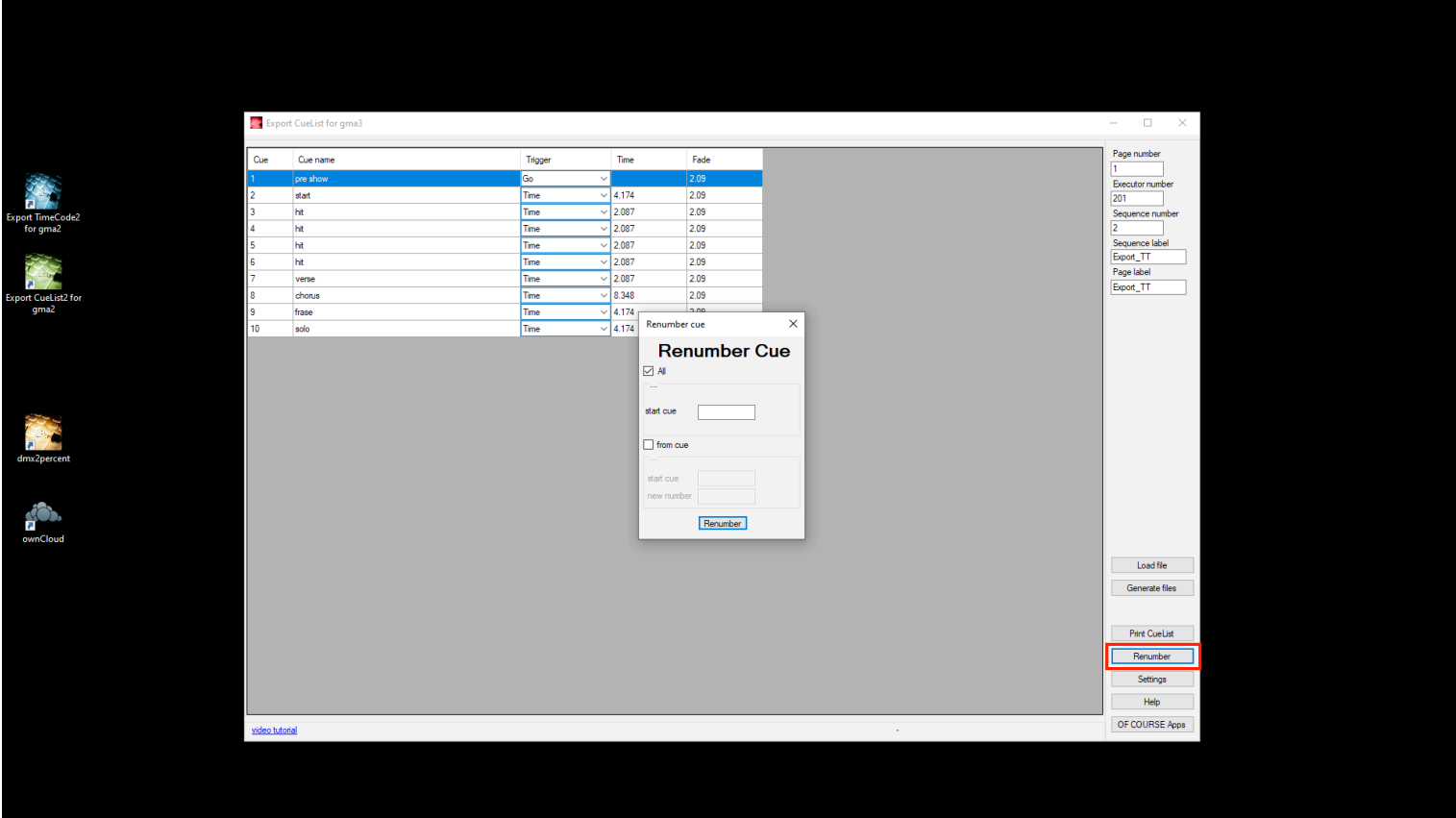
5. Do not forget to set Page number, Executor number, Sequence number, Sequence label, Page label.



You can also print Cue List (Sequence).



And renumber the cue.



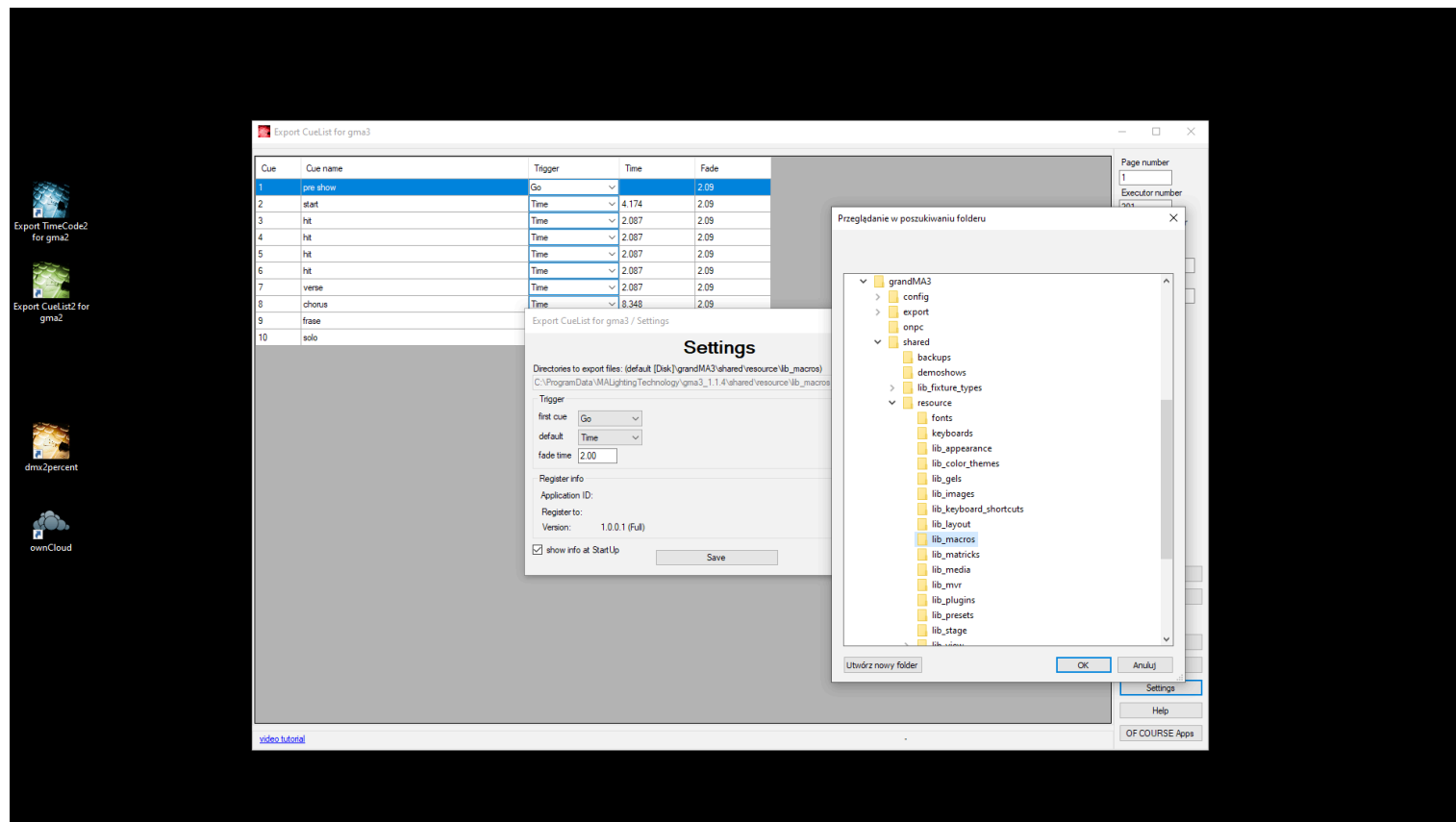
Finally, you have two ways how to export Cue List (Sequence) to grandMA3.

Export by Macro:

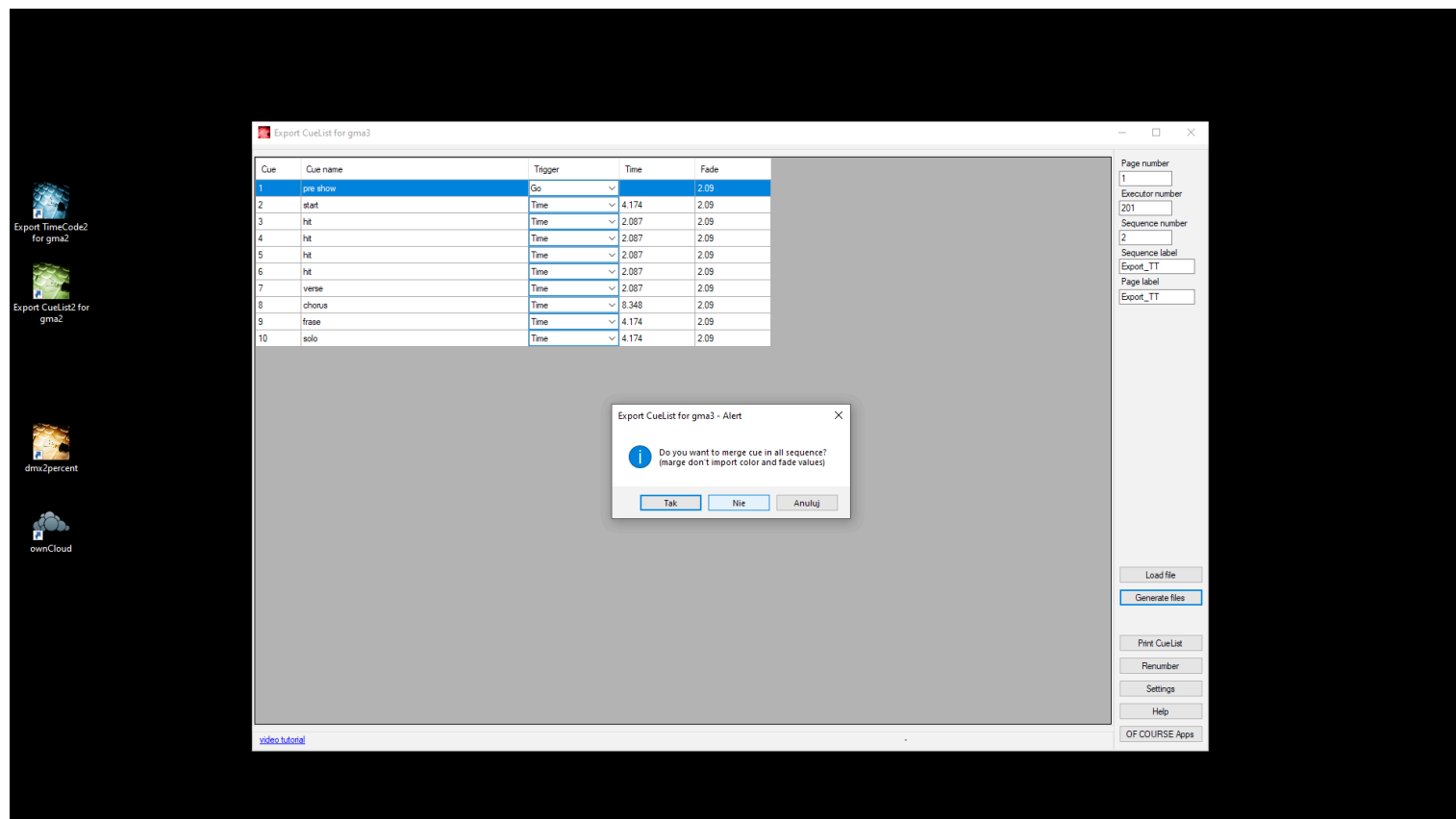
Run **Export CueList for gma3**.

Click tab Settings.

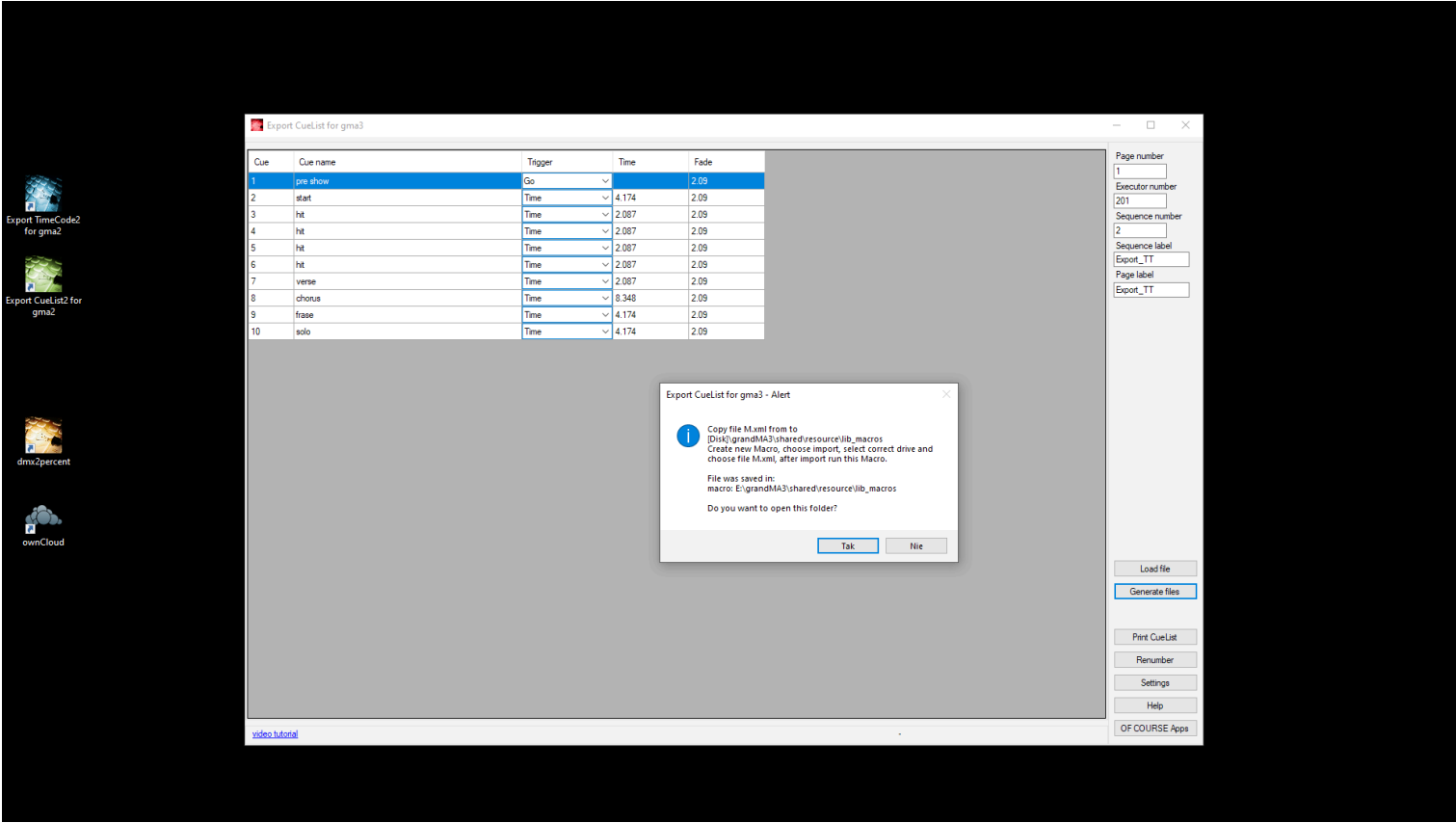
1. Set directories for Macro – grandMA3 OnPC Macro Folder or USB Memory Stick Macro Folder, default is: [Disk]\grandMA3\shared\resource\lib_macros\



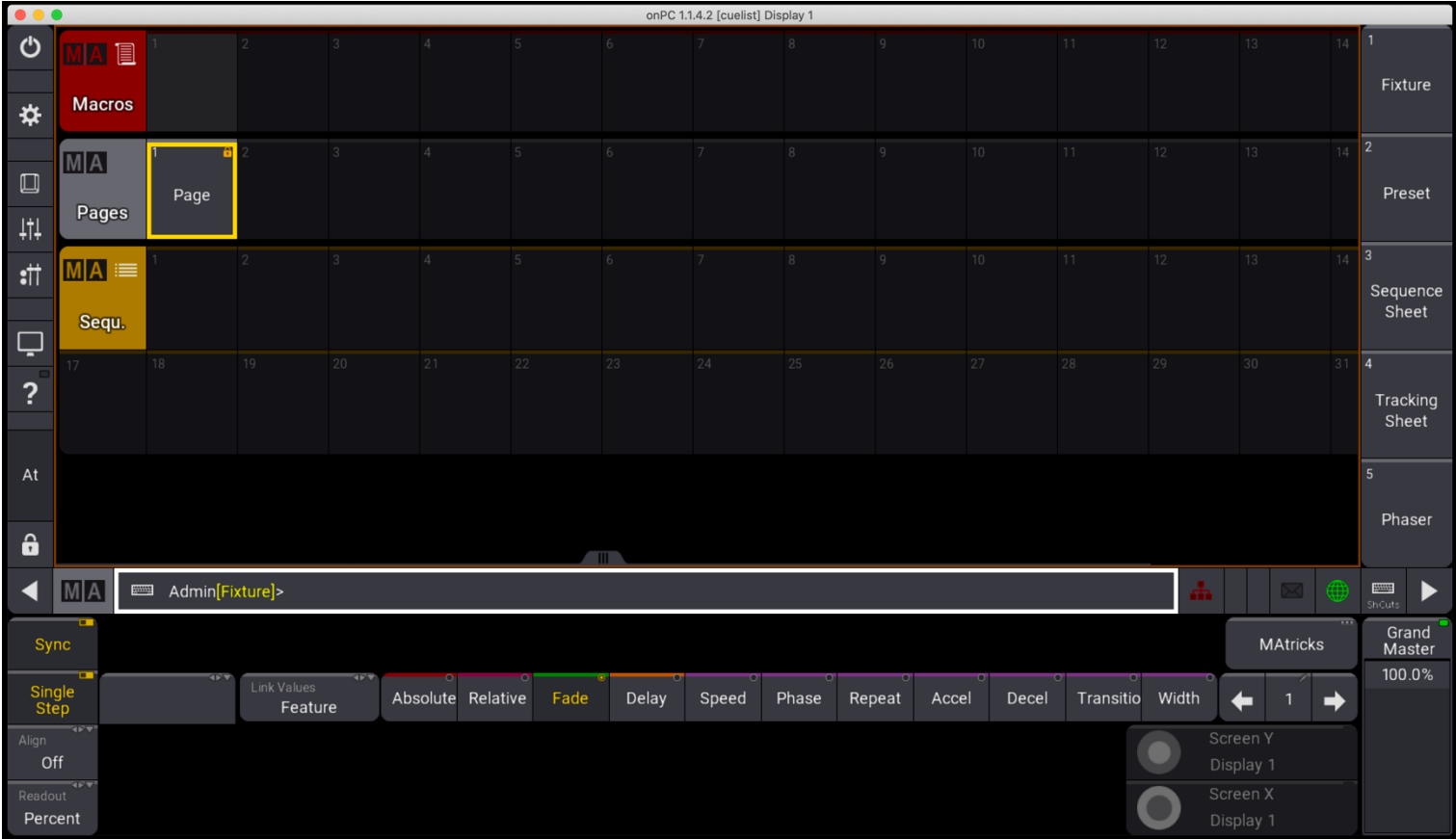
2. Click Generate files, choose what you want: marge or create sequence.



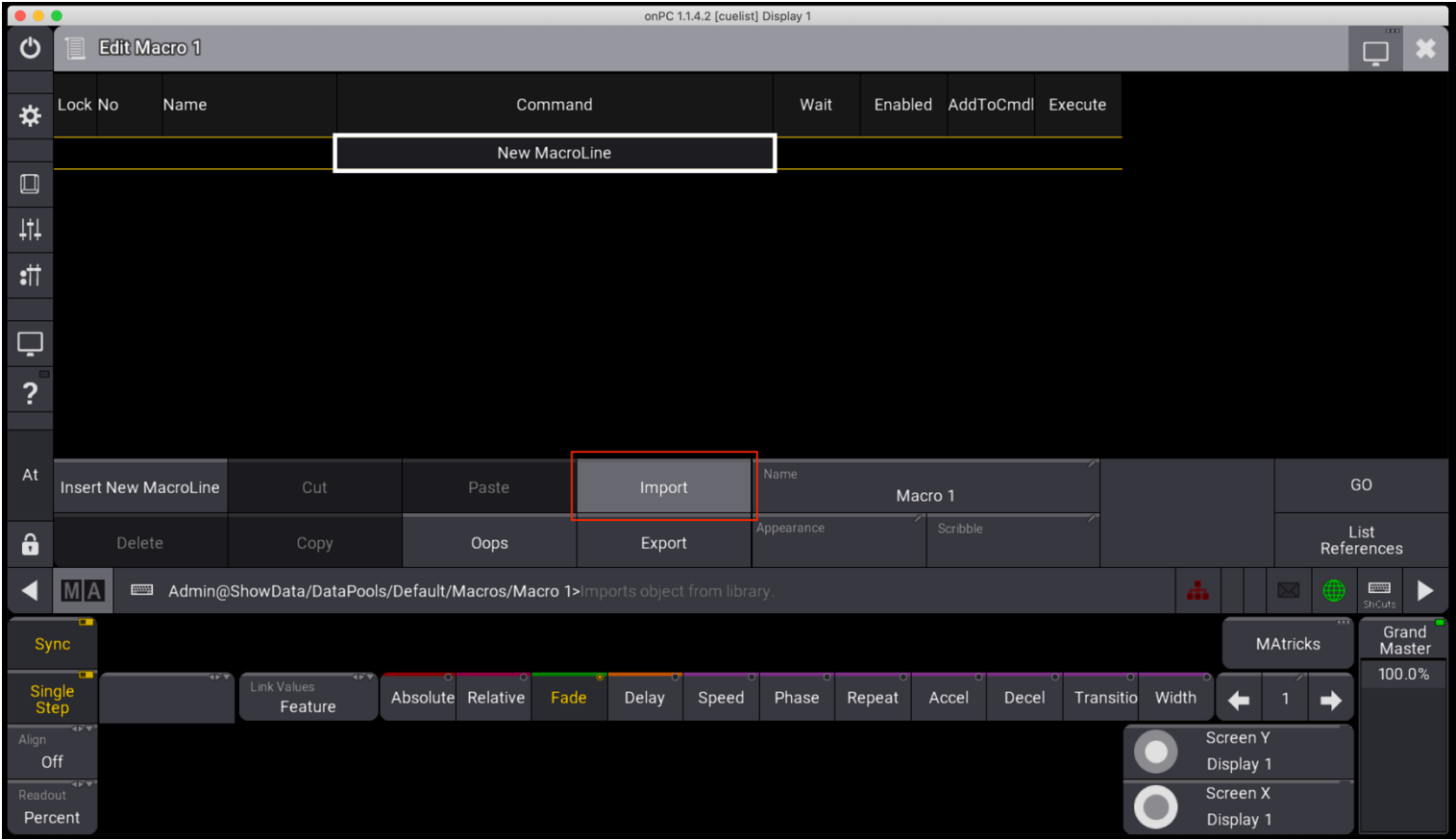
Your Cue List (Sequence) with selected Page, Executor, Trigger, Fade is ready to be imported using a Macro from folder in grandMA3 OnPC or from macro folder on USB Memory Stick!



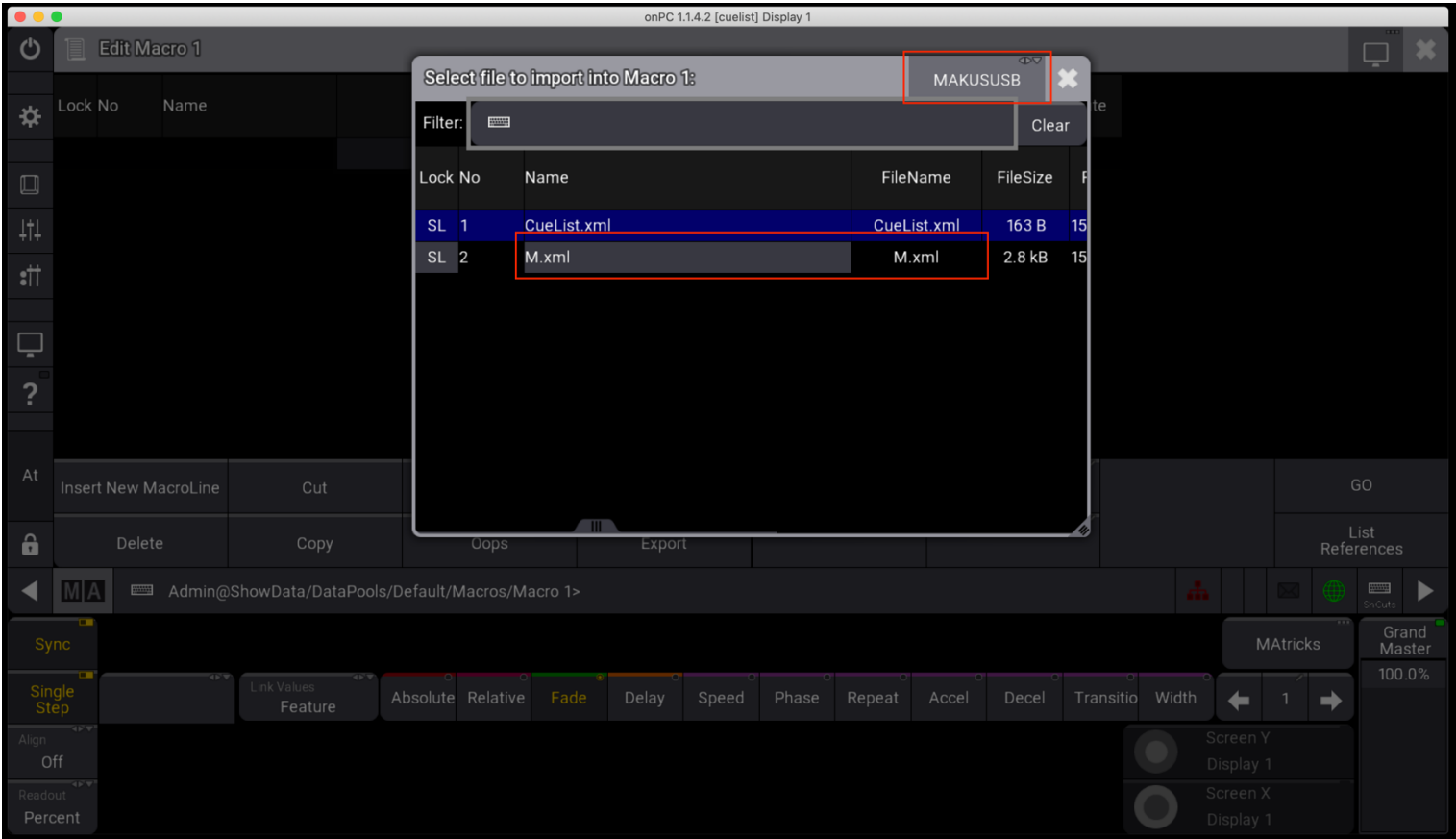
4. Run your show on grandMA3.



5. Create Macro, and choose Import.



6. Choose drive, and select M.xml file.



7. Now run this Macro.

onPC 1.1.4.2 [cuelist] Display 1

Edit Macro 1 'Export_TT'

Lock

No

Name

Command

Wait

Enabled

AddToCmdl

Execute

1

MacroLine 1

Delete Sequence 2 /nc

Follow

Yes

No

Yes

2

MacroLine 2

Store Sequence 2 Cue 1 "pre show" CueFade="2.00"

Follow

Yes

No

Yes

3

MacroLine 3

Store Sequence 2 Cue 2 "start" CueFade="2.00"

Follow

Yes

No

Yes

4

MacroLine 4

Store Sequence 2 Cue 3 "hit" CueFade="2.00"

Follow

Yes

No

Yes

5

MacroLine 5

Set Sequence 2 Cue 3 TrigType=Time

Follow

Yes

No

Yes

6

MacroLine 6

Set Sequence 2 Cue 3 TrigTime="2.087"

Follow

Yes

No

Yes

7

MacroLine 7

Store Sequence 2 Cue 4 "hit" CueFade="2.00"

Follow

Yes

No

Yes

8

MacroLine 8

Set Sequence 2 Cue 4 TrigType=Time

Follow

Yes

No

Yes

9

MacroLine 9

Set Sequence 2 Cue 4 TrigTime="2.087"

Follow

Yes

No

Yes

10

MacroLine 10

Store Sequence 2 Cue 5 "hit" CueFade="2.00"

Follow

Yes

No

Yes

At

Insert New MacroLine

Cut

Paste

Import

Name

Macro 1 'Export_TT'

Delete

Copy

Oops

Export

Appearance

Scribble

GO

List References

Admin@ShowData/DataPools/Default/Macros/Macro 1>

Sync

Single Step

Align

Off

Readout

Percent

Link Values

Feature

Absolute

Relative

Fade

Delay

Speed

Phase

Repeat

Accel

Decel

Transitio

Width

←

1

→

Screen Y

Display 1

Screen X

Display 1

MAtricks

Grand Master

100.0%

Your Cue List (Sequence) with selected Page, Executor, Trigger, Fade is already in show on grandMA3!

onPC 1.1.4.2 [cuelist] Display 1

Macros

Export_TT

Pages

Page

Export_TT

Sequ.

Export_TT

1

2

3

4

5

6

7

8

9

10

11

12

13

14

1

Fixture

17

18

19

20

21

22

23

24

25

26

27

28

29

30

31

2

Preset

3

Sequence Sheet

4

Tracking Sheet

5

Phaser

Admin[Fixture]>

Sync

Single Step

Align

Off

Readout

Percent

Link Values

Feature

Absolute

Relative

Fade

Delay

Speed

Phase

Repeat

Accel

Decel

Transitio

Width

←

1

→

Screen Y

Display 1

Screen X

Display 1

MAtricks

Grand Master

100.0%

v1.0.0.1