

Export TimeCode for gma3



This is simple tool to Export Cue List (Sequence) with Timecode to the grandMA3, with many tracks.
Change Cue Number (renumber), Cue Fade from within the application. You can also print your Cue List (Sequence).

Now you can export cue list and timecode from midi file. Midi file you can prepare in almost all music application like Pro Tools, Logic Pro, Cubase, Reaper etc.

In this help we show you how export cue list and timecode from Reaper.
Just import to Reaper multimedia file (music or video) you're working on.
Prepare all Cues (Markers in Reaper) – light changes, accents, solos, etc. that you want to use in show.

Export TimeCode for gma3 will finish all work for you by importing to console **Of Course**:

- Timecode number
- Timecode name
- FPS
- Page number
- Page name
- More than one Cue List (Sequence)
- More than one Track in Timecode
- Sequence number
- Sequence name
- Executor number
- Cue Fade

As simple as that!
Don't miss that chance! Do not hesitate and try it completely for free!

Description:

Download and install "Reaper":

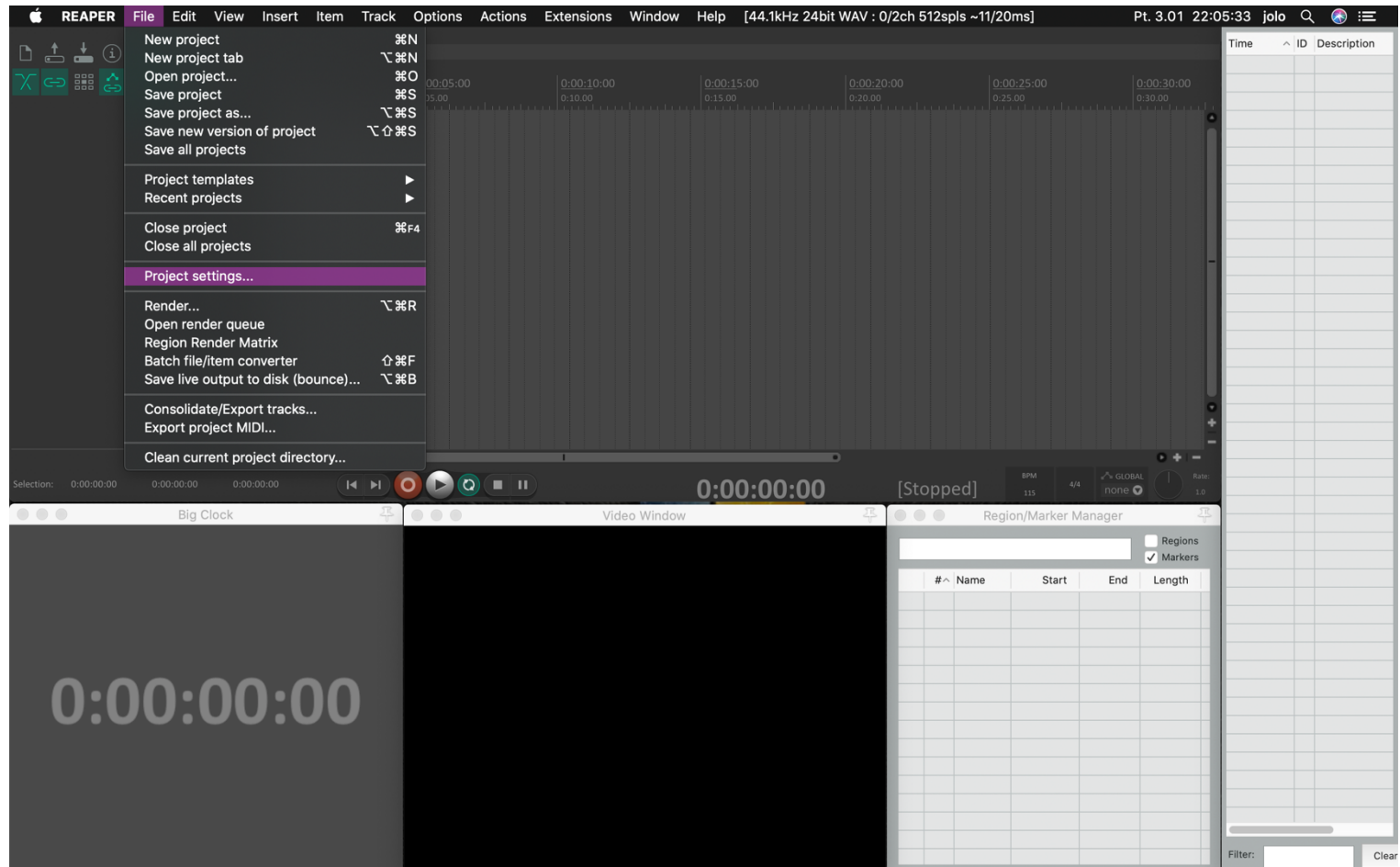
<http://www.reaper.fm/download.php>

Download and install "SWS Extension" for Reaper:

<http://www.sws-extension.org/>

Run Reaper.

1. Open File tab and Project settings.



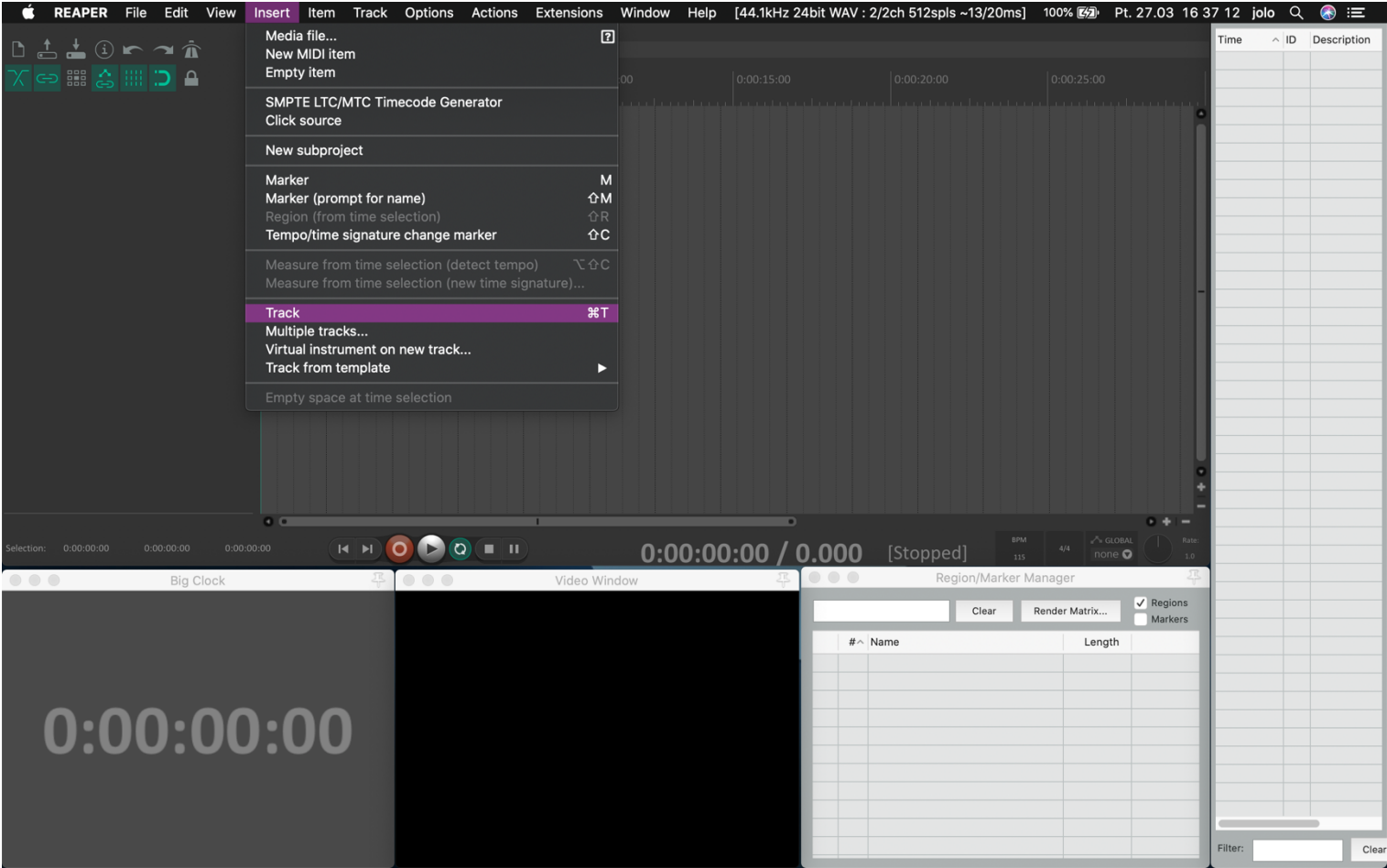
The screenshot shows the Reaper DAW interface. The main window displays a timeline with a large '0:00:00:00' display at the bottom left. The 'Project Settings' dialog box is open, showing the 'Video' tab. The settings include:

- Frame rate: 30
- Preferred video size: 23.976
- Video item visibility: 25
- Video color space: 29.97DF
- Always resample to preferred video size: ☐
- Always resample preferred video size: ☐
- Use high quality resampling: ☒
- Preserve aspect ratio when resizing: ☒

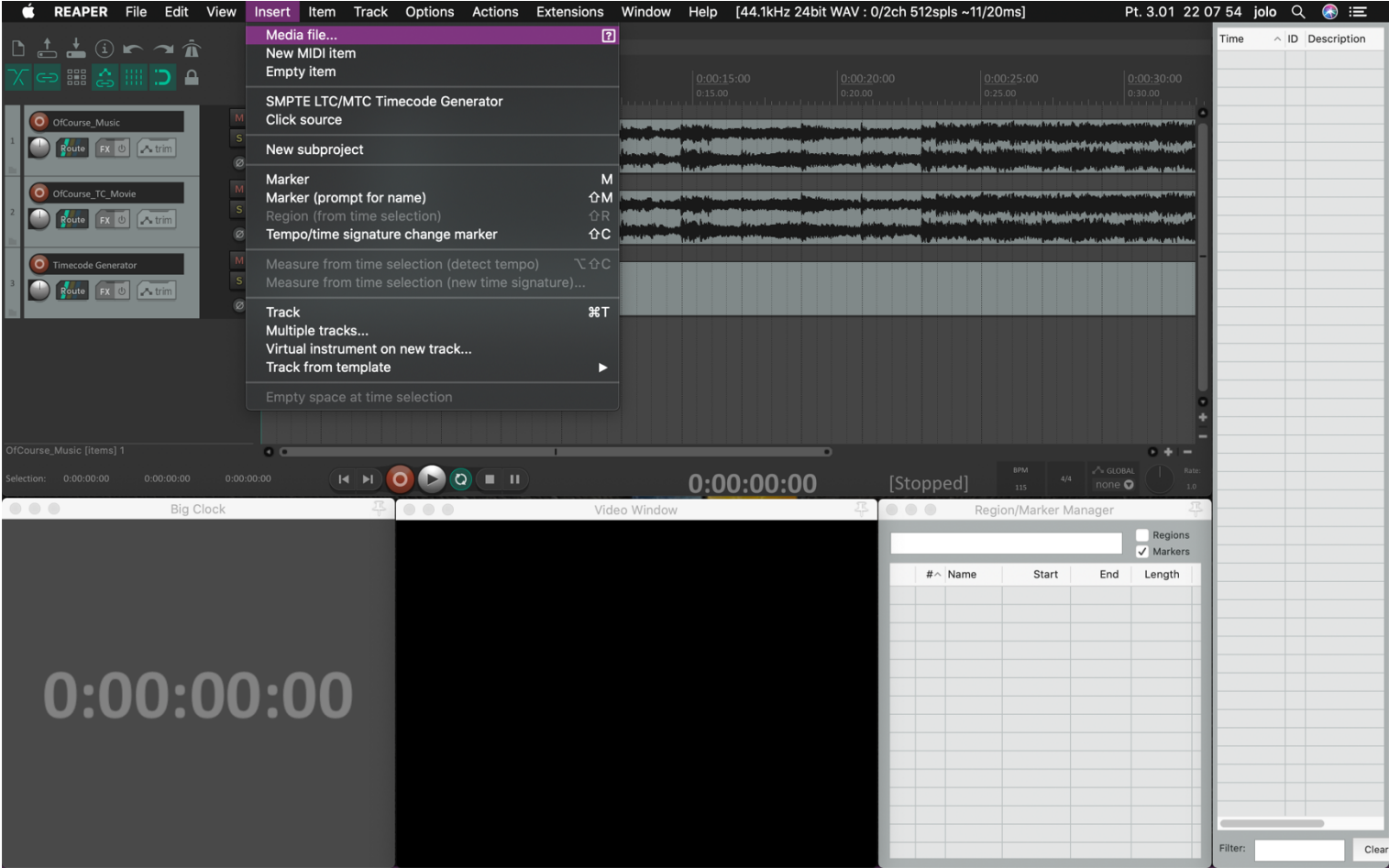
The background shows the main timeline and a large '0:00:00:00' display. The 'Region/Marker Manager' panel is visible on the right side of the interface.

The screenshot shows the REAPER software interface. The top menu bar includes Apple logo, REAPER, File, Edit, View, Insert, Item, Track, Options, Actions, Extensions, Window, Help, and system status information like [44.1kHz 24bit WAV : 0/2ch 512spl ~11/20ms], 100%, jolo, and a search icon. The 'View' menu is currently open, displaying various window management options such as Mixer, Master Track, Transport, Video, Monitoring FX, Docker, Media Explorer, Routing Matrix, Grouping Matrix, Track Wiring, Project Media/FX Bay, Track Manager, Screensets/Layouts, Region/Marker Manager, FX Browser, Media Item Properties, Big Clock, Performance Meter, Peaks Display Settings, Navigator, Tempo Envelope, Scale Finder, Virtual MIDI Keyboard, Show/hide all floating windows, Cascade all floating windows, Time unit for ruler, Zoom, Go to, Always on top, and Fullscreen. A submenu for 'Time unit for ruler' is also visible, listing units like Minutes:Seconds, Measures.Beats, Seconds, Samples, Hours:Minutes:Seconds:Frames (which is selected), Absolute Frames, and Secondary time unit. The background shows a dark-themed DAW workspace with tracks and a timeline. On the right side, there are panels for 'Region/Marker Manager' and a table with columns '#', 'Name', 'Start', 'End', and 'Length'. At the bottom right, there's a 'Filter:' input field and a 'Clear' button.

4. Open Insert tab and insert Track.



5. Open Insert tab and Import your media file.



6. Create a Cue List (Sequence) use the Markers and give the names for Cues. **Important: don't use comma (",") in cue name.**

OfCourse_ExportTC [modified] - REAPER v6.02/64 - Registered to Grzegorz Barszczewski (Licensed for personal/small business use)

1 pre show 2 start

0:00:00:00 0:00:05:00 0:00:10:00 0:00:15:00 0:00:20:00 0:00:25:00 0:00:30:00

0:00:00 0:05:00 0:10:00 0:15:00 0:20:00 0:25:00 0:30:00

OfCourse_Music

OfCourse_TC_Movie

Timecode Generator

0:00:06:07

[Stopped]

BPM 115 4/4 GLOBAL NONE

Rate 1.0

Big Clock

Video Window

Region/Marker Manager

#	Name	Start	End	Length
M1	pre show	0:00:00:00	-	-
M2	start	0:00:04:05	-	-

Filter: Clear

7. Save Reaper Project.

8. Open View tab and open Region/Marker Manager.
9. Click right mouse button and use the tab Export region/markers, name the text file (*.csv) and save it.

OfCourse_ExportTC [modified] - REAPER v6.02/64 - Registered to Grzegorz Barszczewski (Licensed for personal/small business use)

1 pre show 2 start 3 hit 4 hit 5 hit 6 hit 7 verse 8 chorus 9 frase 10 solo

0:00:00:00 0:00:05:00 0:00:10:00 0:00:15:00 0:00:20:00 0:00:25:00 0:00:30:00

0:00:00 0:05:00 0:10:00 0:15:00 0:20:00 0:25:00 0:30:00

OfCourse_Music

OfCourse_TC_Movie

Timecode Generator

0:00:31:09

[Stopped]

BPM 115 4/4 GLOBAL NONE

Rate 1.0

Big Clock

Video Window

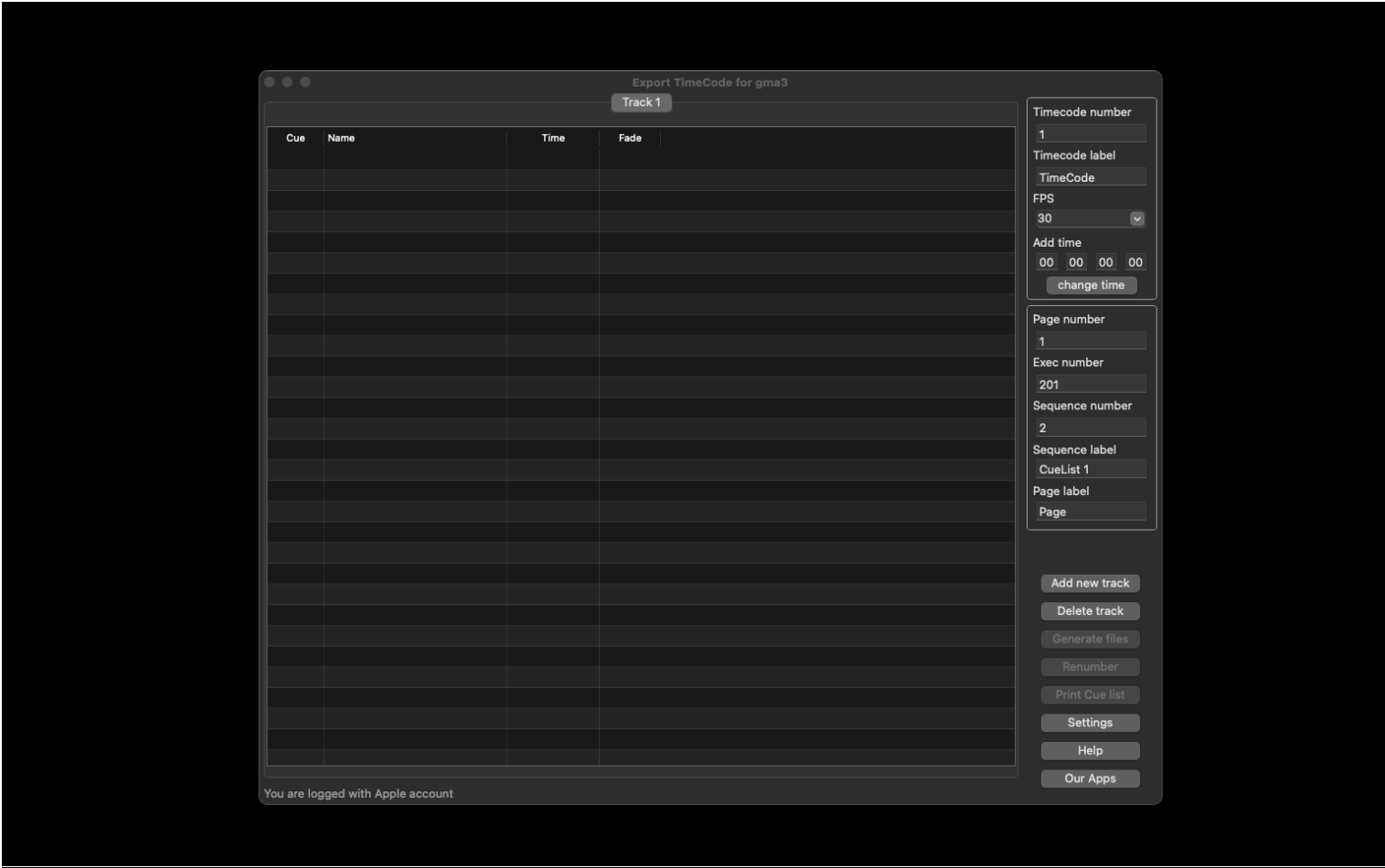
Region/Marker Manager

#	Name	Start	End	Length
M1	pre show	0:00:00:00	-	-
M2	start	0:00:04:05	-	-
M3	hit	0:00:06:07	-	-
M4	hit	0:00:08:10	-	-
M5	hit	0:00:10:13	-	-
M6	hit	0:00:12:15	-	-
M7	verse	0:00:14:18	-	-
M8	chorus	0:00:22:28	-	-
M9	frase	0:00:27:03	-	-
M10	solo	0:00:31:09	-	-

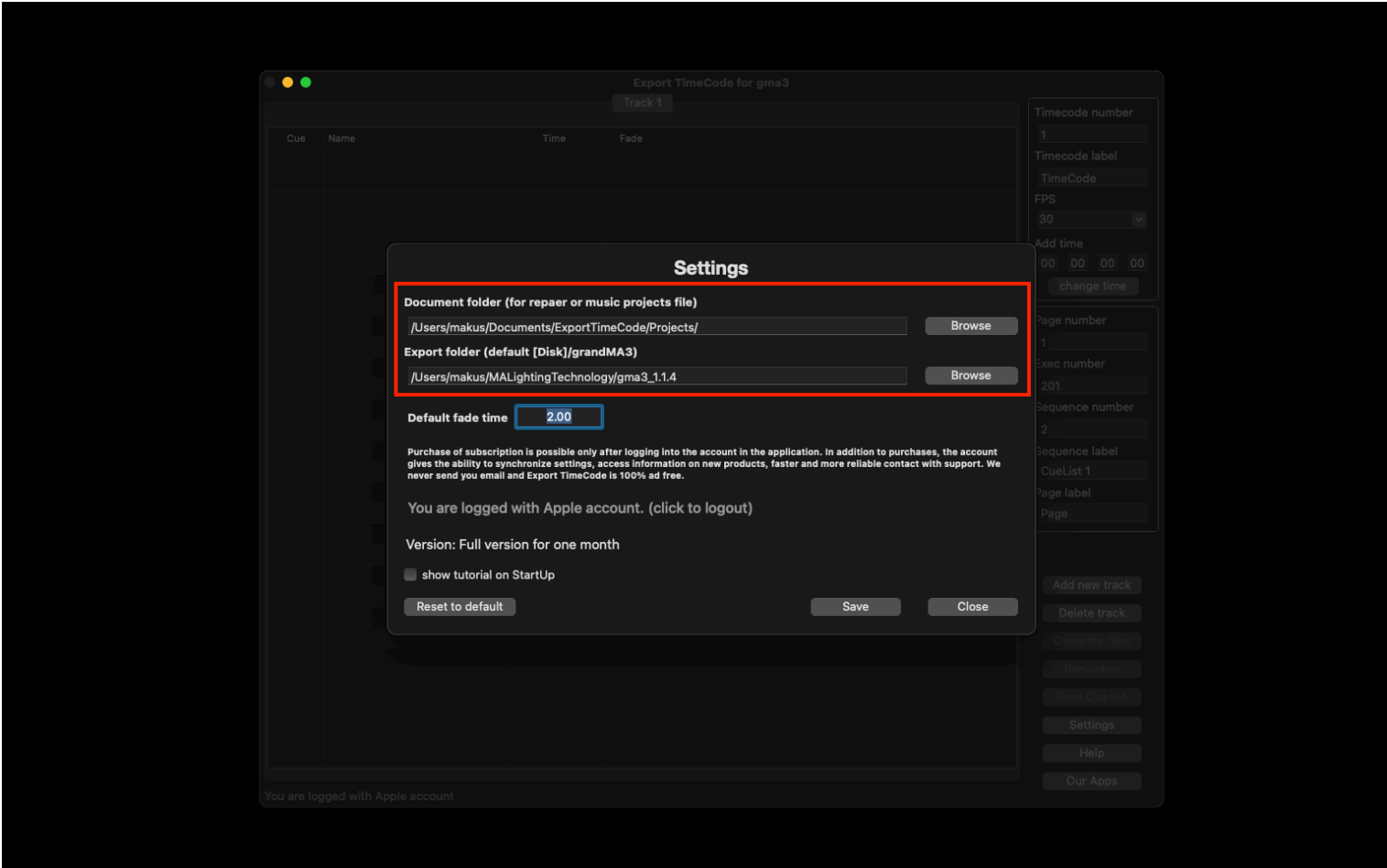
Filter: Clear

- Delete selected markers/regions
- Renumber in timeline order (markers, then regions)
- Import regions/markers (replace existing)...
- Import regions/markers (merge with existing)...
- Export regions/markers...
- ✓ Show track render menu nested by folders
- ✓ Seek playback when selecting a marker or region
- Play region through then repeat or stop when selecting a region
- Dock Region Manager in Docker
- Close window

Your Cue List (Sequence) with Timecode is ready and now. You can export it to the grandMA3 use *Export TimeCode for gma3*.
Run *Export TimeCode for gma3*.

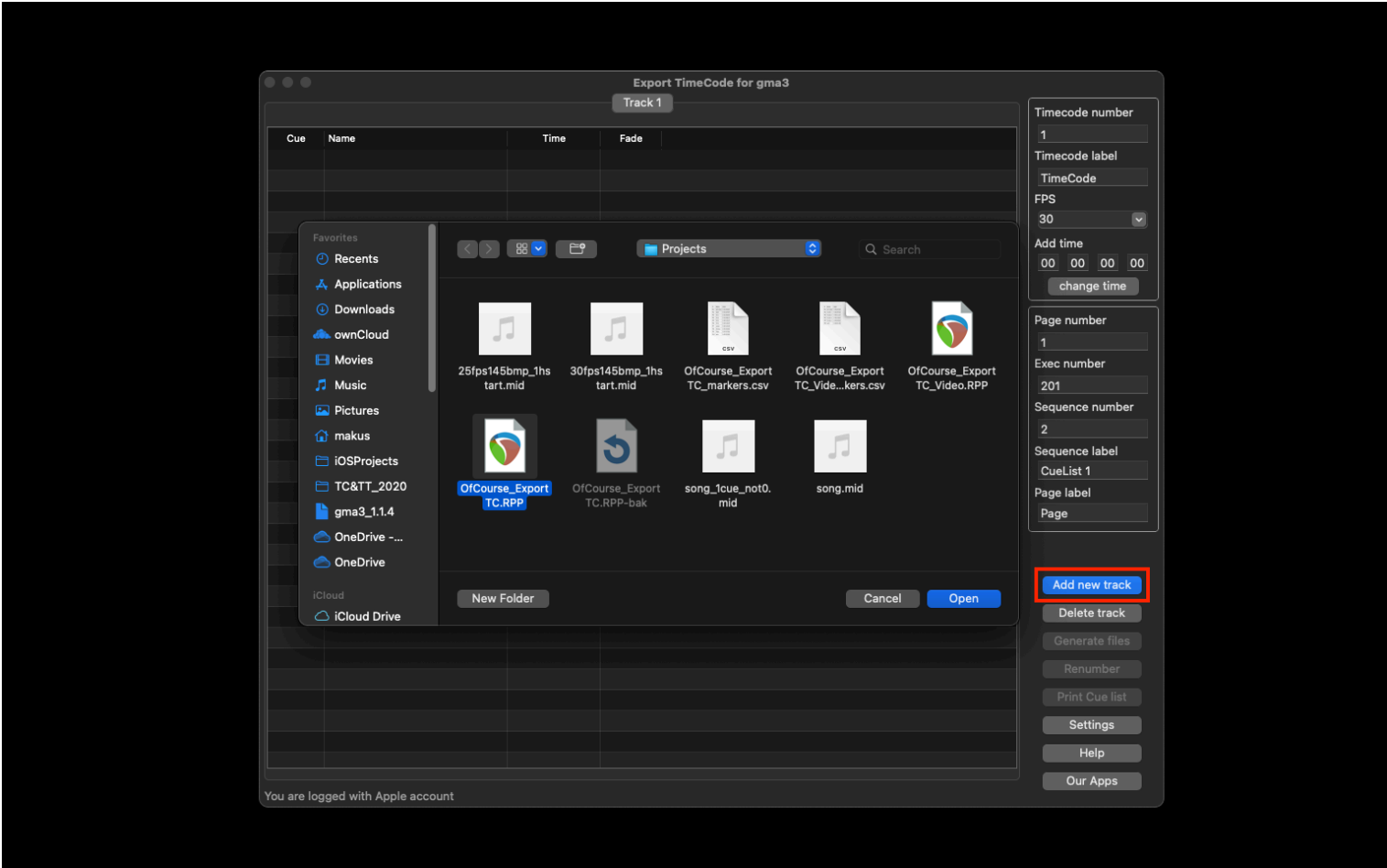


1. Click tab Settings.
2. Set directories for Timecode and Macro – grandMA3 onPC Folders or USB Memory Stick Folders.
3. Set directories for Projects file, default is yours document folder.
4. You can also set default Fade for Cues.
5. Save settings.

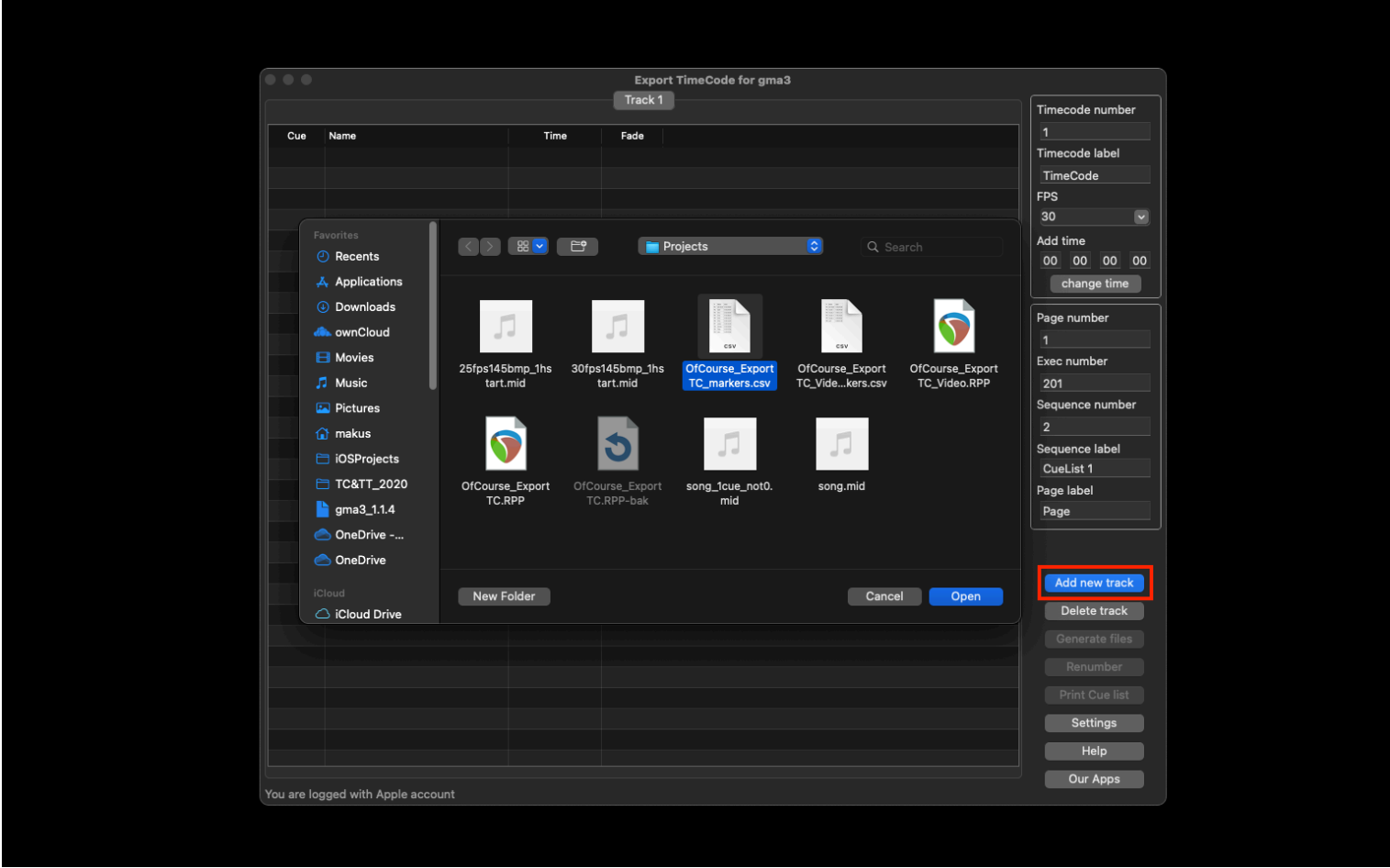


6. Click tab 'Add new track' and select your Cue List (Sequence).

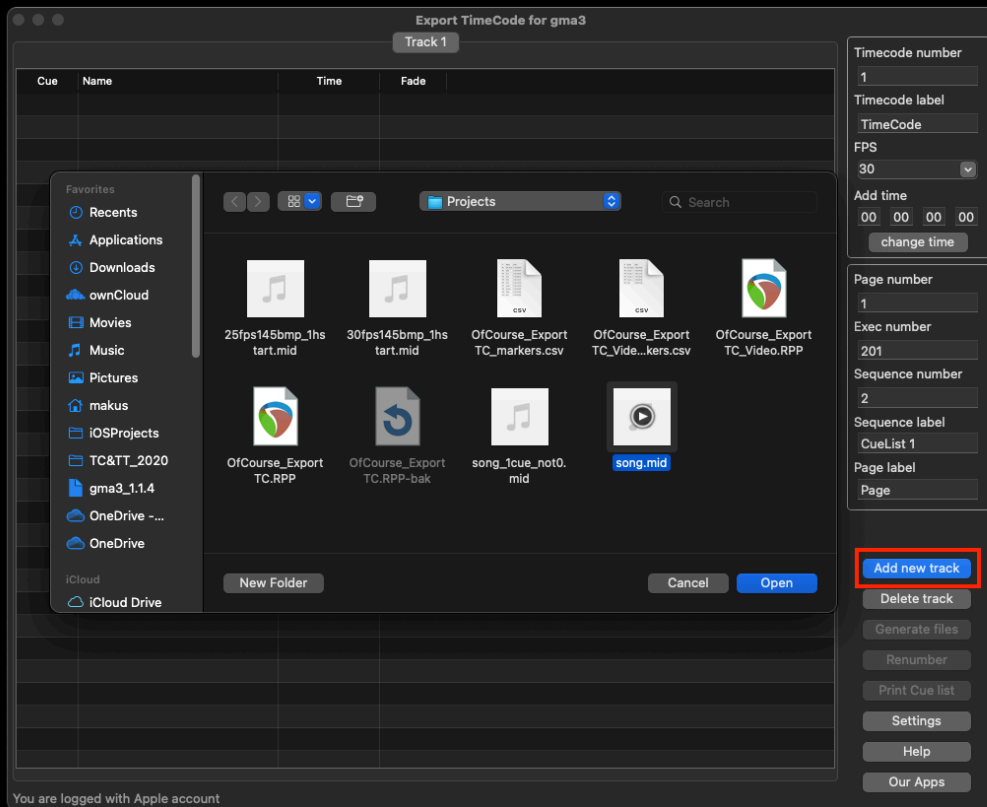
Directly from Reaper Project.



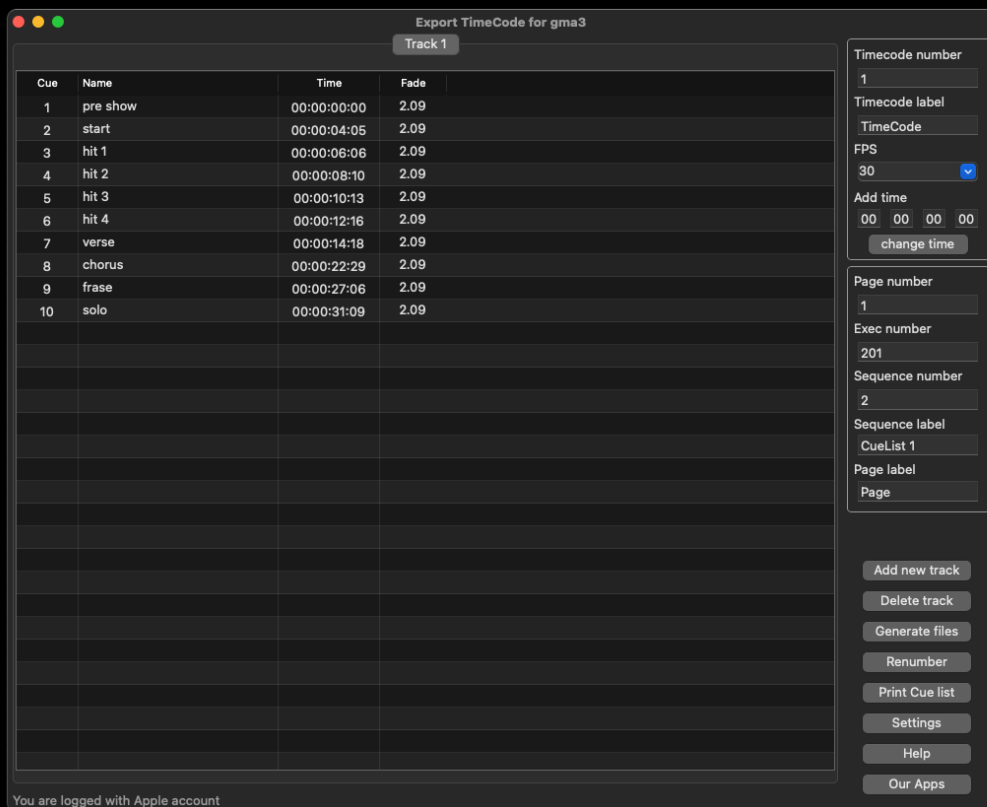
from exported text file from Reaper Project (*.csv).



Or, from midi file.



As a result, you will see your Cue List (Sequence).



Now you can change the Name, Number, Fade for cues.

Export TimeCode for gma3

Track 1

Cue	Name	Time	Fade
1	pre show	00:00:00:00	2.09
2	start	00:00:04:05	2.09
3	hit 1	00:00:06:06	2.09
4	hit 2	00:00:08:10	2.09
5	hit 3	00:00:10:13	2.09
6	hit 4	00:00:12:16	2.09
7	verse	00:00:14:18	2.09
8	chorus	00:00:22:29	2.09
9	frase	00:00:27:06	2.09
10	solo	00:00:31:09	2.09

change fade time

change cue name

remove cue

Timecode number

1

Timecode label

TimeCode

FPS

30

Add time

00 00 00 00

change time

Page number

1

Exec number

201

Sequence number

2

Sequence label

CueList 1

Page label

Page

Add new track

Delete track

Generate files

Renumber

Print Cue list

Settings

Help

Our Apps

You are logged with Apple account

7. Do not forget to set Timecode number, Timecode label, Page number, Executor number, Sequence number, Sequence label, Page label.

Export TimeCode for gma3

Track 1

Cue	Name	Time	Fade
1	pre show	00:00:00:00	2.09
2	start	00:00:04:05	2.09
3	hit 1	00:00:06:06	2.09
4	hit 2	00:00:08:10	2.09
5	hit 3	00:00:10:13	2.09
6	hit 4	00:00:12:16	2.09
7	verse	00:00:14:18	2.09
8	chorus	00:00:22:29	2.09
9	frase	00:00:27:06	2.09
10	solo	00:00:31:09	2.09

Timecode number

1

Timecode label

TimeCode

FPS

30

Add time

00 00 00 00

change time

Page number

1

Exec number

201

Sequence number

2

Sequence label

Light

Page label

Page

Add new track

Delete track

Generate files

Renumber

Print Cue list

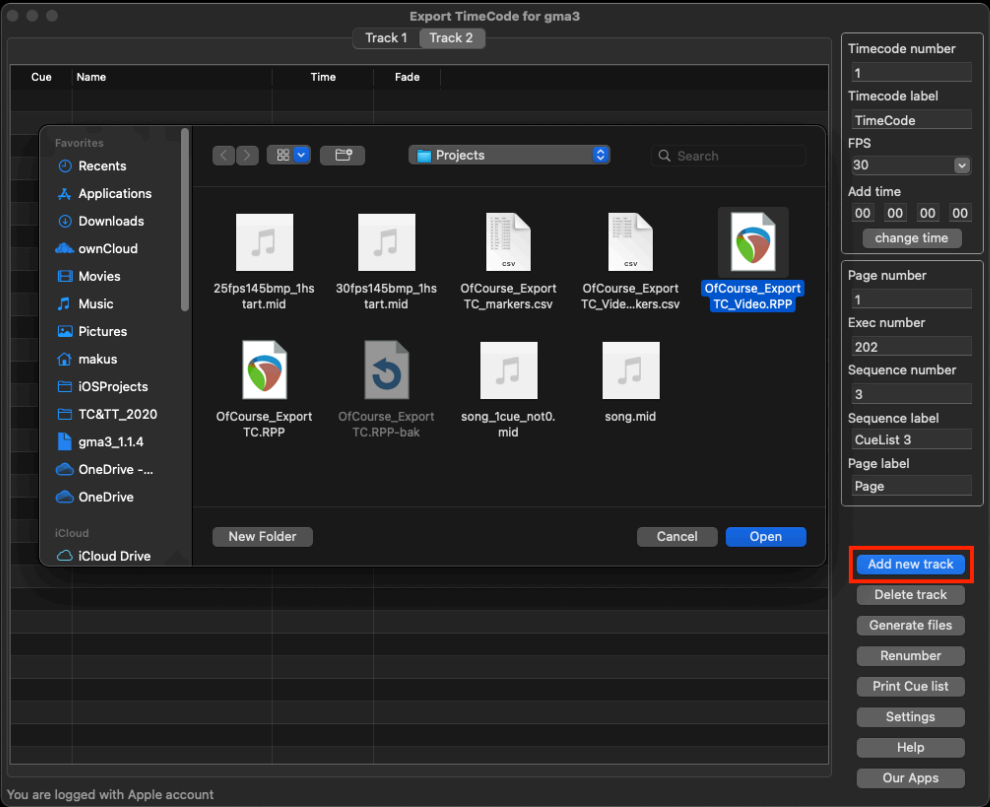
Settings

Help

Our Apps

You are logged with Apple account

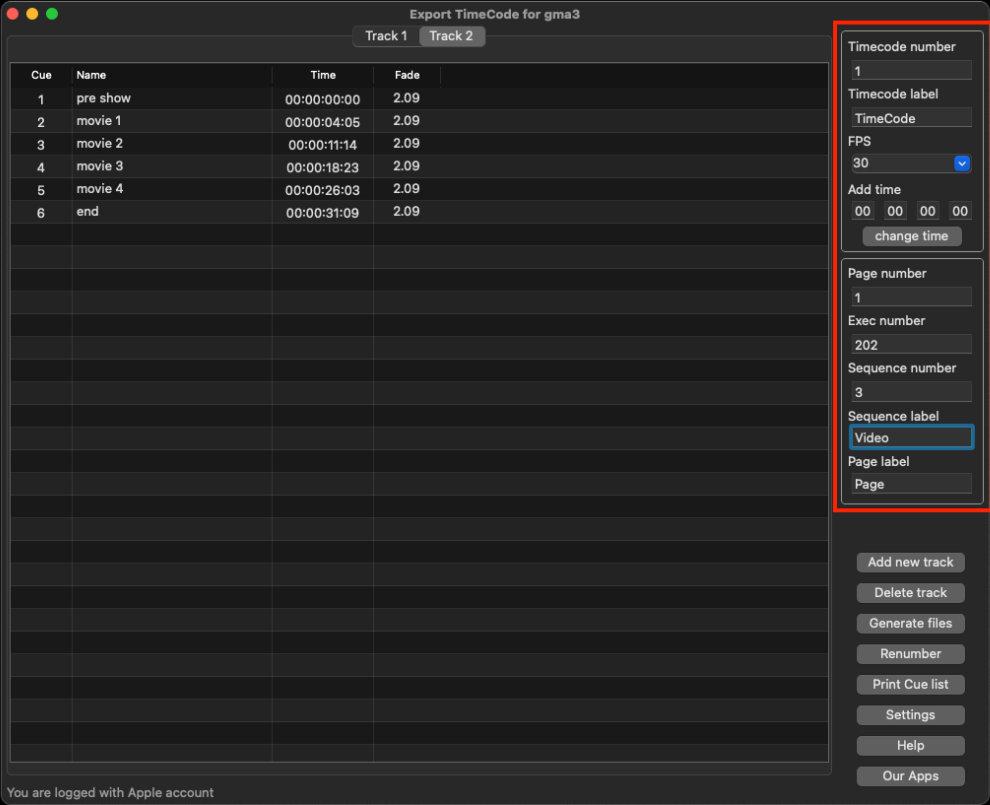
8. You can now import another track (Sequence) into the same Timecode.



As a result, you will see Cue Lists (Sequences) – Tracks in Timecode.

Now you can change the Name, Number, Fade for cues.

9. Do not forget to set, Executor number, Sequence number, Sequence label.



You can also print Cue Lists (Sequences).

Export TimeCode for gma3

Track 1Track 2

Cue	Name	Time	Fade
1	pre show	00:00:00:00	2.09
2	start	00:00:04:05	2.09
3	hit 1		
4	hit 2		
5	hit 3		
6	hit 4		
7	verse		
8	chorus		
9	frase		
10	solo		

Print

1 of 1

Export TimeCode for gma3 - Light - Page

Cue	Cue name	Time	Fade
1	pre show	00:00:00:00	2.09
2	start	00:00:04:05	2.09
3	hit 1	00:00:08:00	2.09
4	hit 2	00:00:12:00	2.09
5	hit 3	00:00:16:00	2.09
6	hit 4	00:00:20:00	2.09
7	verse	00:00:24:00	2.09
8	chorus	00:00:28:00	2.09
9	frase	00:00:32:00	2.09
10	solo	00:00:36:00	2.09

Printer: PrinterBiuro

Presets: Default Settings

Copies: 1

☐ Black & White

Pages: ☒ All

☐ From: 1 to: 1

PDF

Cancel

Print

Timecode number

1

Timecode label

TimeCode

FPS

30

Add time

00 00 00 00

change time

Page number

1

Exec number

201

Sequence number

2

Sequence label

Light

Page label

Page

Add new track

Delete track

Generate files

Renumber

Print Cue list

Settings

Help

Our Apps

You are logged with Apple account

Export TimeCode for gma3

Track 1Track 2

Cue	Name	Time	Fade
1	pre show	00:00:00:00	2.09
2	movie 1	00:00:04:05	2.09
3	movie 2		
4	movie 3		
5	movie 4		
6	end		

Print

1 of 1

Export TimeCode for gma3 - Video - Page

Cue	Cue name	Time	Fade
1	pre show	00:00:00:00	2.09
2	movie 1	00:00:04:05	2.09
3	movie 2	00:00:08:00	2.09
4	movie 3	00:00:12:00	2.09
5	movie 4	00:00:16:00	2.09
6	end	00:00:20:00	2.09

Printer: PrinterBiuro

Presets: Default Settings

Copies: 1

☐ Black & White

Pages: ☒ All

☐ From: 1 to: 1

PDF

Cancel

Print

Timecode number

1

Timecode label

TimeCode

FPS

30

Add time

00 00 00 00

change time

Page number

1

Exec number

202

Sequence number

3

Sequence label

Video

Page label

Page

Add new track

Delete track

Generate files

Renumber

Print Cue list

Settings

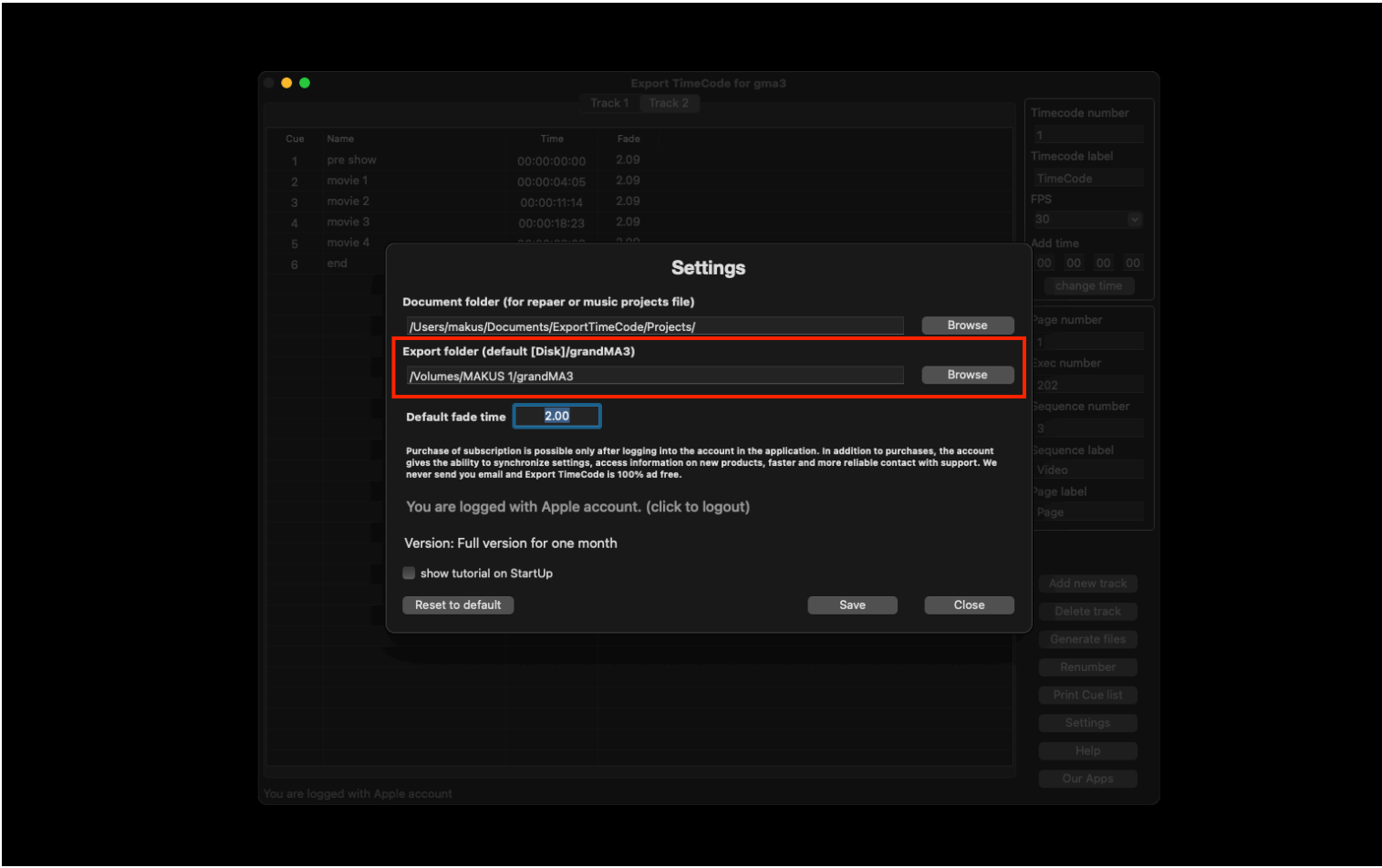
Help

Our Apps

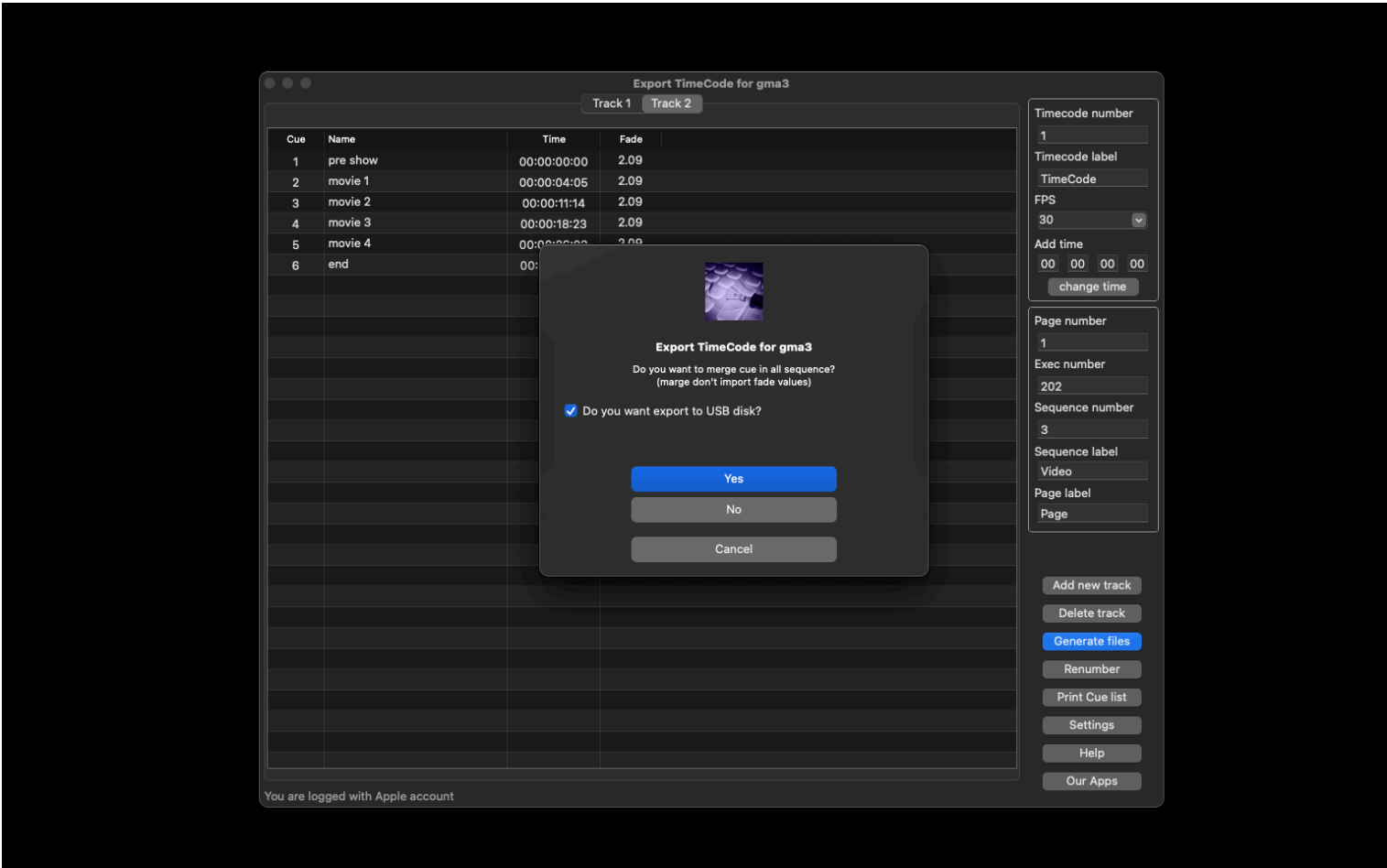
You are logged with Apple account

Finally, you can export Cue List (Sequence) with Timecode to grandMA3.

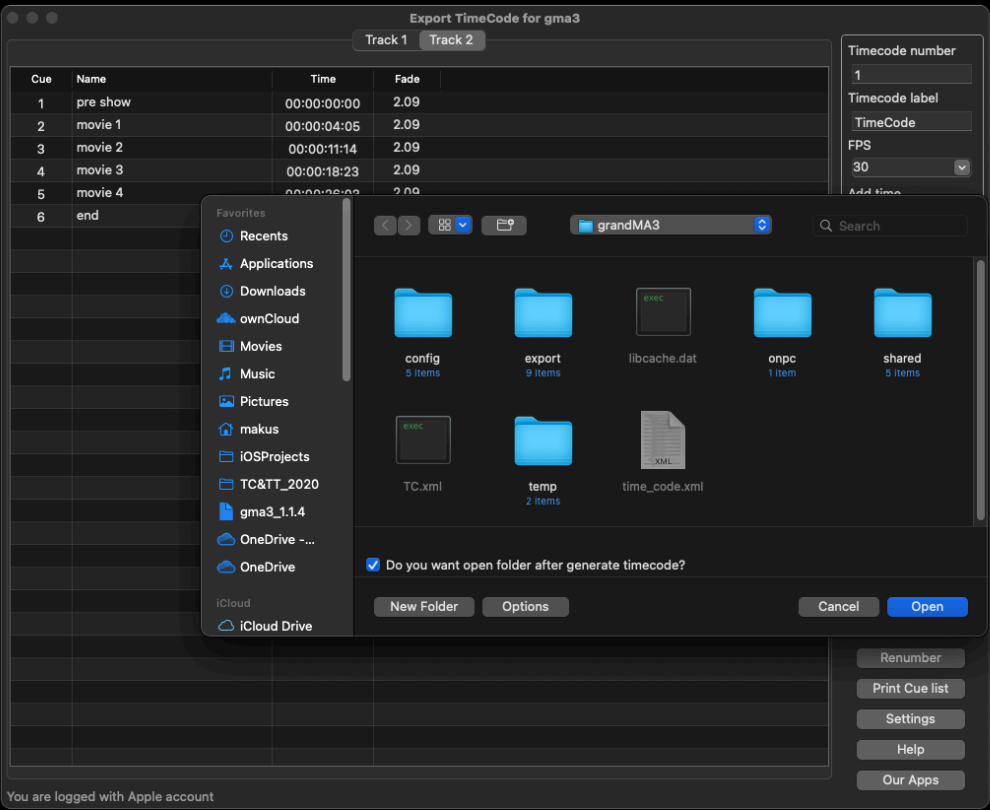
- 1. Click tab Settings.
- 2. Set directories for Timecode and Macro – grandMA3 onPC Folders or USB Memory Stick Folders.



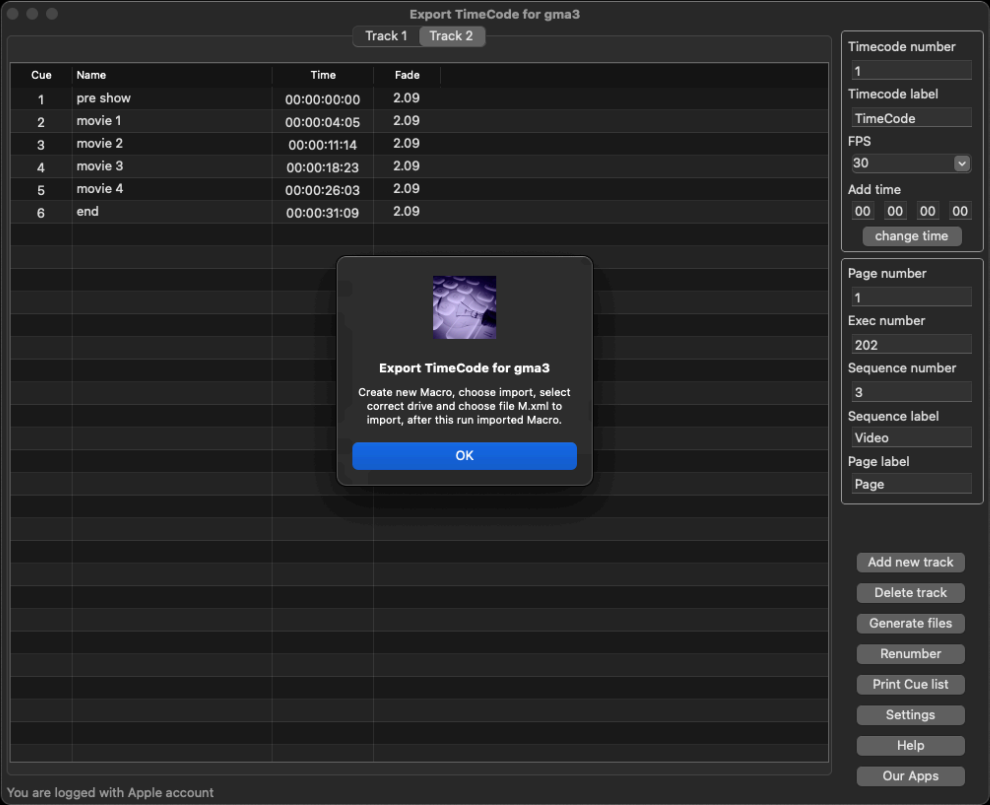
- 3. Click tab Generate files, you can choose that you have marge cue or not. If you export to USB disk please select checkbox.



Confirm your folder choose.



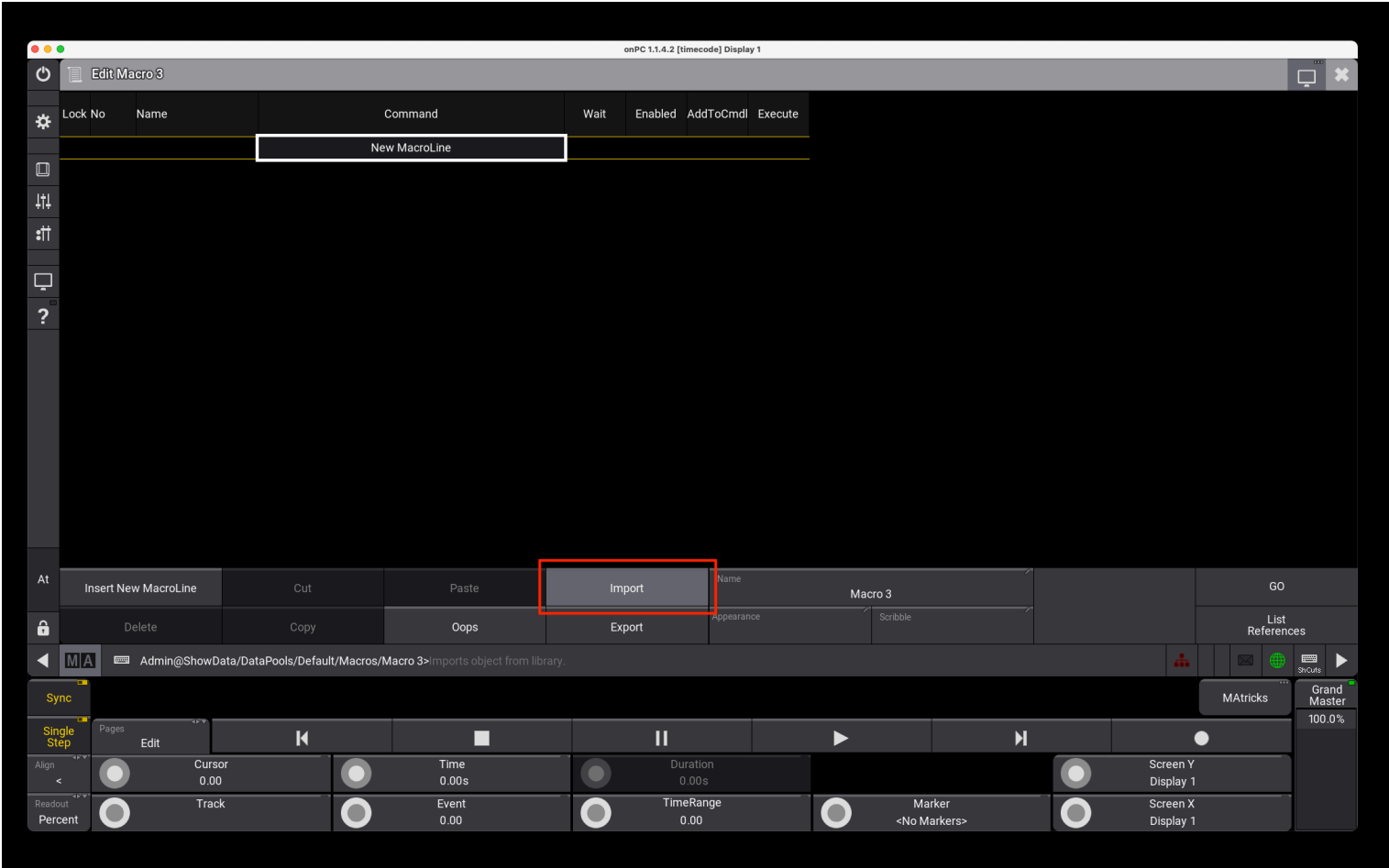
Your Cue Lists (Sequences) with Timecode selected Page, Executor, Fade is ready to be imported using a Macro from folder in grandMA3 onPC or from macro on USB Memory Stick!



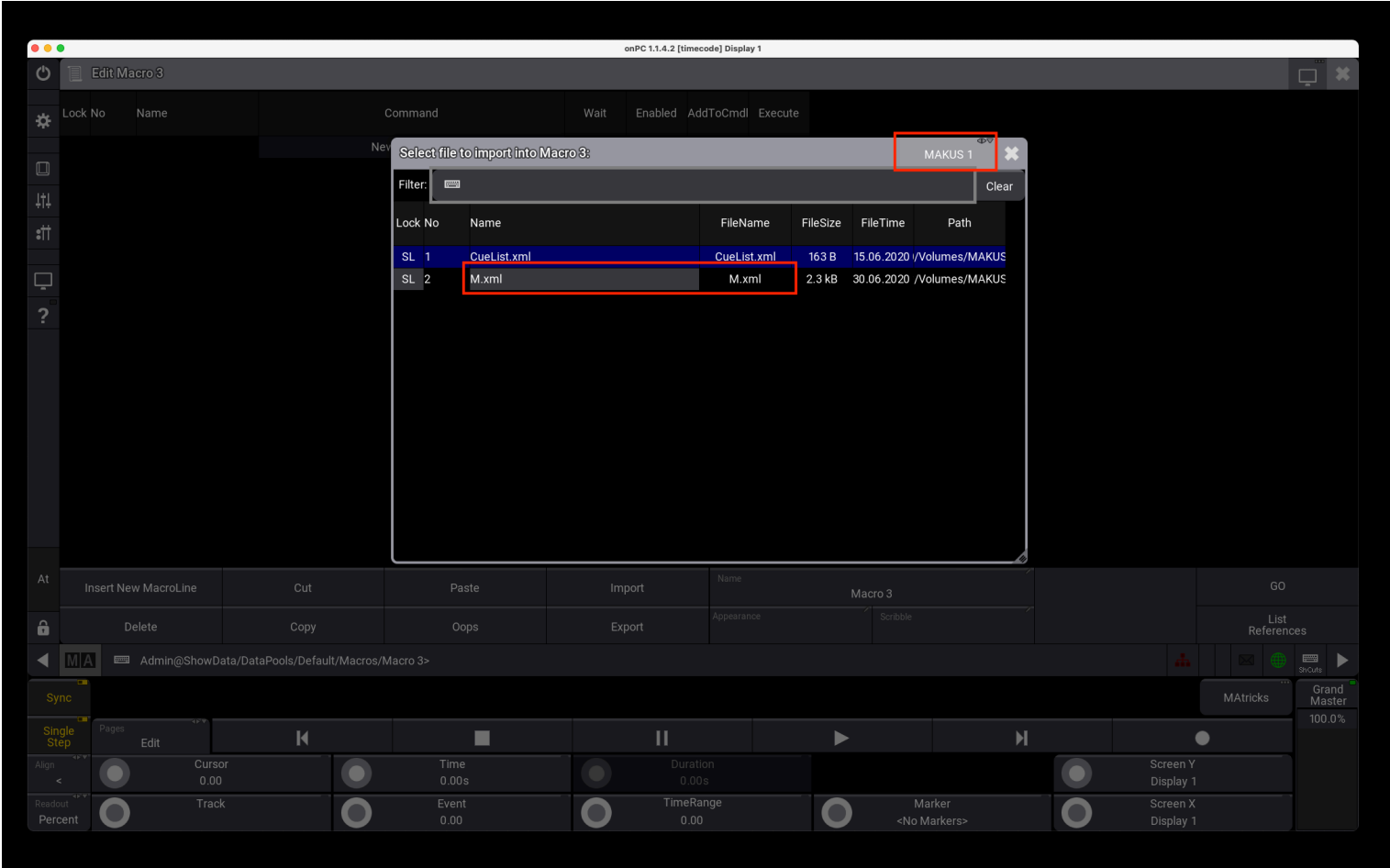
4. Run your show on grandMA3.



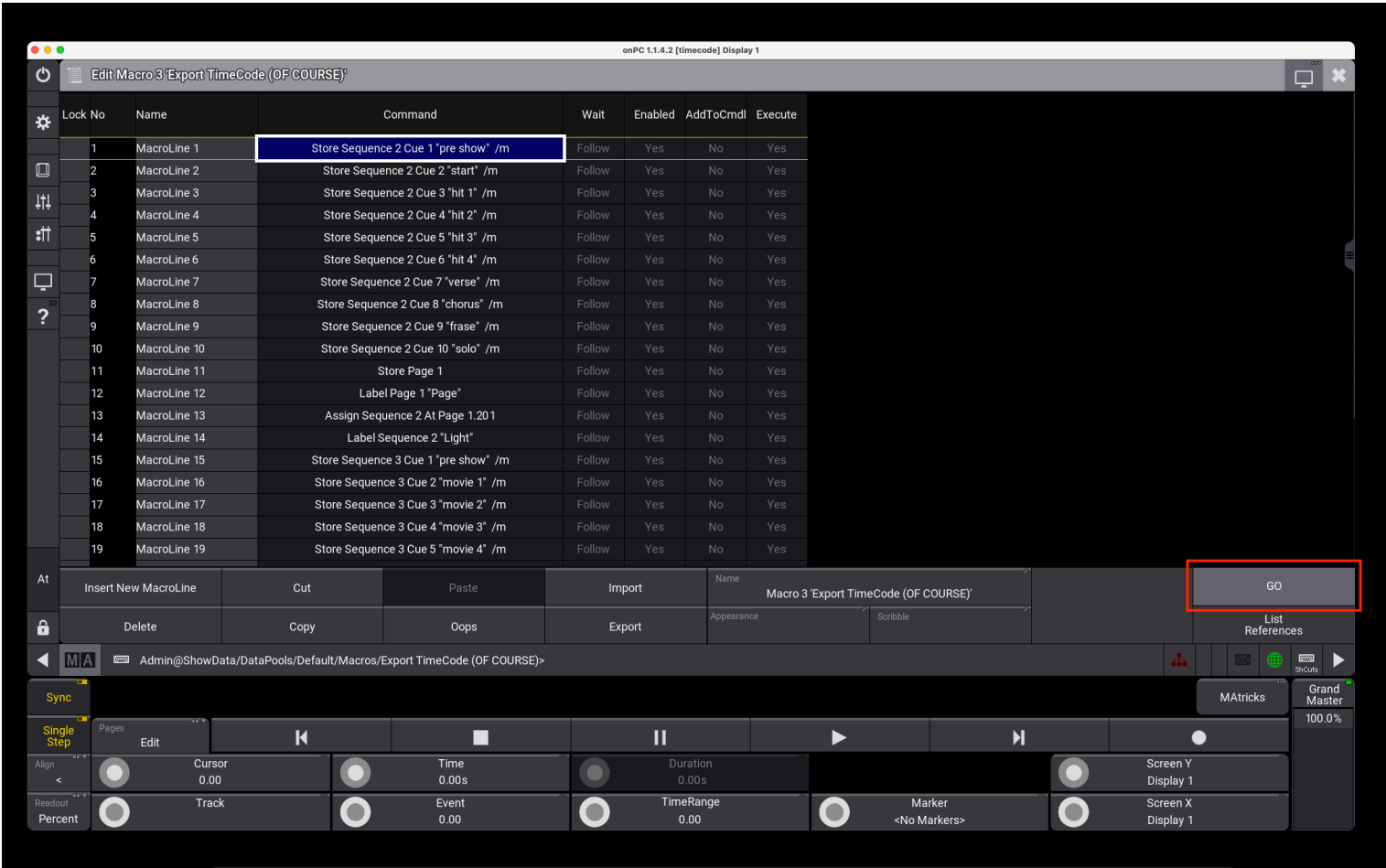
5. Create new macro, click Import



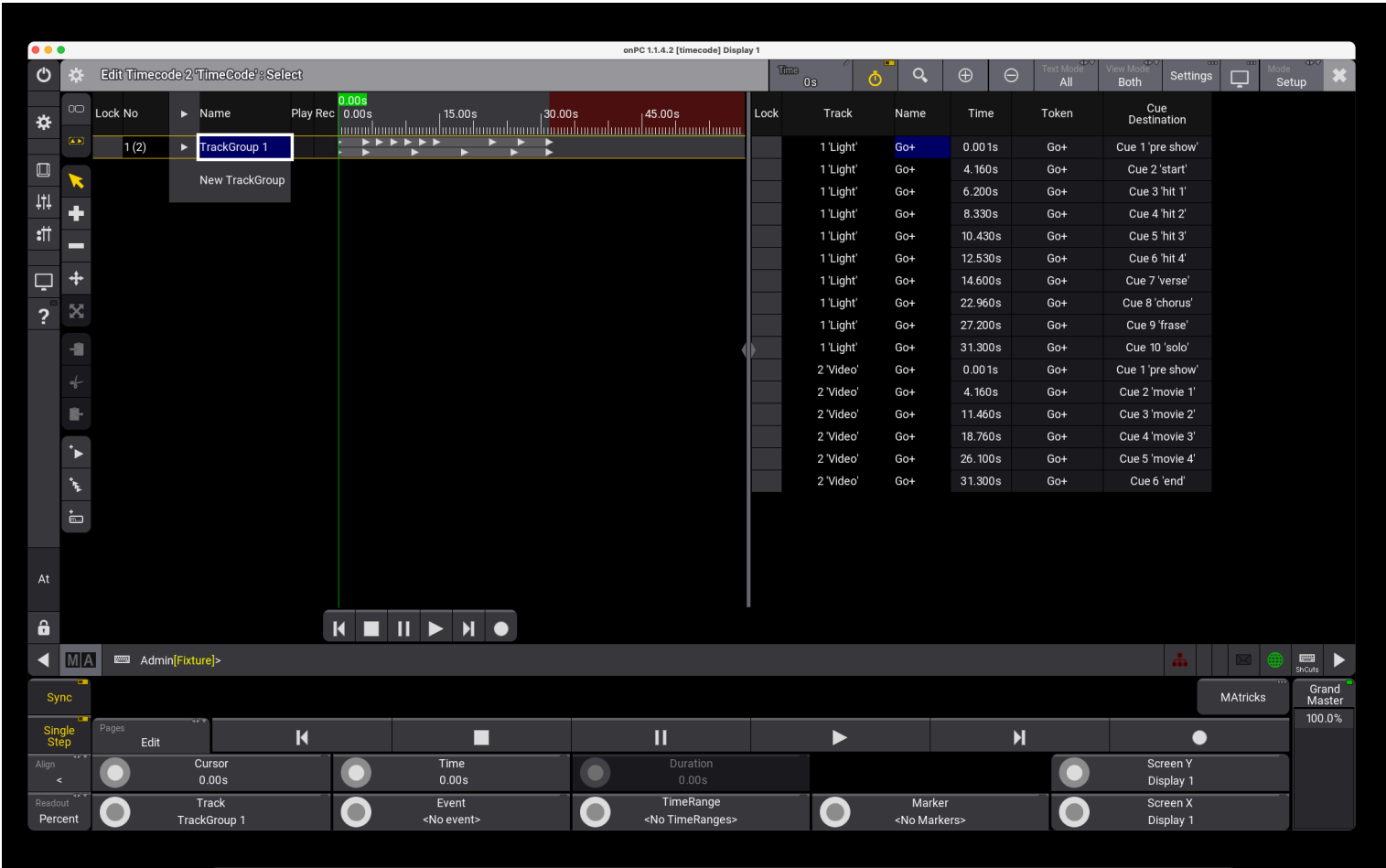
6. Choose correct disk (USB or local), and choose M.xml file.



7. Now run this Macro.



Your Cue Lists (Sequences) with Timecode selected Page, Executor, Fade is already in show on grandMA3!



1) Adding time.

You can correct or add e.g. 1 hour or several minutes to your timecode.

[illegible]

And the result:

Export TimeCode for gma3

Track 1 Track 2

Cue	Name	Time	Fade
1	pre show	01:00:00:00	2.09
2	start	01:00:04:05	2.09
3	hit 1	01:00:06:06	2.09
4	hit 2	01:00:08:10	2.09
5	hit 3	01:00:10:13	2.09
6	hit 4	01:00:12:16	2.09
7	verse	01:00:14:18	2.09
8	chorus	01:00:22:29	2.09
9	frase	01:00:27:06	2.09
10	solo	01:00:31:09	2.09

Timecode number
1

Timecode label

TimeCode

FPS
30

Add time
01 00 00 00

change time

Page number
1

Exec number
201

Sequence number
2

Sequence label
Light

Page label
Page

Add new track

Delete track

Generate files

Renumber

Print Cue list

Settings

Help

Our Apps

You are logged with Apple account

2) You can change the cue number using renumbering.

