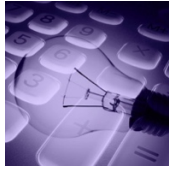


# Export TimeCode for gma3



This is simple tool to Export Cue List (Sequence) with Timecode to the grandMA3, with many tracks.

Change Cue Number (renumber), Cue Fade from within the application. You can also print your Cue List (Sequence).

**Now you can export cue list and timecode from midi file. Midi file you can prepare in almost all music application like Pro Tools, Logic Pro, Cubase, Reaper etc.**

In this help we show you how export cue list and timecode from Reaper.

Just import to Reaper multimedia file (music or video) you're working on.

Prepare all Cues (Markers in Reaper) – light changes, accents, solos, etc. that you want to use in show.

**Export TimeCode for gma3** will finish all work for you by importing to console **Of Course**:

- Timecode number
- Timecode name
- FPS
- Page number
- Page name
- More than one Cue List (Sequence)
- More than one Track in Timecode
- Sequence number
- Sequence name
- Executor number
- Cue Fade

As simple as that!

Don't miss that chance! Do not hesitate and try it completely for free!

## Description:

Download and install **Export TimeCode for gma3**:

[https://software.ofcourse.com.pl/downloads/ExportGMA3TC/ExportTimeCode\\_gma3\\_installer.exe](https://software.ofcourse.com.pl/downloads/ExportGMA3TC/ExportTimeCode_gma3_installer.exe)

Download and install "Reaper":

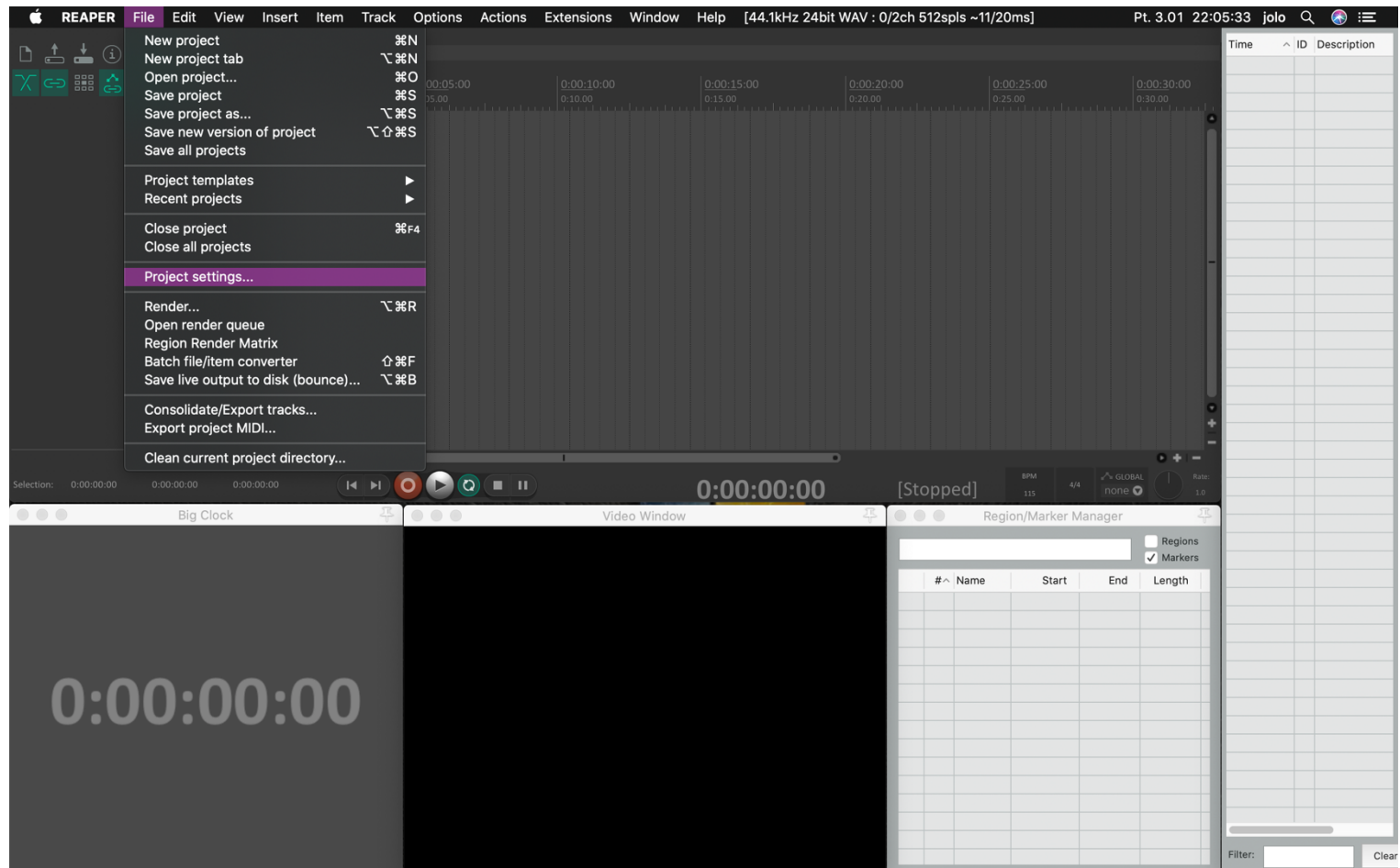
<http://www.reaper.fm/download.php>

Download and install "SWS Extension" for Reaper:

<http://www.sws-extension.org/>

Run Reaper.

1. Open File tab and Project settings.



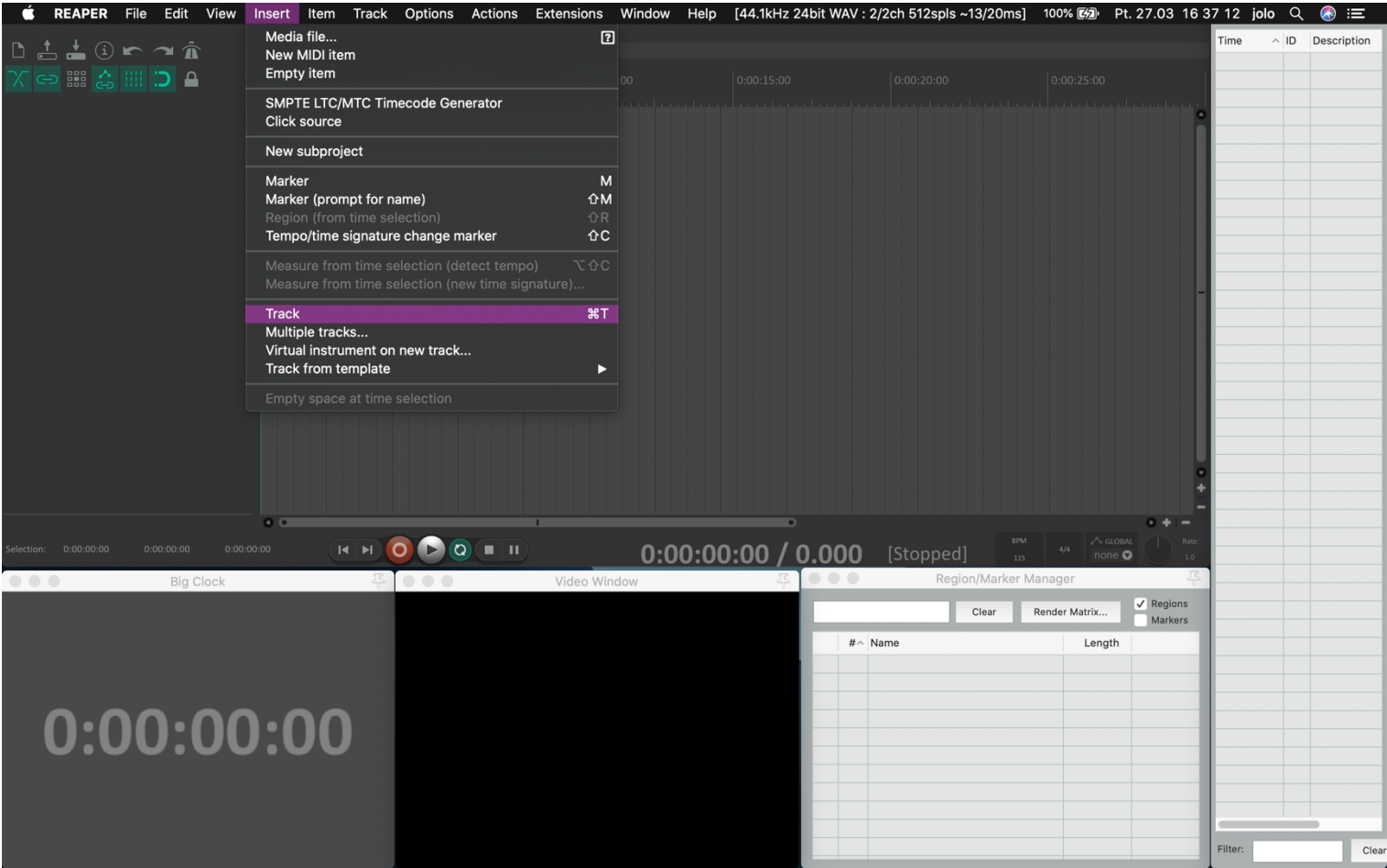
The screenshot displays the Reaper v6.02/64 interface. The main window shows a timeline with a large '0:00:00:00' display at the bottom left. A 'Project Settings' dialog box is open in the center, with the 'Video' tab selected. The dialog contains the following settings:

- Frame rate: 30
- Preferred video: 24
- Video item visibility: 25
- Video colorspace: 29.97DF
- Always resample: 30
- Always resample: 48
- Use high quality: 60
- Preserve at 75

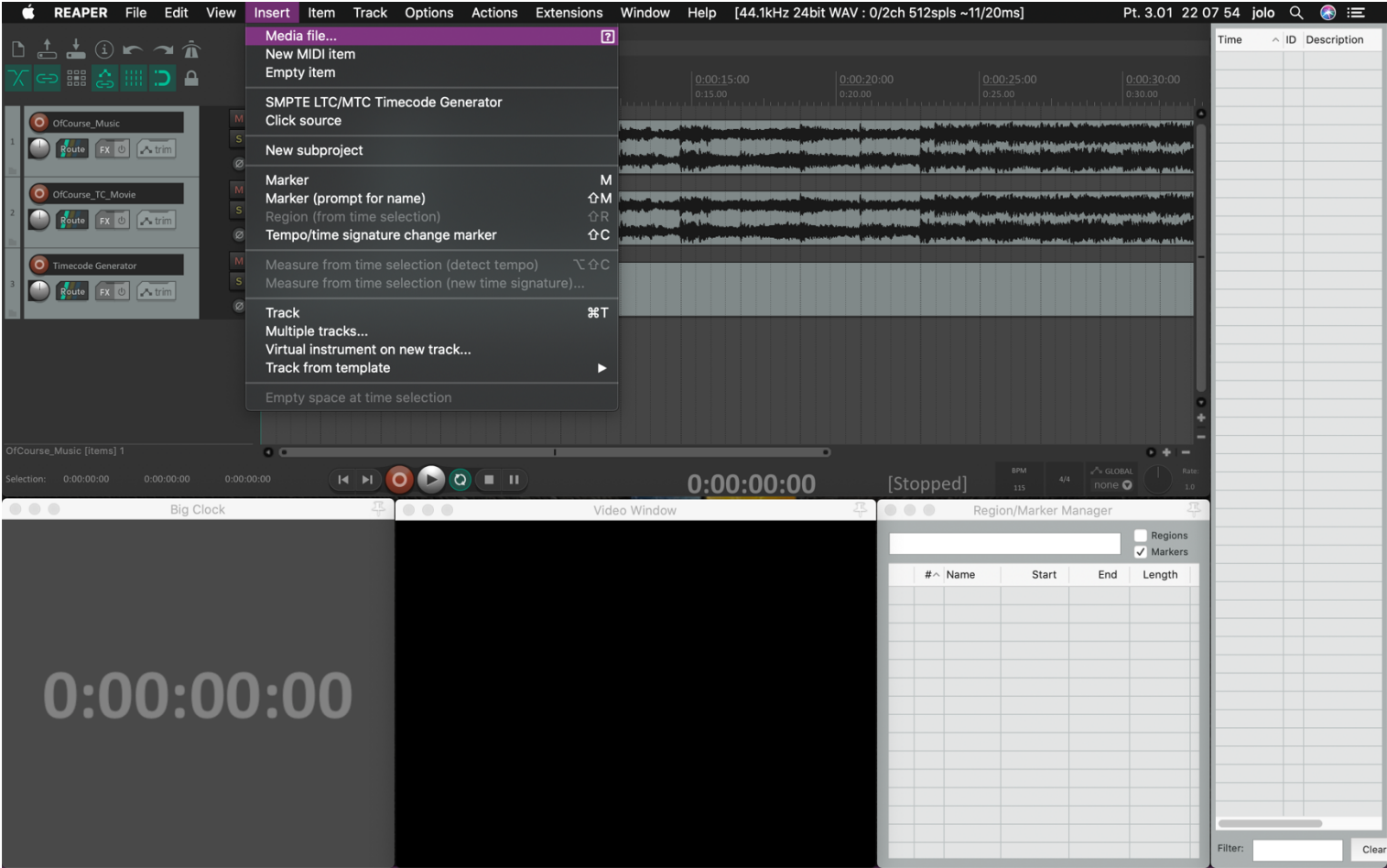
The background interface includes a 'Marker List' on the right side, showing a table with columns for Time, ID, and Description. The table is currently empty.

The screenshot shows the REAPER DAW interface. The top menu bar includes Apple logo, REAPER, File, Edit, View, Insert, Item, Track, Options, Actions, Extensions, Window, Help, and system status. The 'View' menu is open, listing various panels like Mixer, Master Track, Transport, Video, Monitoring FX, Docker, Media Explorer, Routing Matrix, Grouping Matrix, Track Wiring, Project Media/FX Bay, Track Manager, Screensets/Layouts, Region/Marker Manager, FX Browser, Media Item Properties, Big Clock, Performance Meter, Peaks Display Settings, Navigator, Tempo Envelope, Scale Finder, Virtual MIDI Keyboard, Show/hide all floating windows, Cascade all floating windows, Time unit for ruler, Zoom, Go to, Always on top, and Fullscreen. The 'Time unit for ruler' submenu is open, showing options: Minutes:Seconds, Measures.Beats, Measures.Beats (minimal), Seconds, Samples, ✓ Hours:Minutes:Seconds:Frames (selected), Absolute Frames, and Secondary time unit. The background shows a dark-themed DAW interface with a timeline at 0:00:00:00, a video window, and a region/marker manager.

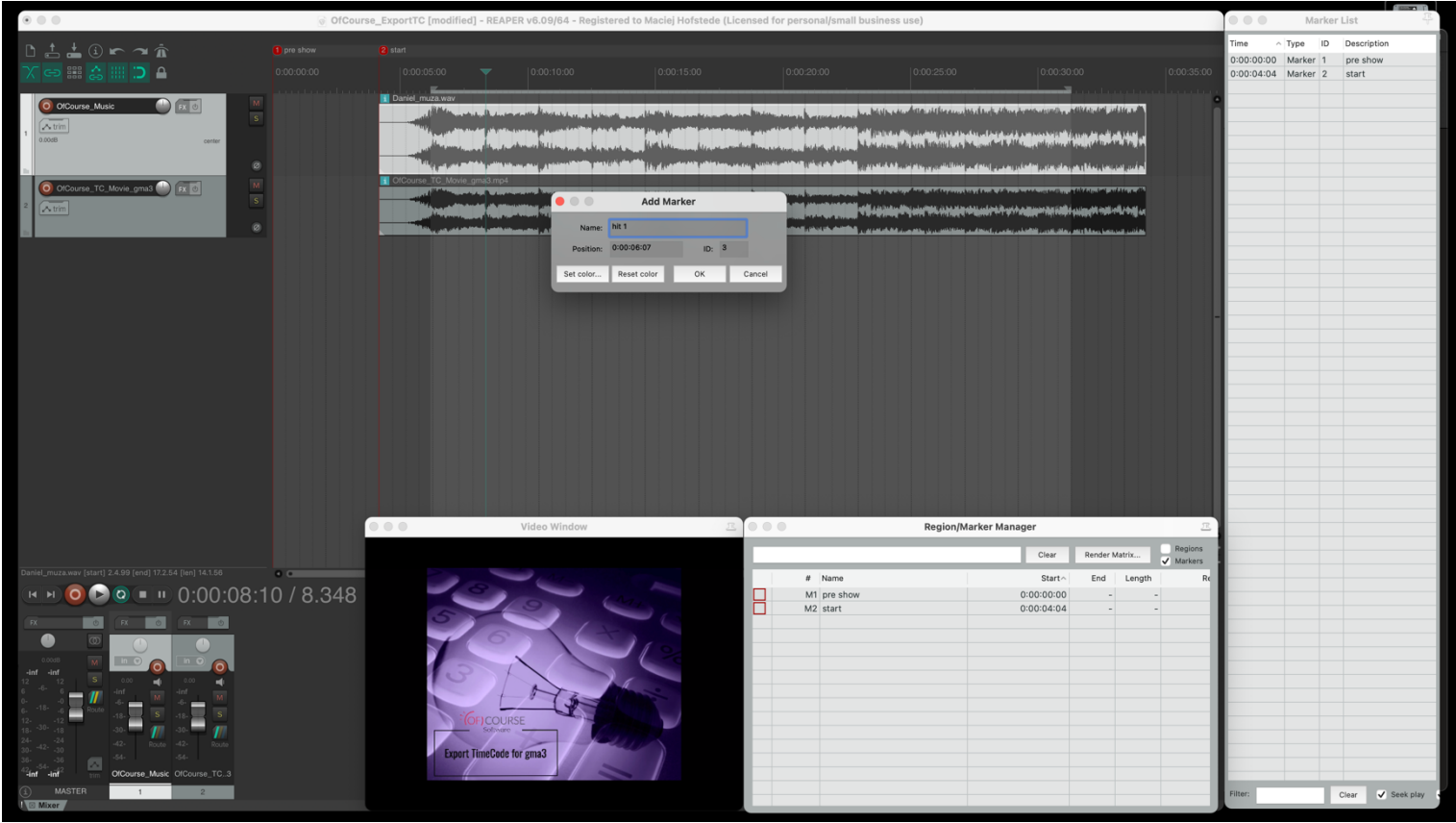
4. Open Insert tab and insert Track.



5. Open Insert tab and Import your media file.

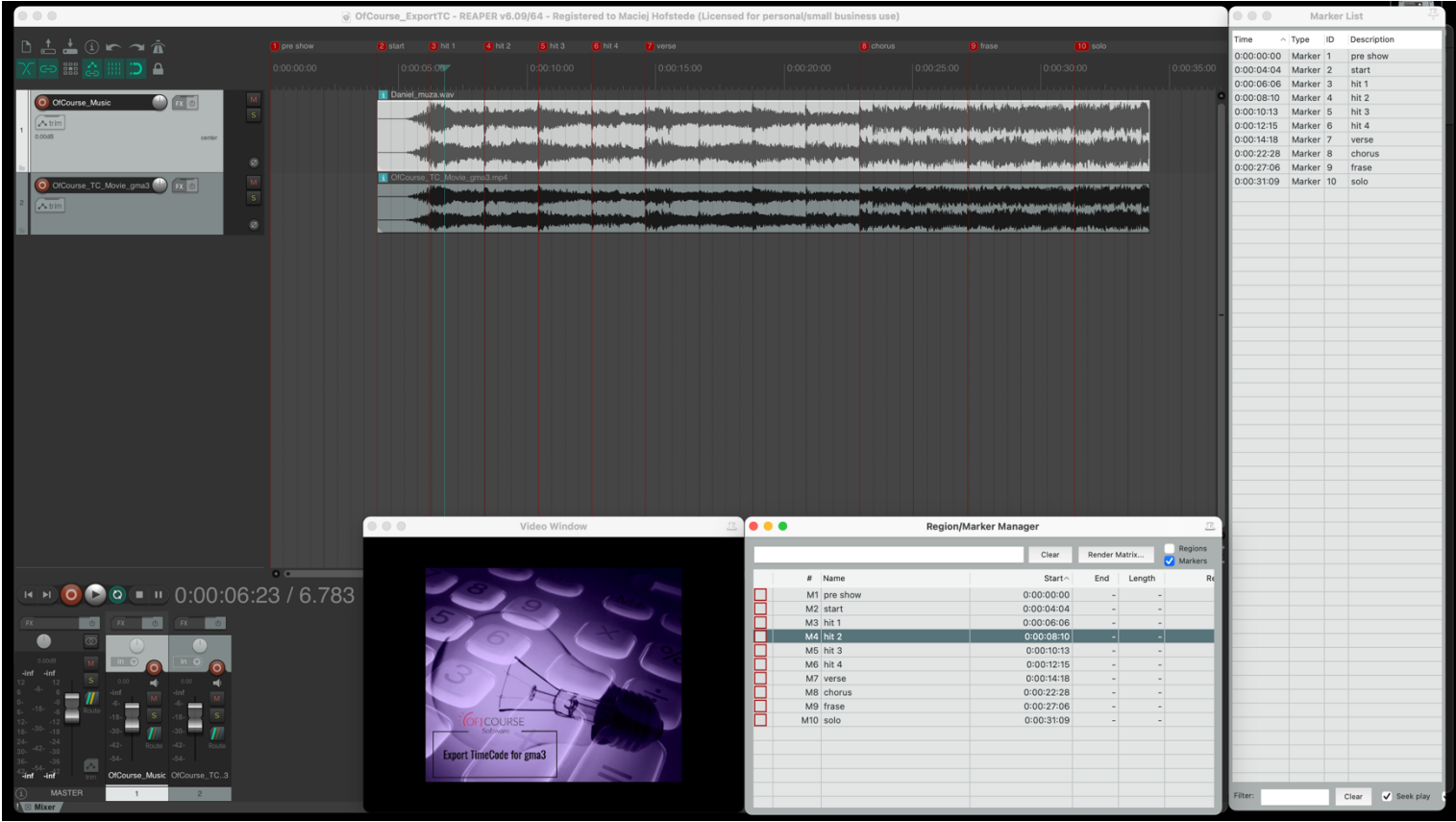


6. Create a Cue List (Sequence) use the Markers and give the names for Cues. **Important: don't use comma (",") in cue name.**



**7. Save Reaper Project.**

- 8. Open View tab and open Region/Marker Manager.
- 9. Click right mouse button and use the tab Export region/markers, name the text file (\*.csv) and save it.

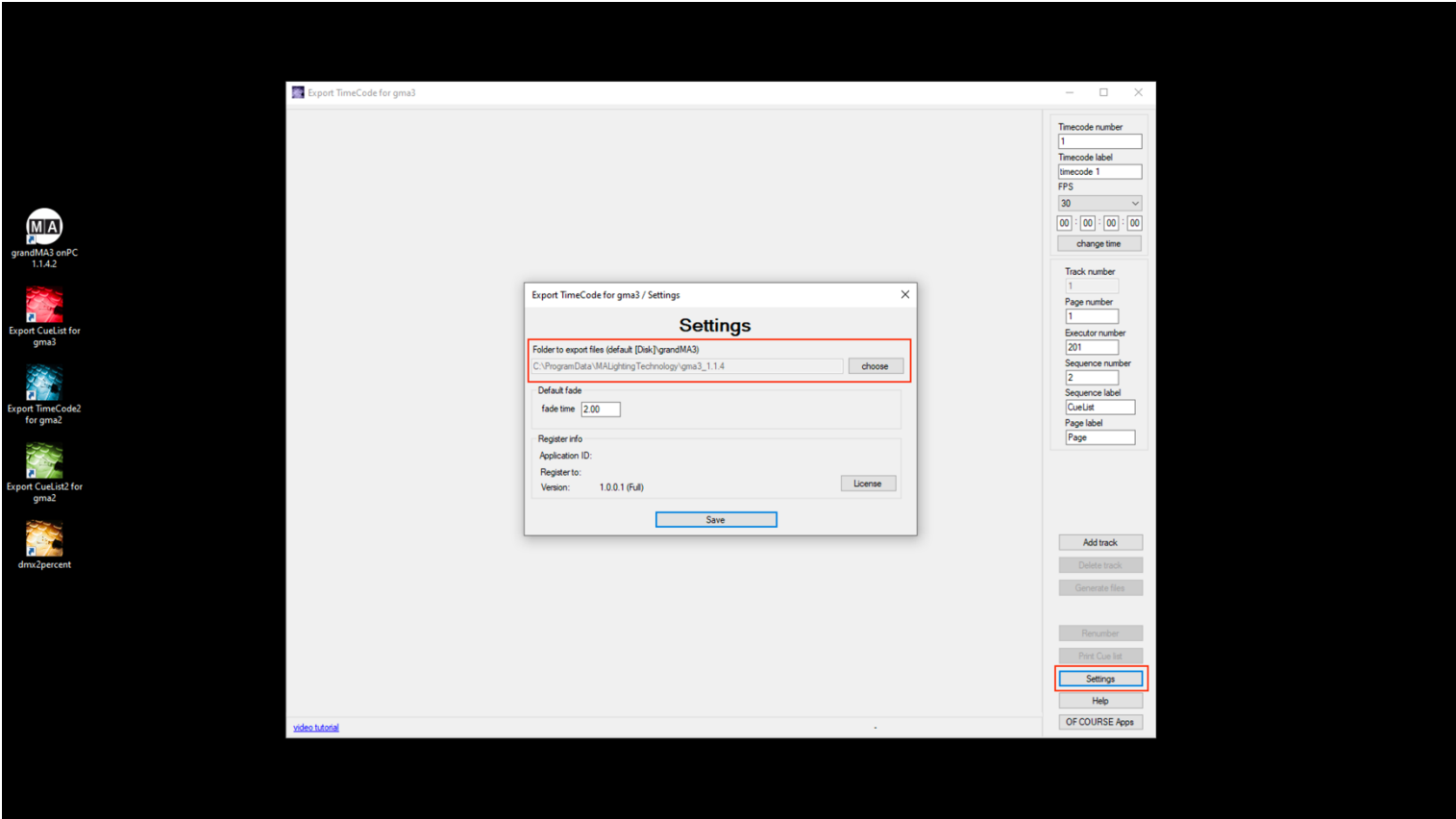


Your Cue List (Sequence) with Timecode is ready and now. You can export it to the grandMA3 use *Export TimeCode for gma3*.



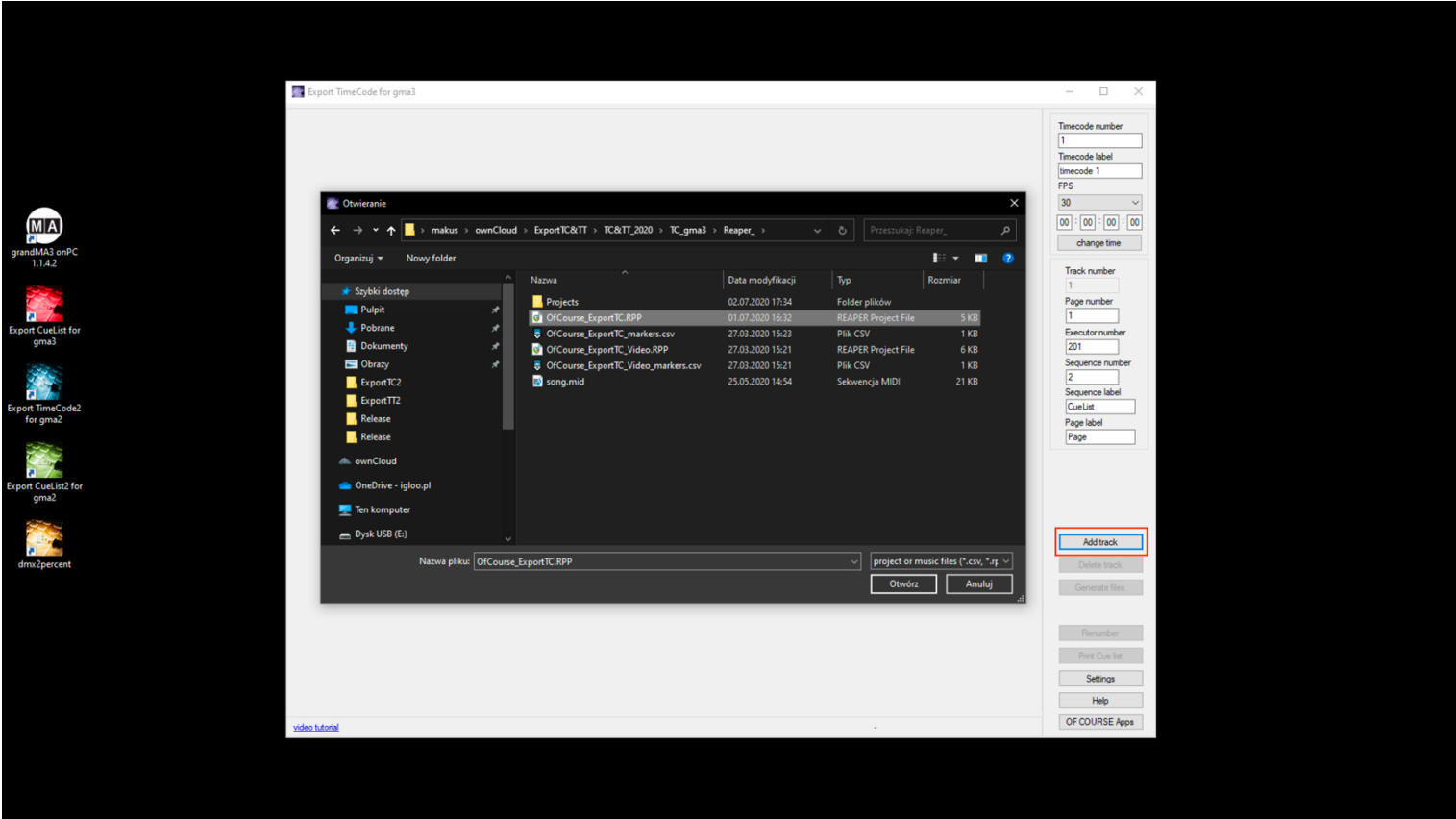
Run **Export TimeCode3 for gma3**.

- 1. Click tab Settings.
- 2. Set directories for Timecode and Macro – grandMA3 onPC Folders or USB Memory Stick Folders.
- 3. You can also set default Fade for Cues.
- 4. Save settings.

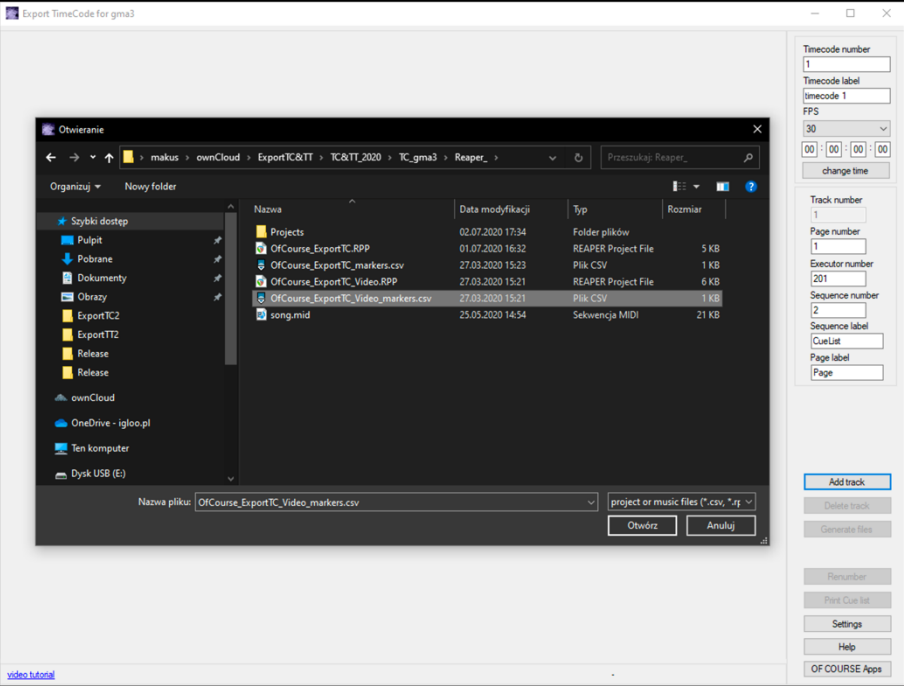


- 5. Click tab Load file and select your Cue List (Sequence).

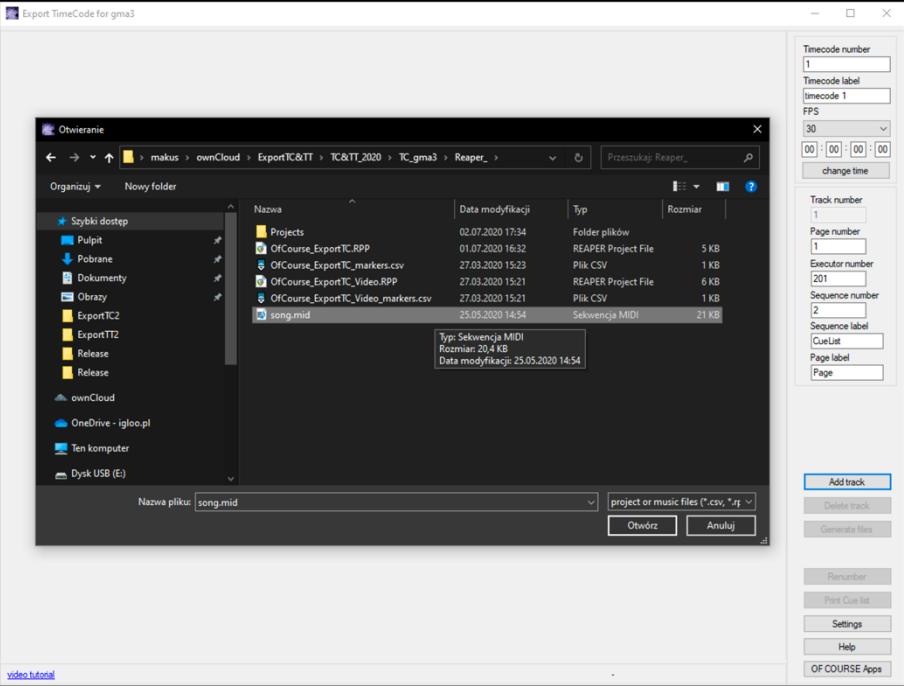
Directly from Reaper Project.



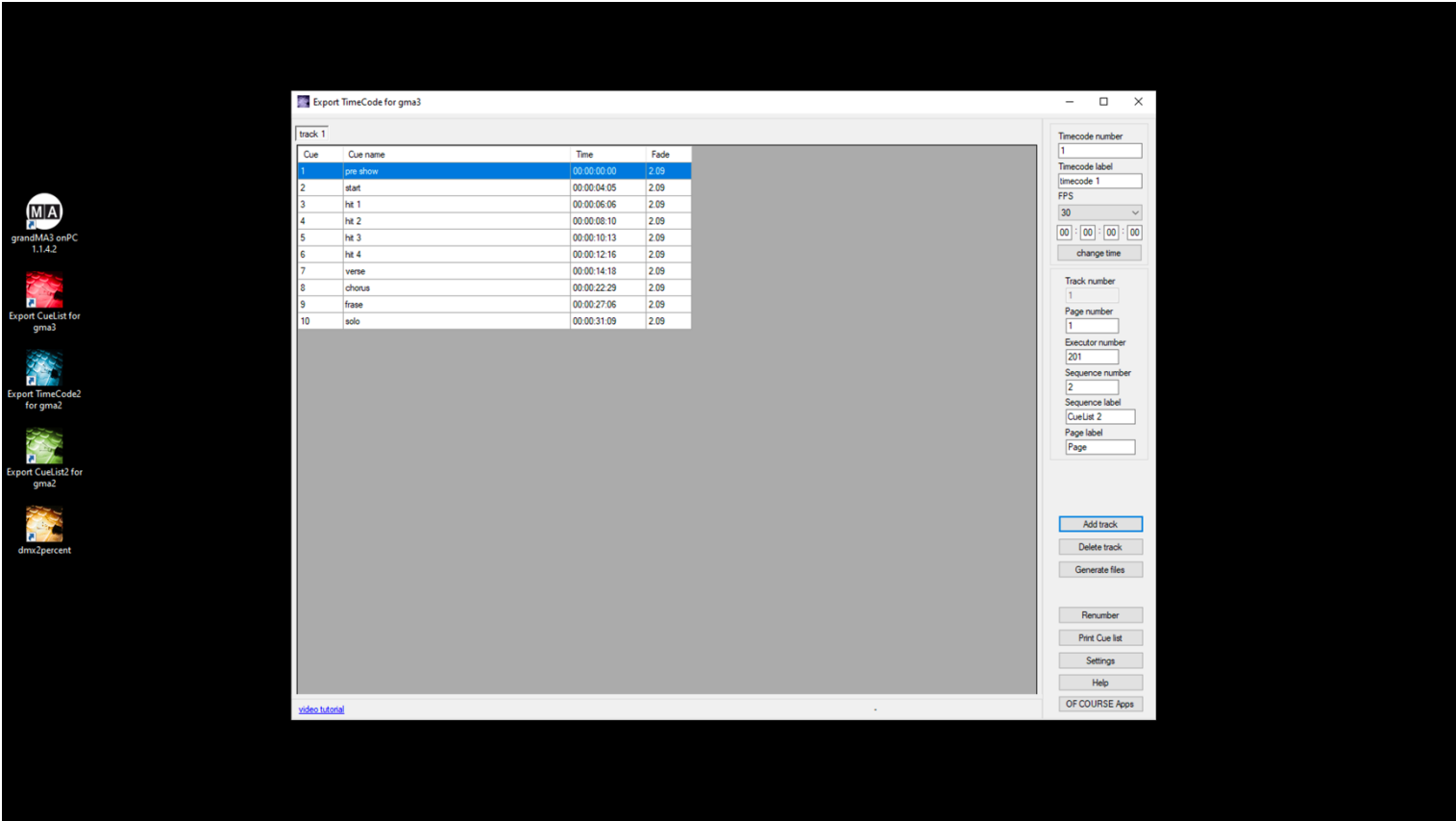
From exported text file from Reaper Project (\*.csv).



Or, from midi file.

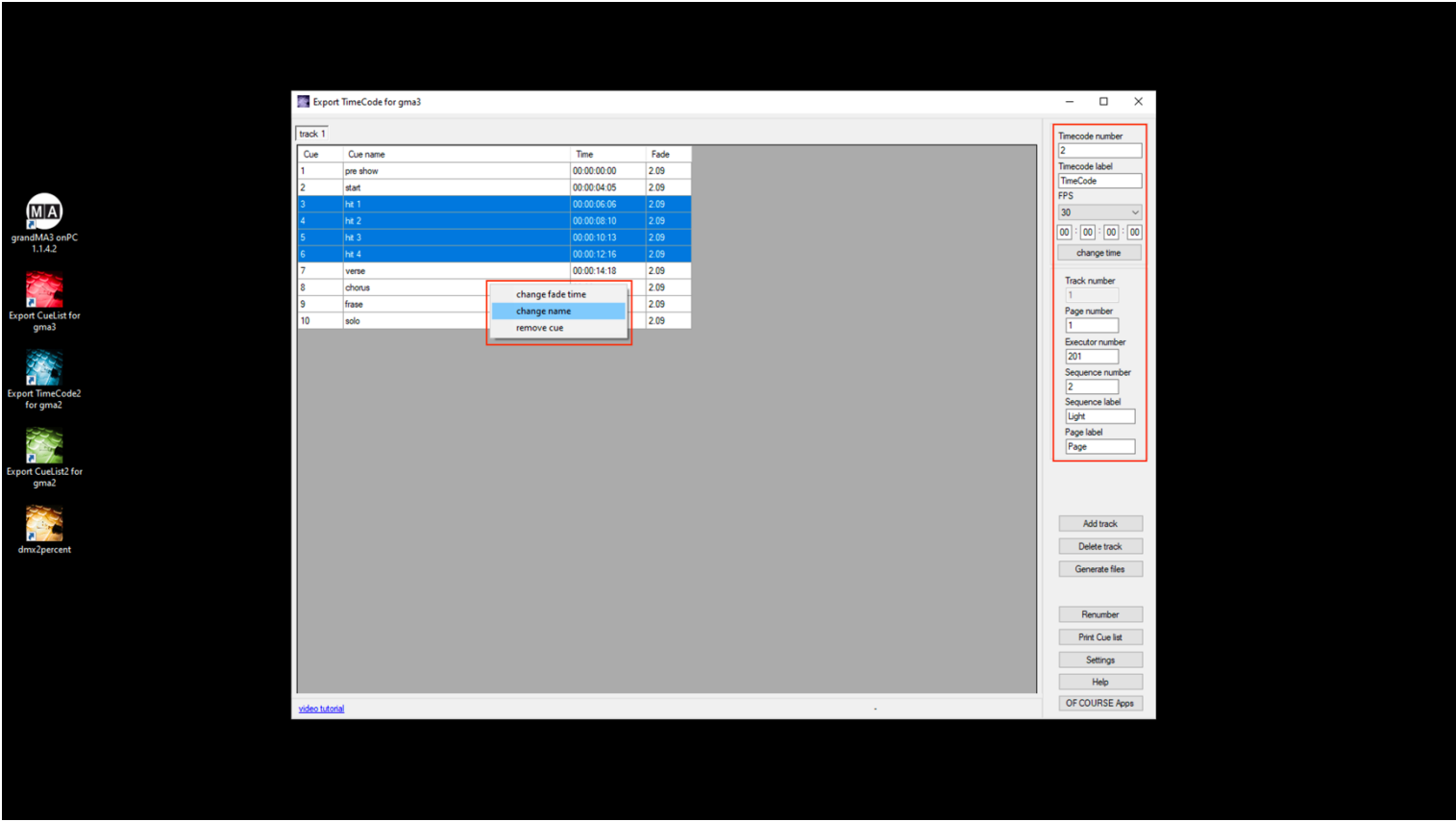


As a result, you will see your Cue List (Sequence).

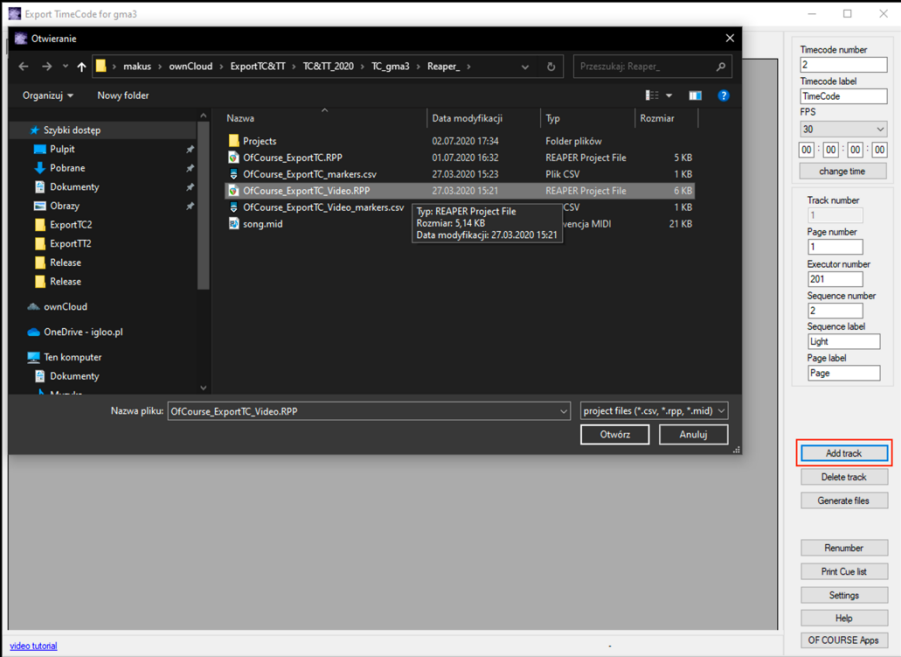


Now you can change the Name, Number and Fade for cues.

8. Do not forget to set Timecode number, Timecode label, Page number, Executor number, Sequence number, Sequence label, Page label.



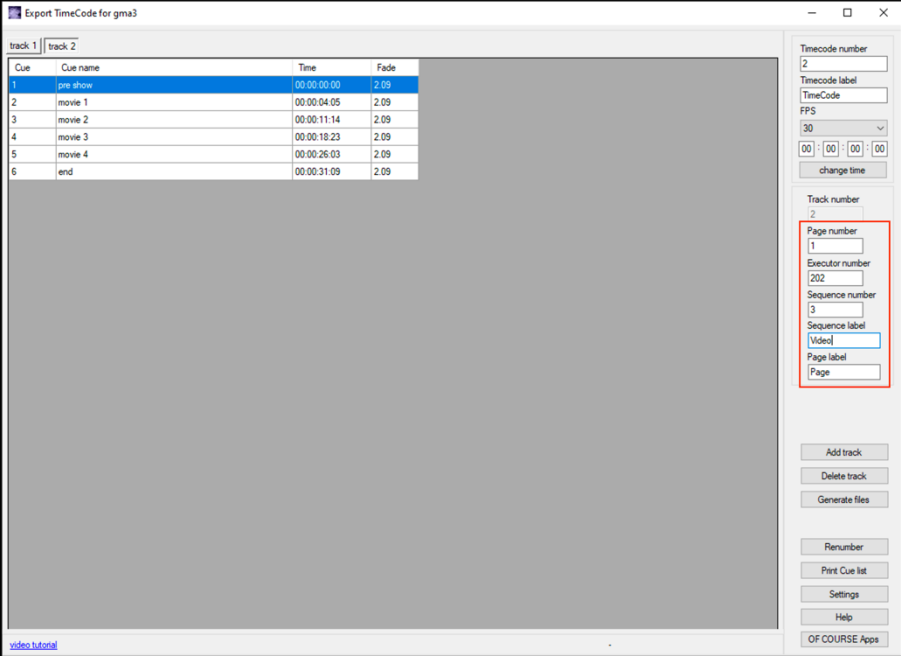
9. You can now import another track (Sequence) into the same Timecode.



As a result, you will see Cue Lists (Sequences) – Tracks in Timecode.

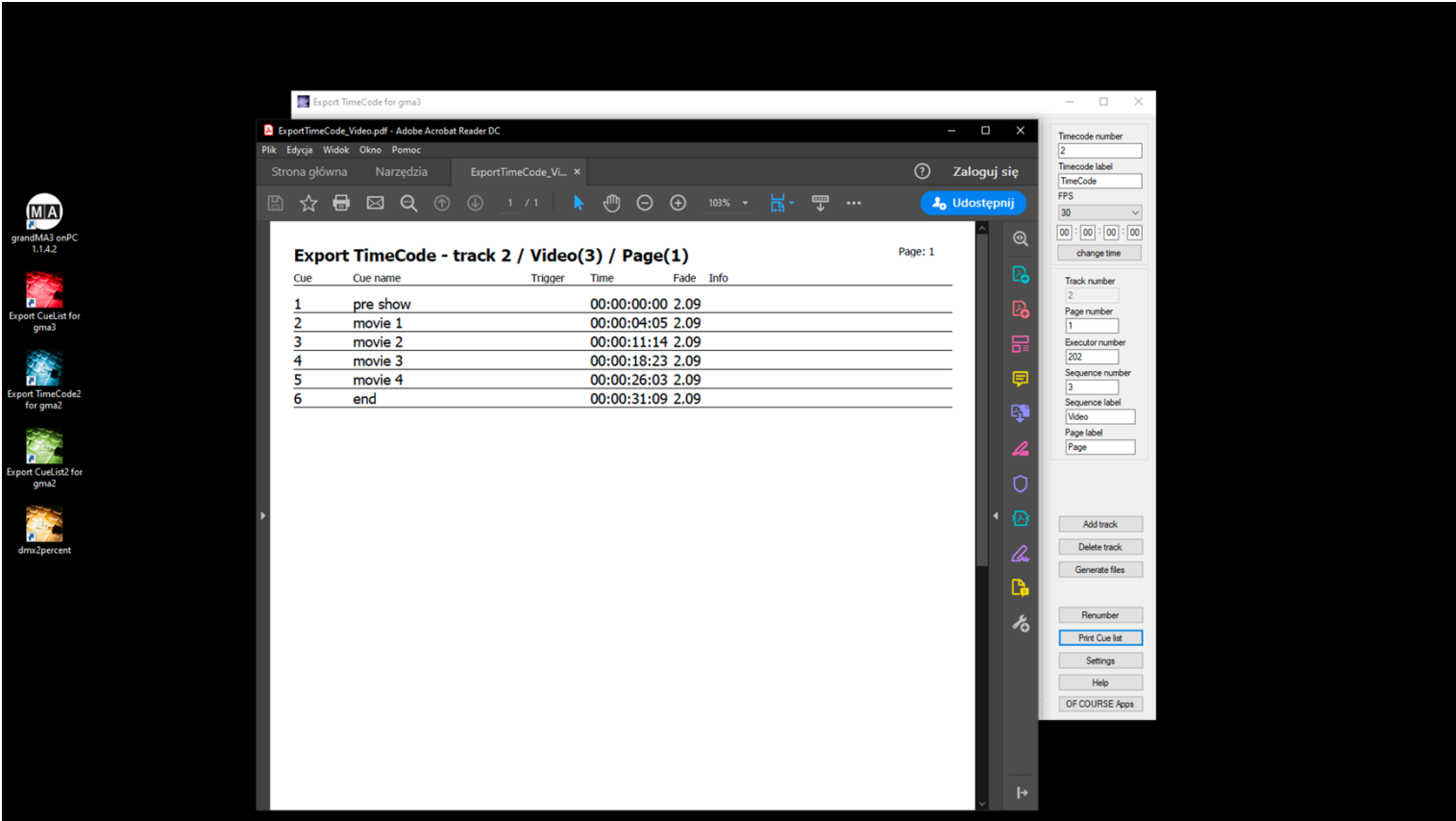
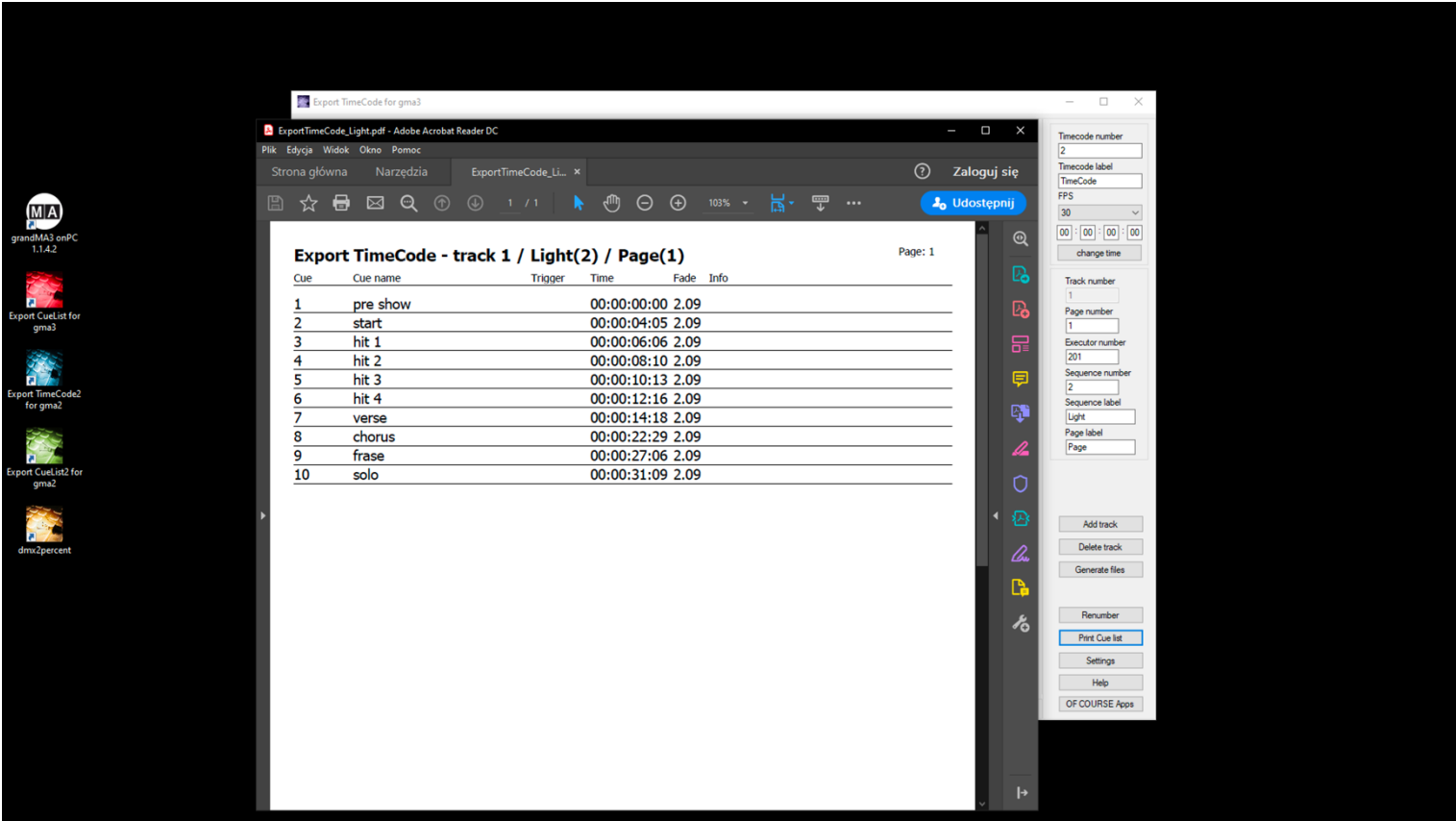
Now you can change the Name, Number, Fade for cues.

10. Do not forget to set, Executor number, Sequence number, Sequence label.





You can also print Cue Lists (Sequences).

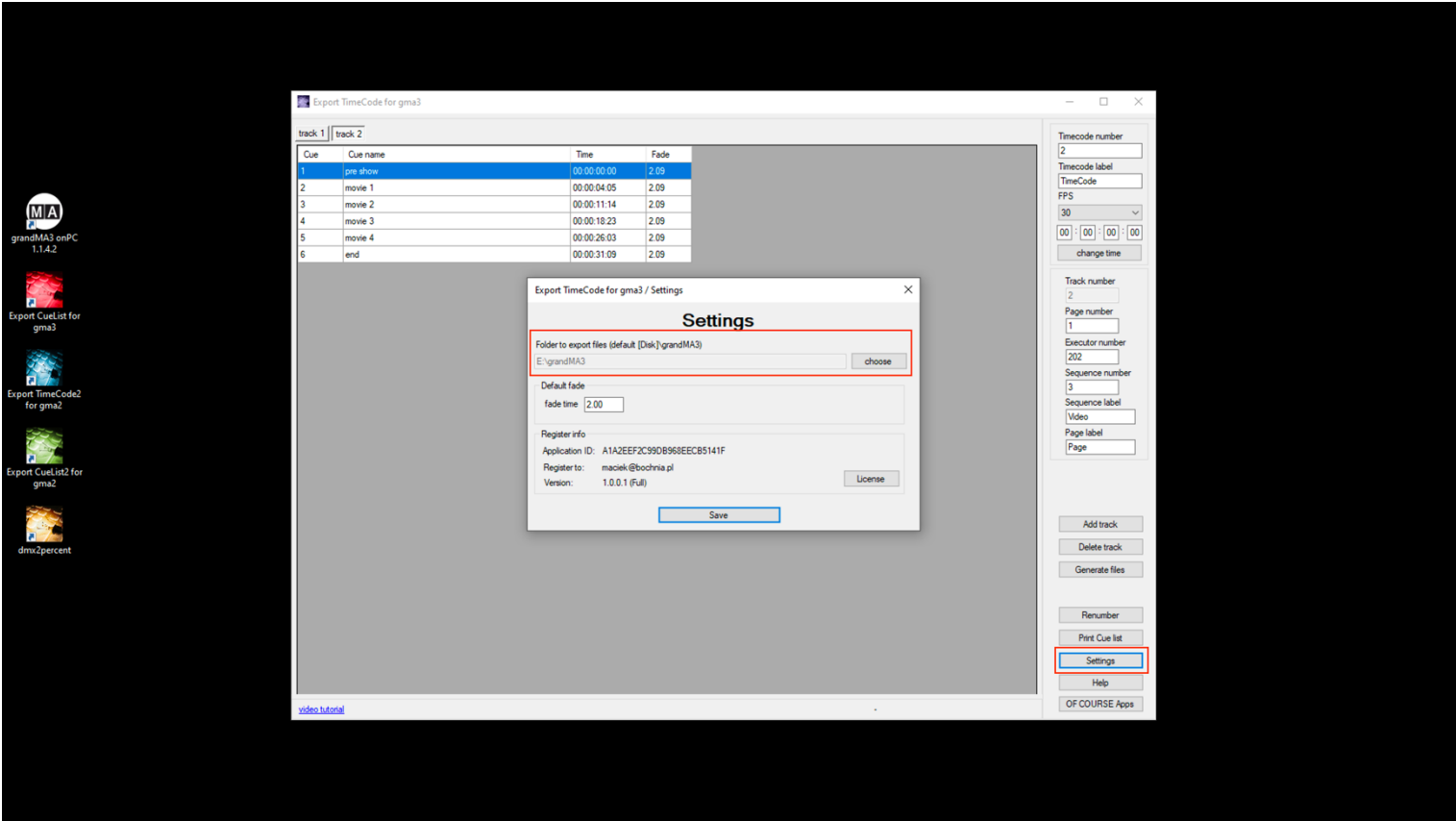


Finally, you have two ways how to export Cue List (Sequence) with Timecode to grandMA3.

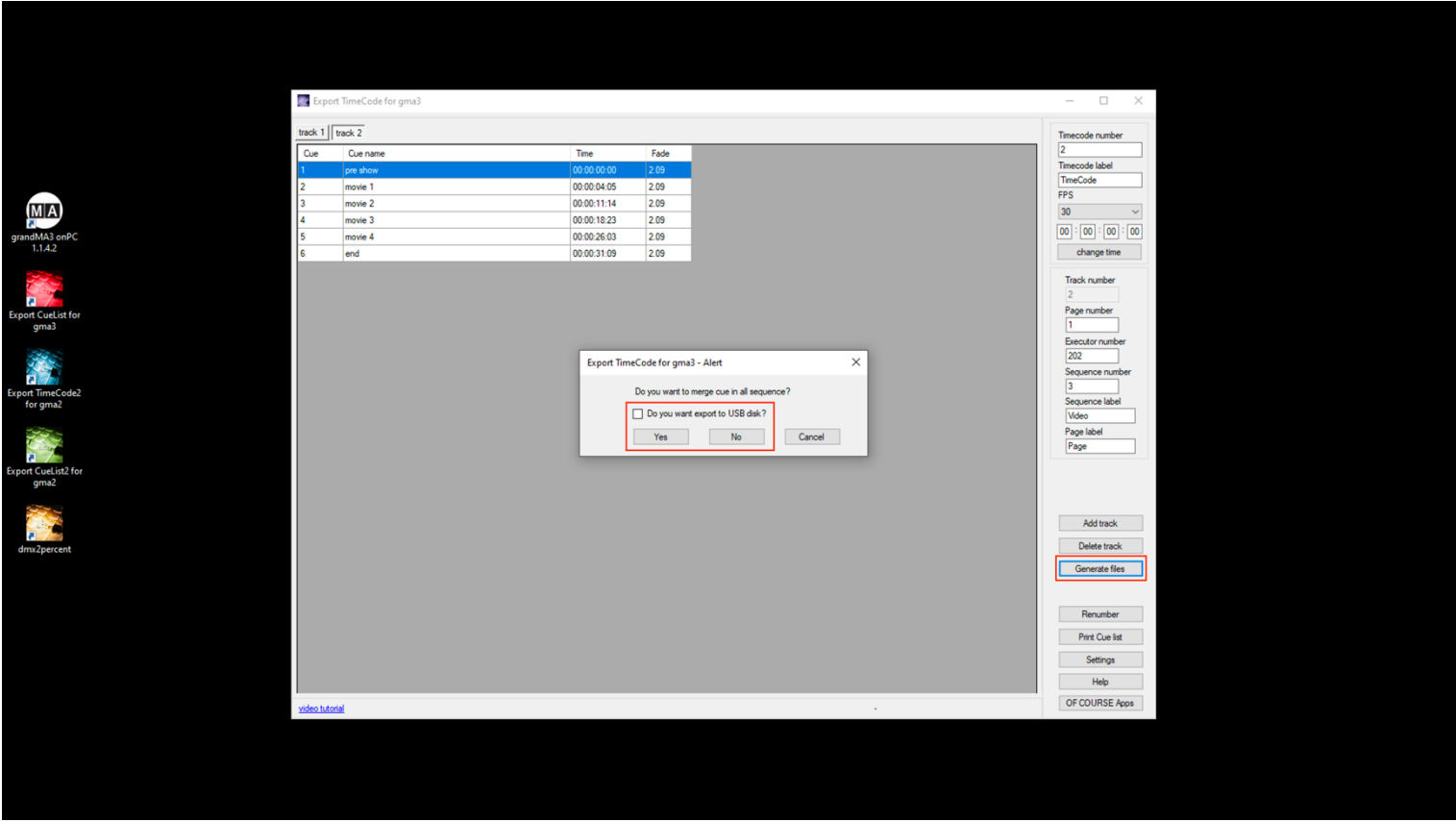
Run the show on grandMA3 onPC and connect to the computer with *Export TimeCode for gma3*. Or, run the show on grandMA3 onPC on the same computer

Click tab Settings.

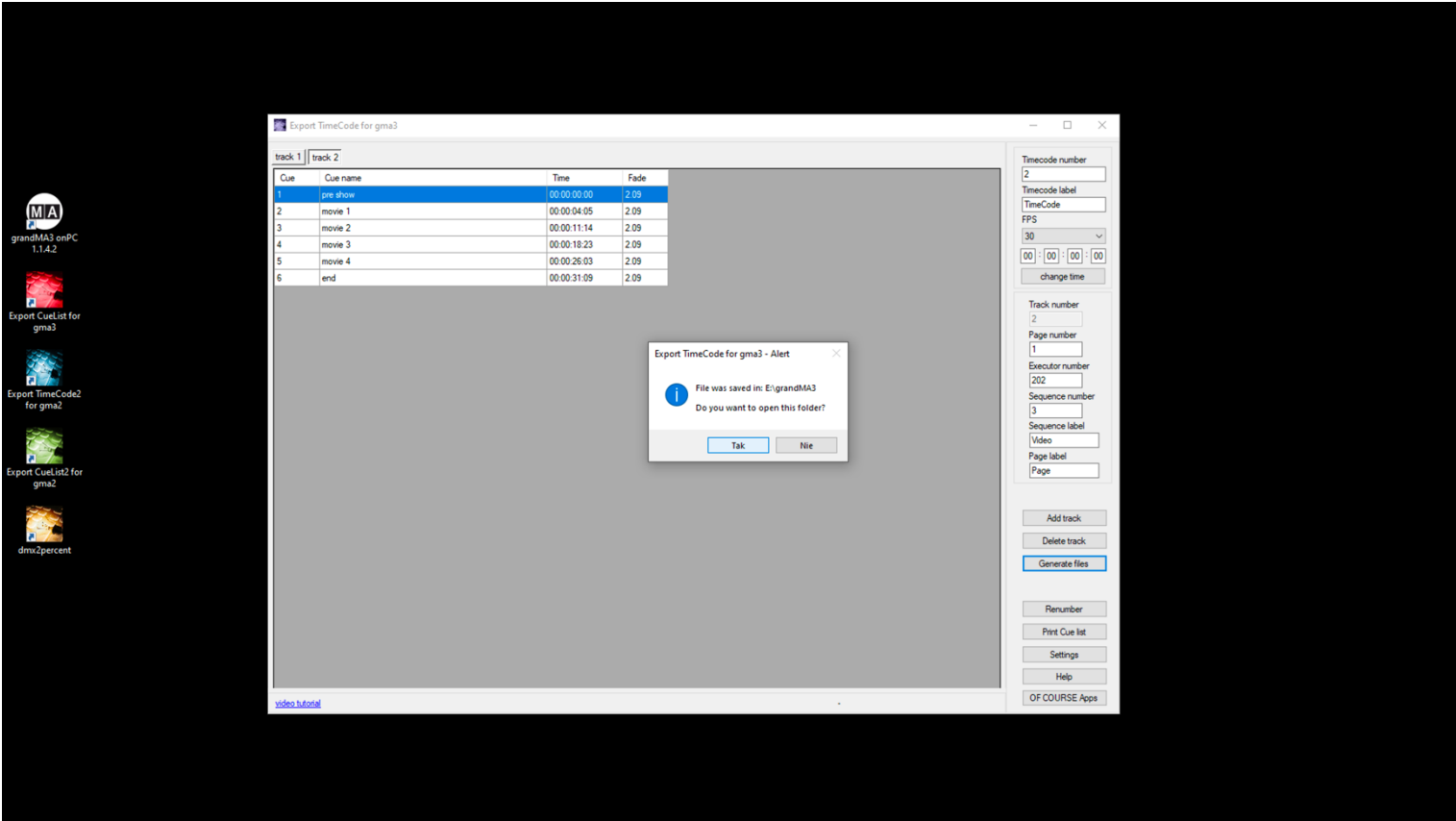
Set directories for Timecode and Macro – grandMA3 onPC Folders or USB Memory Stick Folders.



Click tab “Generate files”, and choose “Yes” if you want marge the cue and Timecode, or “No” if you import new timecode and sequence. Remember if you import from USB memory stick please select checkbox.



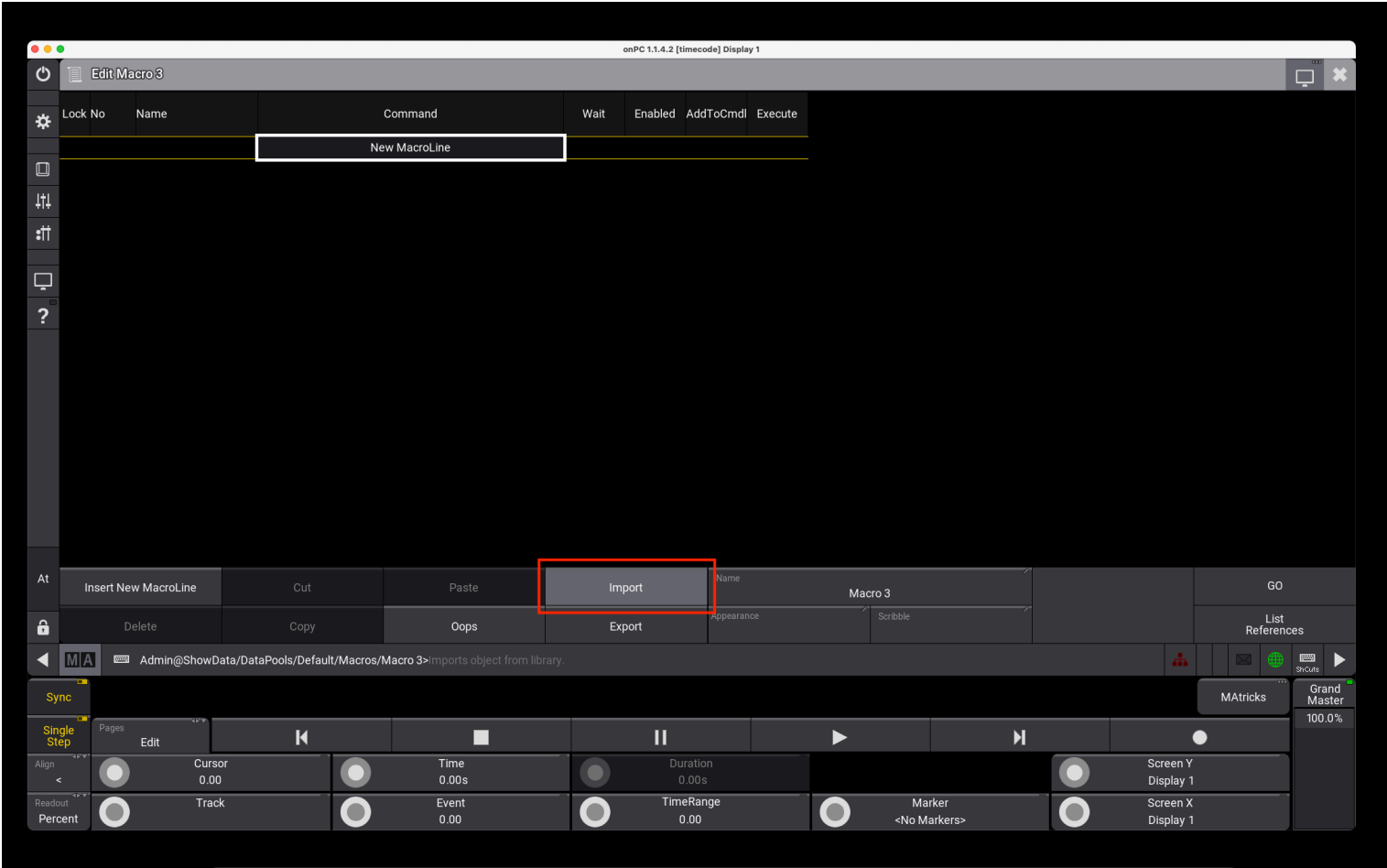
Your Cue Lists (Sequences) with Timecode selected Page, Executor, Fade is ready to be imported using a Macro from folder in grandMA3 onPC or from macro on USB Memory Stick!



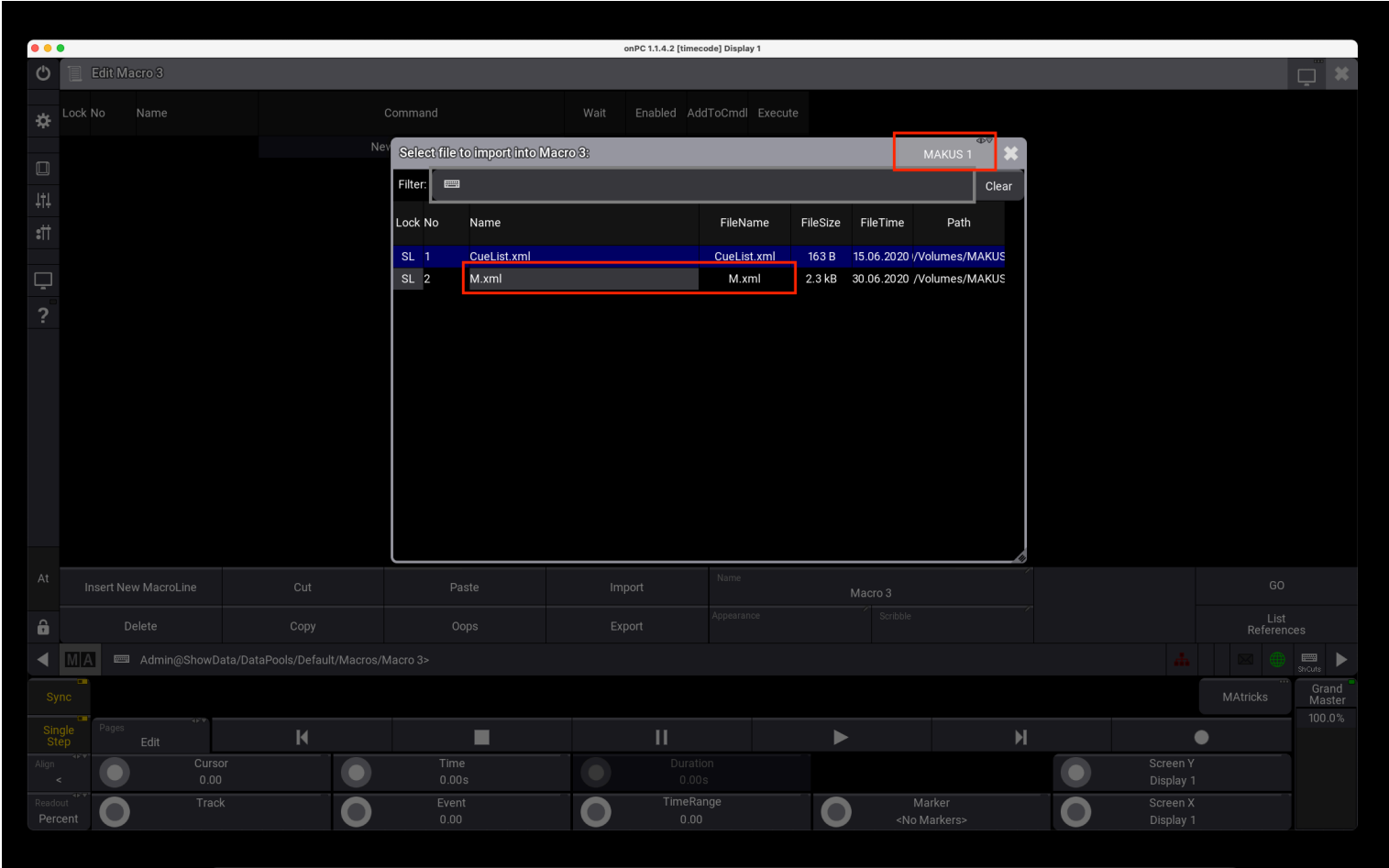
Run your show on grandMA3.



Create new macro, click Import

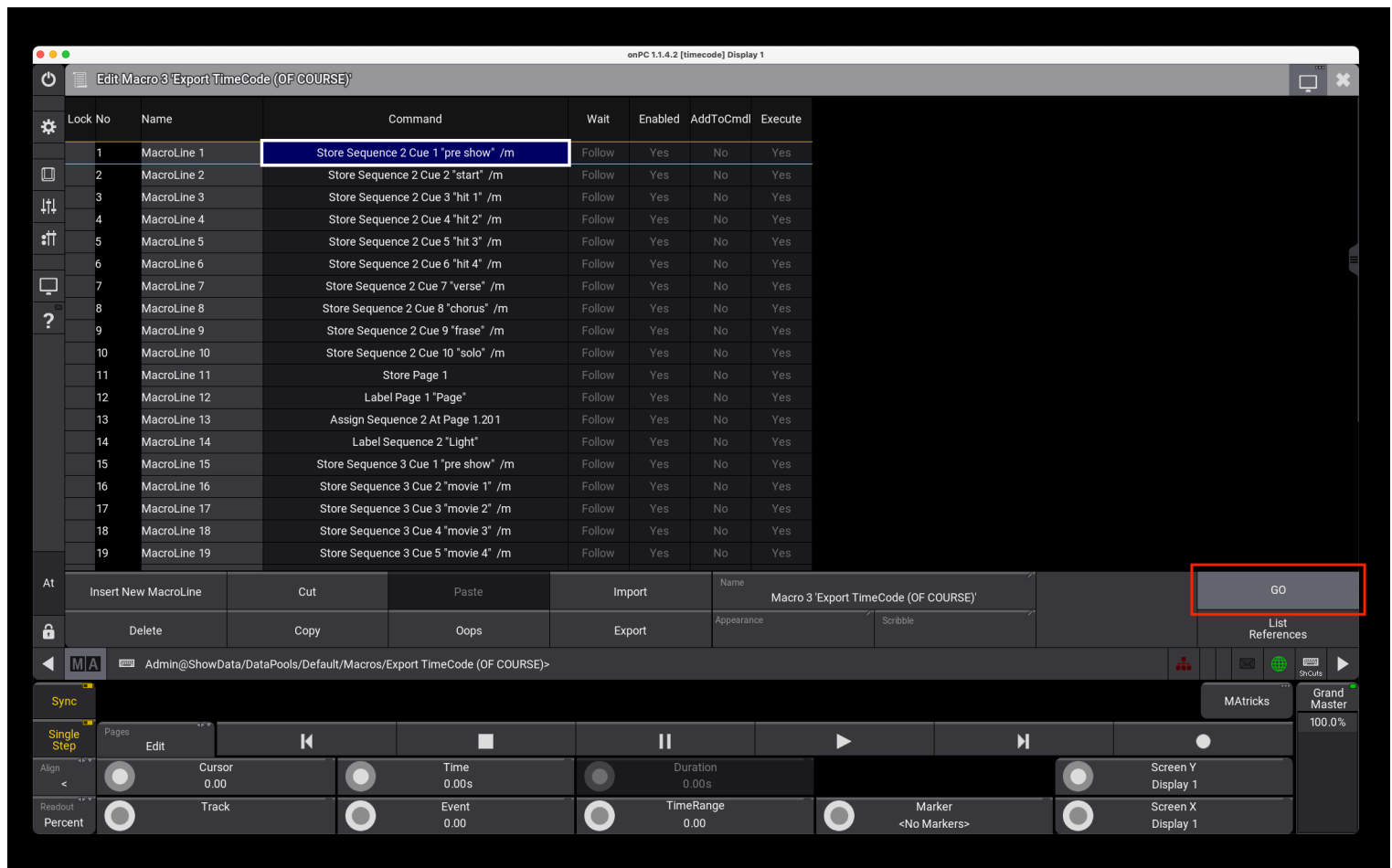


Choose correct disk (USB or local), and choose M.xml file.

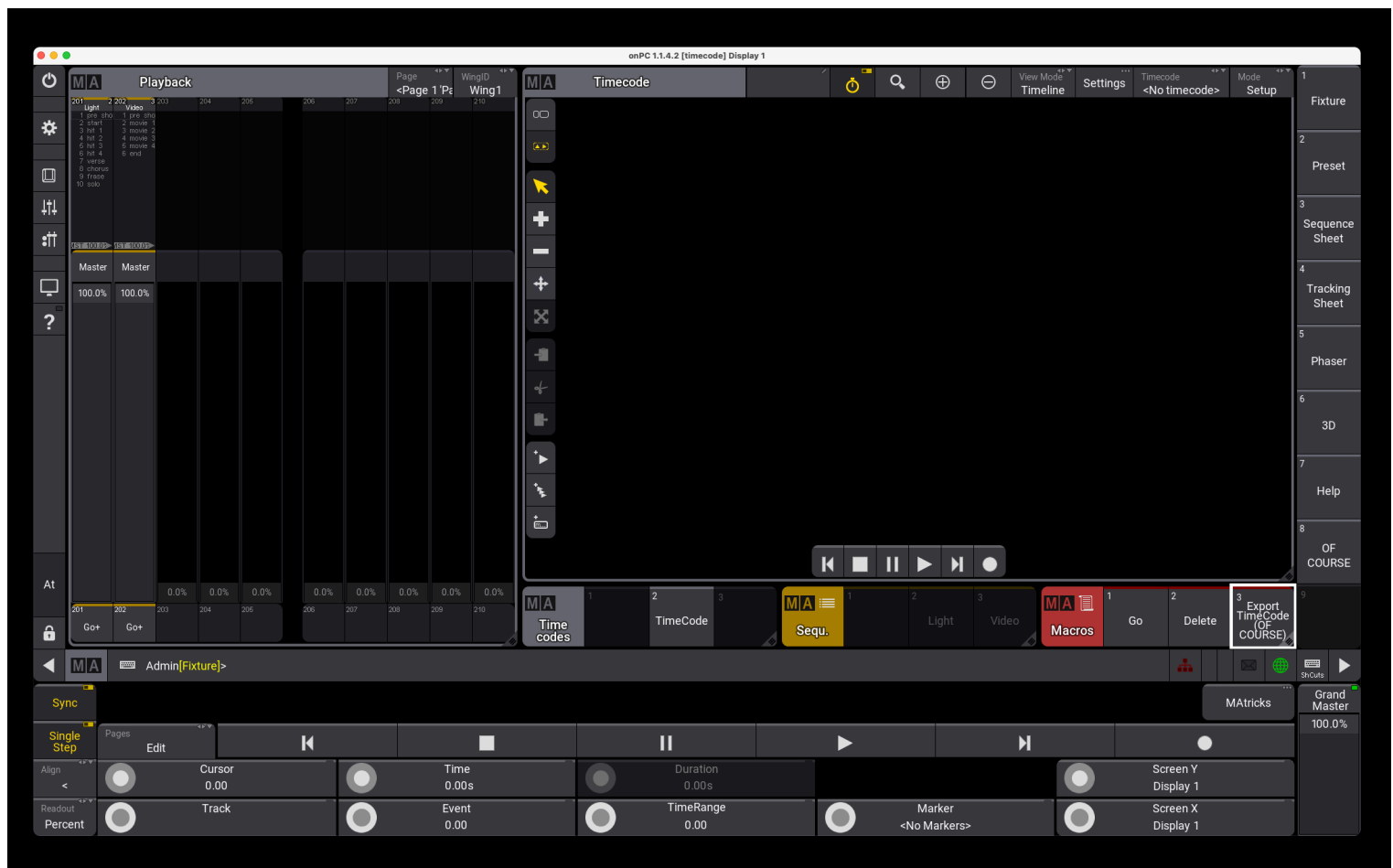


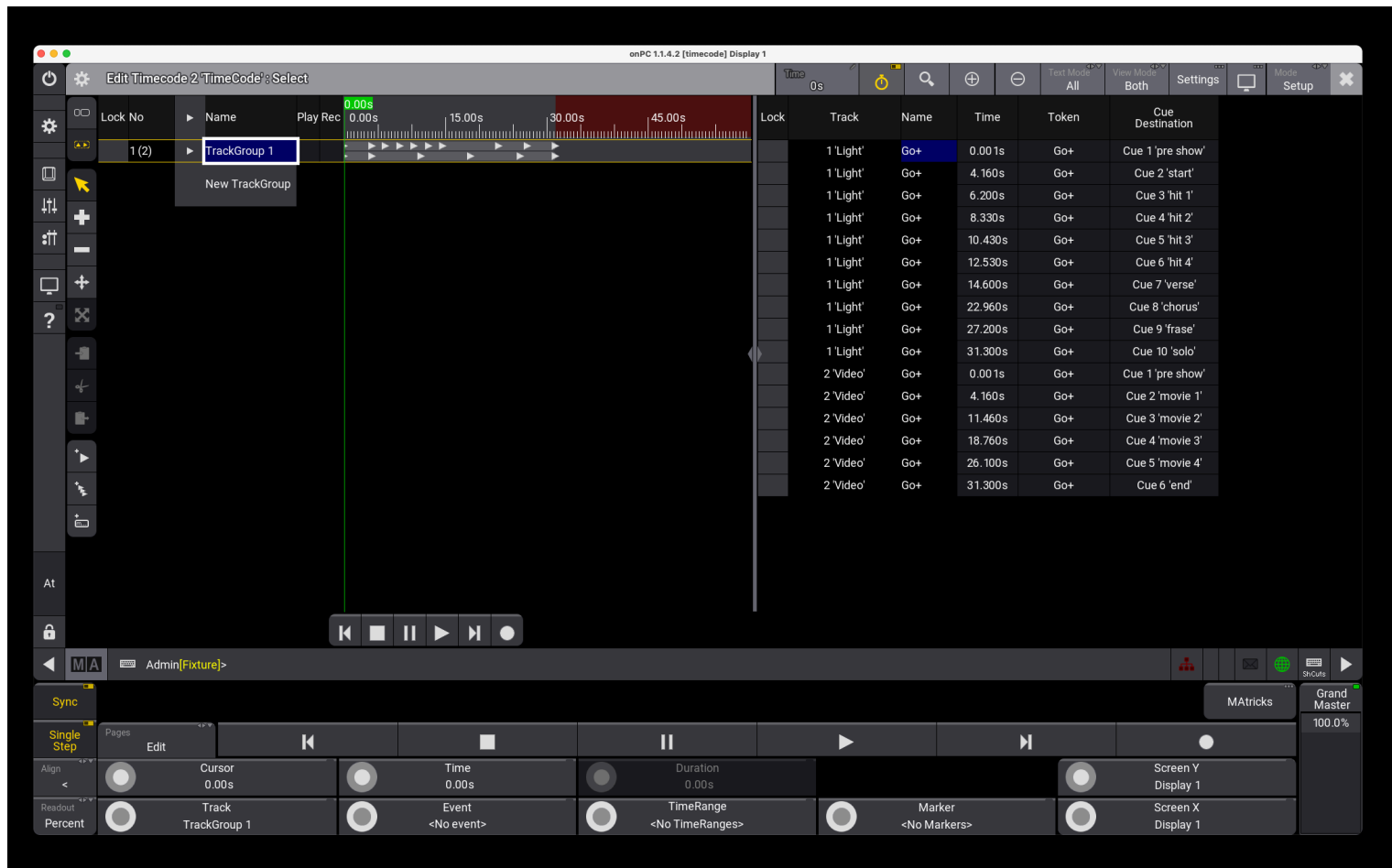


Now run this Macro.



**Your Cue Lists (Sequences) with Timecode selected Page, Executor, Fade is already in show on grandMA3!**



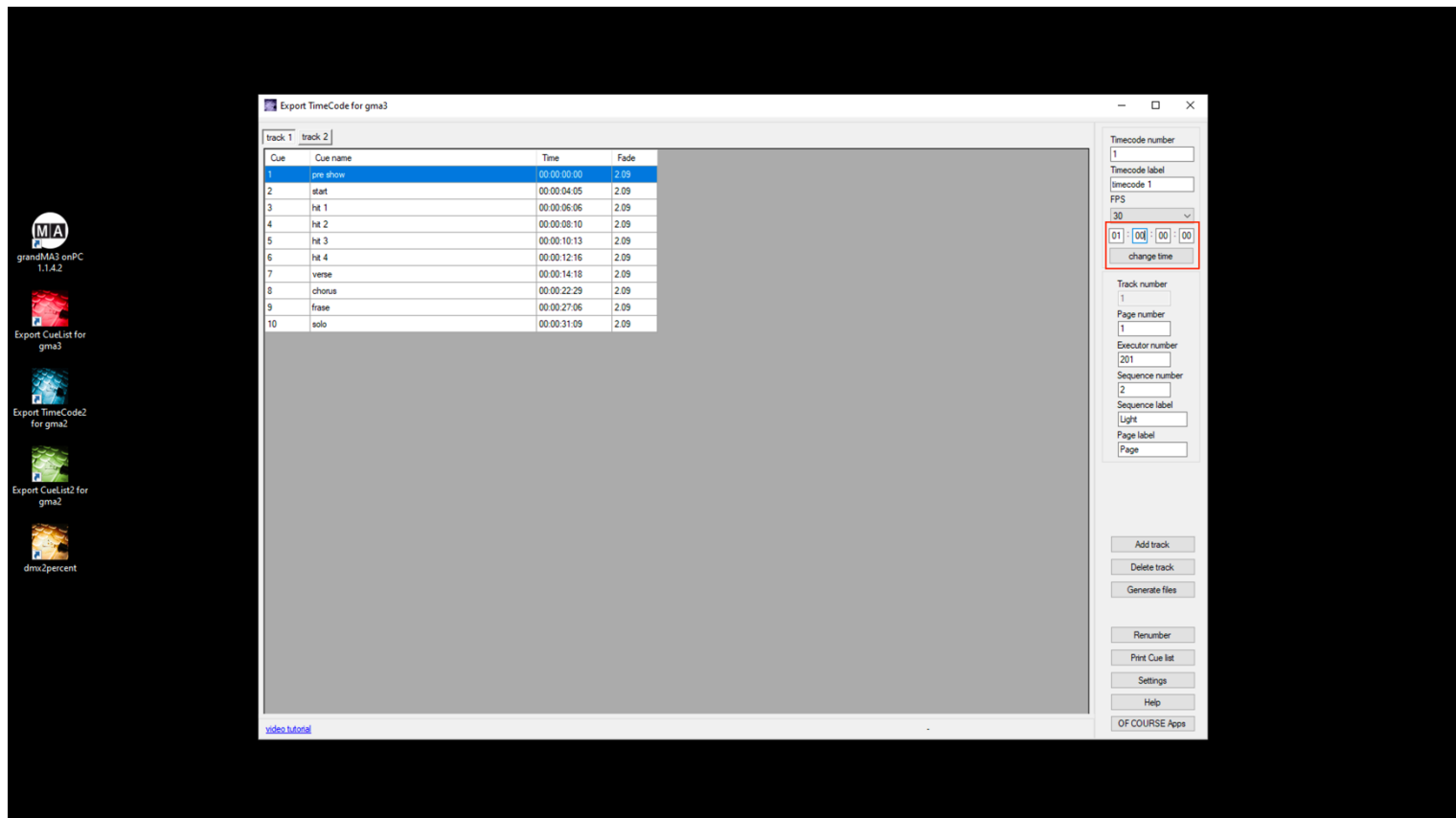


That's all! Simple and fast :-)

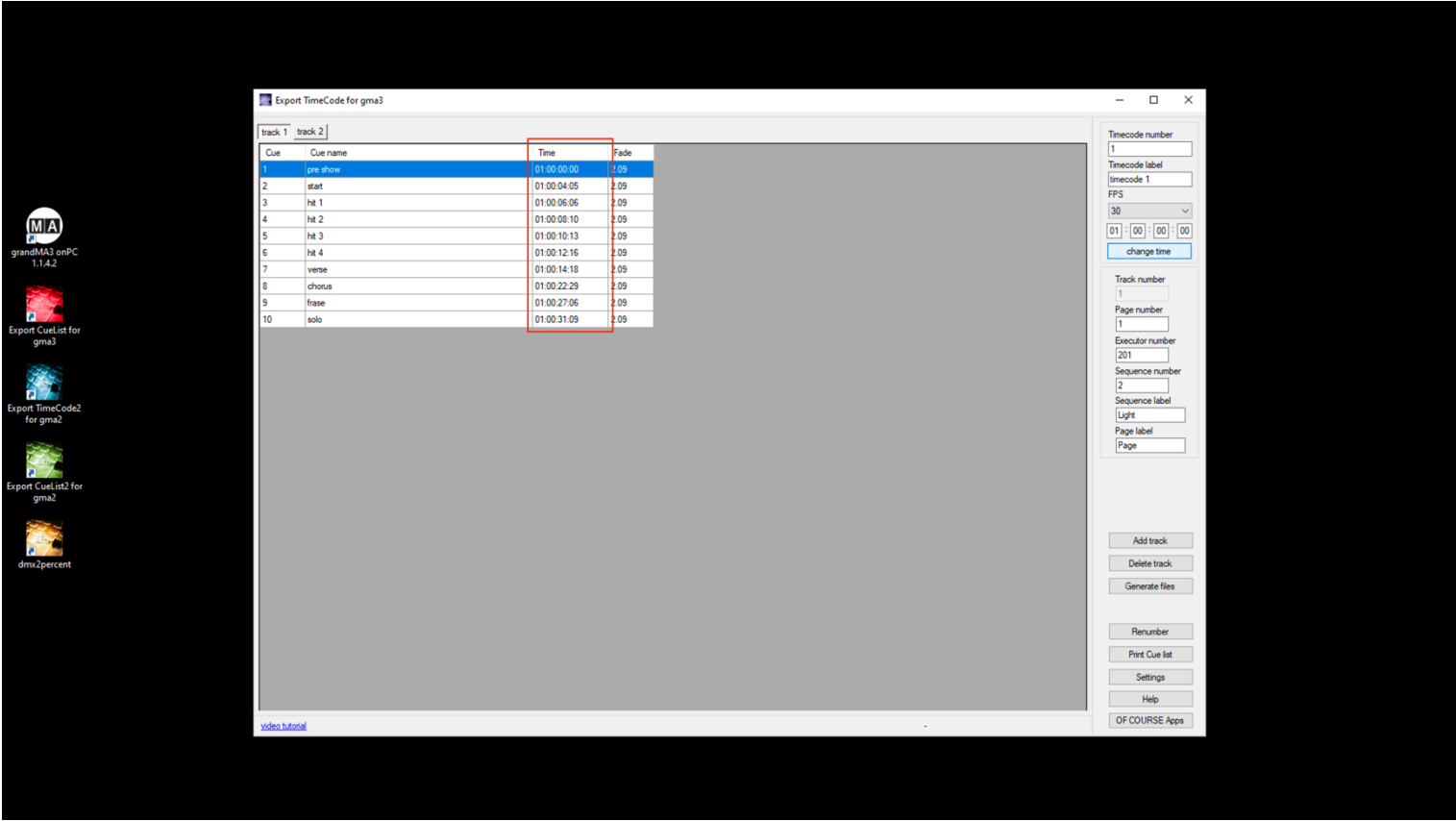
The application has several tools that will allow you to easily edit your cuelist.

1) Adding time.

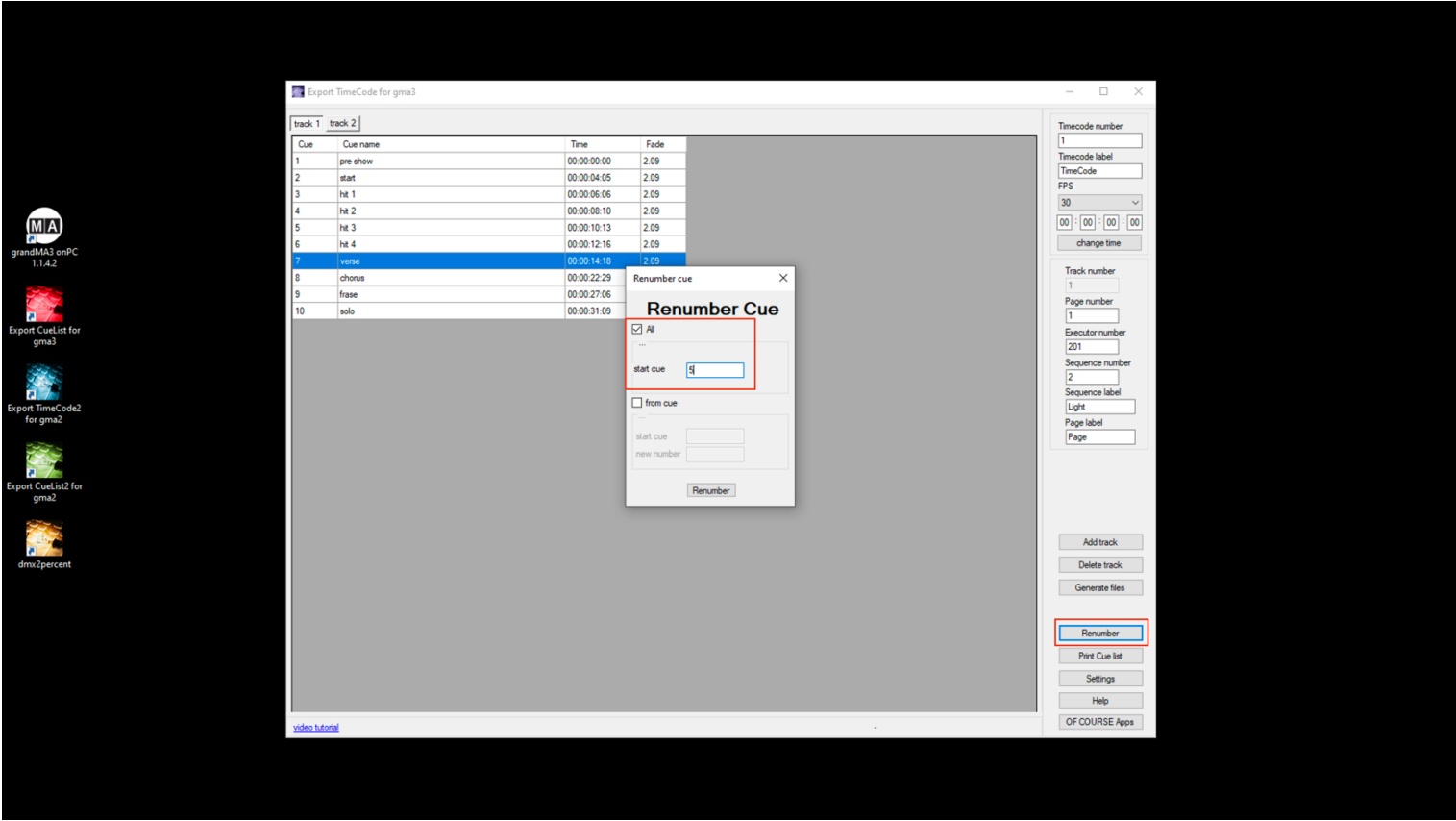
You can correct or add e.g. 1 hour or several minutes to your timecode.



And the result:



You can change the cue number using renumbering.



Export TimeCode for gma3

track 1 track 2

Cue	Cue name	Time	Fade
5	pre show	00:00:00:00	2.09
6	start	00:00:04:05	2.09
7	ht 1	00:00:06:06	2.09
8	ht 2	00:00:08:10	2.09
9	ht 3	00:00:10:13	2.09
10	ht 4	00:00:12:16	2.09
11	verse	00:00:14:18	2.09
12	chorus	00:00:22:29	2.09
13	frase	00:00:27:06	2.09
14	solo	00:00:31:09	2.09

Timecode number  
1  
Timecode label  
TimeCode  
FPS  
30  
00 : 00 : 00 : 00  
change time

Track number  
1  
Page number  
1  
Executor number  
201  
Sequence number  
2  
Sequence label  
Light  
Page label  
Page

Add track  
Delete track  
Generate files  
Renumber  
Print Cue list  
Settings  
Help  
OF COURSE Apps

video tutorial

Export TimeCode for gma3

track 1 track 2

Cue	Cue name	Time	Fade
1	pre show	00:00:00:00	2.09
2	start	00:00:04:05	2.09
3	ht 1	00:00:06:06	2.09
4	ht 2	00:00:08:10	2.09
5	ht 3	00:00:10:13	2.09
6	ht 4	00:00:12:16	2.09
7	verse	00:00:14:18	2.09
8	chorus	00:00:22:29	2.09
9	frase	00:00:27:06	2.09
10	solo	00:00:31:09	2.09

Timecode number  
1  
Timecode label  
TimeCode  
FPS  
30  
00 : 00 : 00 : 00  
change time

Track number  
1  
Page number  
1  
Executor number  
201  
Sequence number  
2  
Sequence label  
Light  
Page label  
Page

Add track  
Delete track  
Generate files  
Renumber  
Print Cue list  
Settings  
Help  
OF COURSE Apps

video tutorial

Renumber cue

Renumber Cue

☐ All

start cue

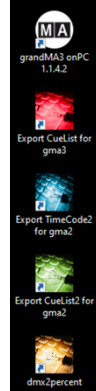
☒ from cue

start cue 5

new number 15

Renumber





Export TimeCode for gma3

track 1track 2

Cue	Cue name	Time	Fade
1	pre show	00:00:00:00	2.09
2	start	00:00:04:05	2.09
3	ht 1	00:00:06:06	2.09
4	ht 2	00:00:08:10	2.09
15	ht 3	00:00:10:13	2.09
16	ht 4	00:00:12:16	2.09
17	verse	00:00:14:18	2.09
18	chorus	00:00:22:29	2.09
19	frase	00:00:27:06	2.09
20	solo	00:00:31:09	2.09

Timecode number  
1

Timecode label

FPS  
30

00 : 00 : 00 : 00

change time

Track number  
1

Page number  
1

Executor number  
201

Sequence number  
2

Sequence label  
Light

Page label

Page

Add track

Delete track

Generate files

Renumber

Print Cue list

Settings

Help

OF COURSE Apps

[video tutorial](#)

Contact us:  
[support@ofcourse.com.pl](mailto:support@ofcourse.com.pl)

v.1.0.0.1